



Significant Bits

Journal of the Brisbug PC User Group Inc

Next meeting

Sunday 20th February

Vol 9 No 3

February 1994

\$ 4.00

Main Event

COMMUNICATIONS

BBS Demo and Line Sharers

Lunchtime Special

CADDSMAN demonstration

Inside

Dan Bridges on OS/2

Education News

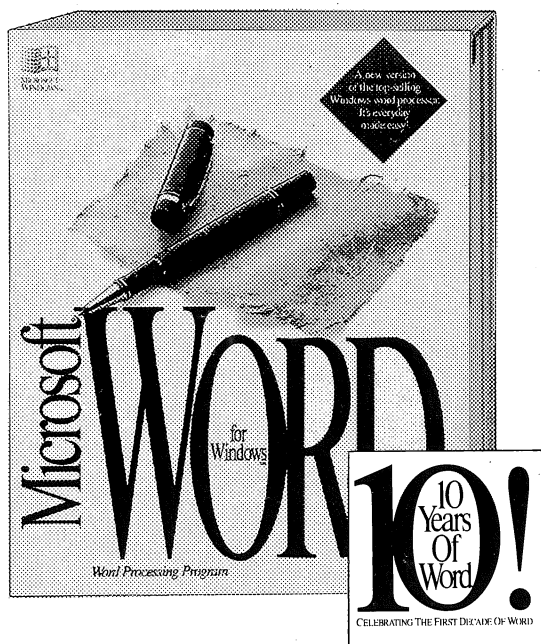
- a new COMMUNICATIONS class

Microsoft on DOS 6.2

Results of the Annual Elections

Annual Report Issue

Microsoft Windows. There's only one Word for it.



If you want to make the most of Microsoft® Windows™, use the world's leading Windows word processor, Microsoft Word.

You can move up to Word from your current word processor for just \$200* (RRP \$735). On-line help and the best conversion tools make the transition easy. To move up to Word for only \$200, call the Microsoft Sales Information Centre on (02) 870 2100.

For more information, complete the coupon and fax to (02) 317 4246, or mail to Microsoft Word, Reply Paid 31, Locked Bag 23, Mascot NSW 2020.

*Conditions apply. While stocks last.

Mr <input type="checkbox"/>	Mrs <input type="checkbox"/>	Ms <input type="checkbox"/>	Miss <input type="checkbox"/>	Other <input type="checkbox"/>	_____
Surname _____					
Given Name _____					
Title _____					
Company _____					
Street Address _____					
Suburb _____			Postcode _____		
Phone () _____					
Fax () _____					

WORDS B

Microsoft®
Making it easier

Contents

Significant Bits - Journal of Brisbug PC User Group Inc

Vol 9 Nos 3

February 1994

Features

- 18 MS-DOS 6.2
Reviewer's Guide**
Microsoft's "points-to - note" for professional reviewers of Version 6.2 See what you should look at when deciding whether to upgrade.
- 22 Dan Bridges' OS/2
Tips**
A recent convert to OS/2 looks at enhancing your OS/2 setup, including pop-up menus.
- 26 MS "ACCESS" -
Securing your
Application**
Running your ACCESS application on a network requires securing it. Microsoft Corp tells how.
- 33 ZOOMTEXT**
For the "visually challenged", a screen enlarger, reviewed by Phyllis O'Fearn.
- 34 An OS/2 User Tells**
Dan Bridges takes an overview of his new operating system
- 57 Educational
Software**
By agreement with Ramware, Brisbug can now sell their respected range of Educational Software

Club News

- 2** From the Engine Room *Lloyd Smith*
- 3** From the Assistant Stoker..... *Graeme Darroch*
- 4** Editorial..... *Ron Lewis*
- 6** BBS News..... *Paul Marwick*
- 8** SIG News..... *Dulcie Haydon*
- 10** Education News *Mark Mullins*
- 12** Minutes of the January Meeting *Chris Raisin*
- 14** The Workers' Xmas Party
- 16** Brisbug's Xmas Party
- 17** Christmas Raffle Winner
- 38** News of Associated Clubs *Ron Lewis*
- 40** Minutes of the Annual General Meeting *Chris Raisin*
- 52** Software Library News..... *Lloyd Smith*
- 53** Minutes of the December Meeting..... *Chris Raisin*
- 56** Volunteer Rewards Scheme By-Laws

Regular Features

- 41** Windows Watch *Ralph deVries*
- 46** The OS/2 Column *Paul Marwick*
- 50** Consultant's Notepad *Geoff Harrod*
- 58** New Library Listings
- 66** Help Lines

Brisbug recognises the generosity of our regular supporters:

Microsoft Corp	Cunningware
Borland International	Data Cabling
Electroboard	Accord Computer Eng
HH & BW Services	Mannacom
Ron Lewis Computers	Ramware

and the sterling job done by Marlin Printers of Caloundra.

BRISBUG PC USER GROUP INC

*The Brisbane group for users of
PC-type computers.*

PO Box 985 Toowong, Qld 4066

Info line 2015005

Membership only:

PO Box 5000 BRASSALL 4305

Tel: 2015005

President

Lloyd Smith 281-6503

Vice President

Graeme Darroch 2091999

Treasurer

Max Kunzelmann 281-2759

General Secretary

Chris Raisin 379-1415

Membership Secretary

Jan Ausburn 201-5005

SIG Director

Dulcie Haydon 273-7393

Education Director

Mark Mullins 841-4623

Magazine director

Ron Lewis 273-8946

Development Co-ordinator

Carl Planting 899-0770

BULLETIN BOARD SERVICE

Chair/Sysop

Paul Marwick

Assistant

Graeme Darroch 209-1999

BBS phones: (07) 871-0304,
871-0298, 870-2972, 870-0653

Management BBS 209-4980

SOFTWARE LIBRARY SERVICE AND SHOP

Post Prepaid requests to:
Brisbug Software Library,
95 South Station Road,
Booval 4304

or phone: (07)281-6503
MONDAY-FRIDAY, 9am to 1
and 2 to 4pm ONLY!!

HELP LINES

Brisbug operates a system of
help lines for members only.
The telephone numbers for each
topic are listed at the back of
this magazine

From the Engine Room

Lloyd Smith

The Election results

1994 is already up and running - our AGM, last month, was rather poorly attended, but what are AGM's for but to avoid. The elections, if you can really call them elections, were more or less a fore-gone conclusion. There were 9 positions called for the 1994 committee and there were 9 nominations.

The new committee for 1994 is:

President	Lloyd Smith
Vice President	Graeme Darroch
Secretary	Chris Raisin
Treasurer	Max Kunzelmann
Membership Secretary	Jan Ausburn
Development Director	Carl Planting
Education Director	Mark Mullins
Magazine Director	Ron Lewis
SIG Director	Dulcie Haydon

PC94 planning

Planning is already underway for a busy year - Graeme Darroch will be calling for volunteers to assist with PC94 to be held in May. PC94 in Brisbane will follow the pattern of the "PC" shows in Sydney and Melbourne and will be a tremendous showcase for Brisbug. Also we will be continuing our involvement

with the Computer Expo in late September - early October.

The HUGE membership drive

Subject to finalisation of arrangements for prizes, we will shortly be conducting a membership drive to attract more members to Brisbug. Major prizes for both the lucky new member and the Brisbug member who introduced them to our ranks will be the main feature of this drive. More on this in our next issue.

Volunteering

Dan Bridges' "Open Letter to members" in our last issue caused various members to think about their involvement with Brisbug. There has been a response from some members who felt that would be able to help in some way. Some have offered their services at meetings (though usually they tend to drift away unless the job really enthuses them) others would like to help but they live too far away and can't get to every meeting and then there are those who volunteer their services and sit back waiting for someone to come and show them how to do the job.

Continued on page 17

Vale Kirk McPherson

On behalf of the committee and members of Brisbug, I would express our sincere condolences to member Neil McPherson and family for the tragic loss, in a motor accident, of their son, Kirk.

A foundation member, Kirk was the popular and well-known Treasurer of our Gold Coast SIG, and often lectured for them.

Lloyd Smith - President

From the Assistant Stoker

Graeme Darroch

This month I would like to share news of a new resource that Brisbug has available for its members, the Brisbug MIS (Management Information System) BBS.

This system is available on (07) 209 4980 and is a FidoNet system with a node number of 3:640/829.

The uses this BBS will be put to are mainly information exchange (as the name implies), and a place for non-members to find out something about Brisbug.

To cater for this I, (as Sysop), have created an Information section in which is listed all the meeting dates that have been booked into the future, the people who will be presenting, and the subject of the presentation. Other information for the non-members what can be expected from a Brisbug Sunday, what the Objects Of Brisbug are, and of course the Brisbug story. In addition the file lists for the other Brisbug BBS are carried and updated regularly.

This BBS will carry the latest virus Scanning/detection software, but this leads on to another point that is worth mentioning, this BBS is not designed to be a file depository, which means don't log on here looking for 1 Gb of files on line, you won't find it. The BBS will carry some files, but those files it does carry, will be carefully selected.

One area that has been created is a SIGBITS FEATURED PROGRAMS area, this area has been set aside to carry programs which are featured in the last one or two issues of SIGBITS. This should make it a bit easier to find these files, instead of being in amongst the mammoth number of files on our other 4 BBS's.

SIGBITS articles can be uploaded to the Magazine area, on the MIS board, and the Editor will collect these for inclusion in the next Magazine. This file area is an Upload only area, only the Editor may Download these files.

Areas have been set aside for members to communicate with the Committee. If you have a message you would like to send to the committee please save it as a text file, in ASCII format and upload it to the Committee File area. In this area only Committee members are allowed to download files. Similarly there are areas provided for Sig Co-ordinators and an area to leave files for pickup by our associated clubs. I'm hoping that we can get some of our associated clubs to become part of a new message system that we are picking up. Messages are sent to and from Sydney, Melbourne, Canberra PCUG's and these message areas are available for any associated clubs, and their contribution to these areas are actively sought. Any associated clubs can start to exchange these message areas simply by getting in touch with me. These areas are called UG_Members, for members, UG_Directors, for Committeemen, and UG_Sysops for Sysops only.

So I invite you to log-on, have a look around, leave a message or two, and enjoy using the BBS.

The BBS is run using the MAXIMUS program, so if you have bought my book on BBSing this applies to this BBS exactly the same as our other four BBS lines. If you are new to BBSing try a log-on this BBS is by its nature going to be quieter than our other BBS's.

BRISBUG MIS BBS
(07) 209 4980 Fido 3:630/829

MAGAZINE

Editor
Ron Lewis 273-8946

Associate Editor
Geoff Harrod 378-8534

Reviews Editor
Ash Nallawalla

Layout Design
Belinda Gorrie

Contributions always welcome!
Disks, artwork or copy to:
Ron Lewis, 12 Firelight St,
SUNNYBANK HILLS 4109

Artwork Separations: Queensland Business Magazines

Printer: MARLIN PRINTING
37 Caloundra Rd. Caloundra
(074) 915-833

Copyright

Material in this magazine may usually be copied by PC User Groups without fee. This is provided that the copyright rests with the Brisbug PC User Group Inc., so please check with us first to avoid possible infringement.

This permission is also on condition that the copy is not used for commercial advantage and that the origin of the material and this permission to copy are acknowledged in the reprinted item.

Liability

Although it is policy to check all published material for accuracy and usefulness as far as possible, no warranty is offered against any loss resulting from the use of any material in this magazine.

All content reflects the opinions and experience of the author and does not necessarily reflect the policy of the Brisbug PC User Group Inc.

Most hardware, software and products mentioned are registered names and trademarks of the vendors or makers concerned. Brisbug will not be held responsible for claims made by advertisers, and advertisers are not to be bound by errors and omissions in publication.

ADVERTISING

The rates, sizes and other information needed by advertisers is set out below. Significant Bits will take color or black and white ads. Position must be requested. Advertiser printed inserts can also be arranged.

DEADLINES

Normal deadlines are the third Friday of the month preceding publication. Space reservation deadline: 3rd Friday of month preceding publication.

Replacement artwork deadline the last Friday of that month. Artwork must accompany space booking. If booked by phone or FAX, booking becomes effective only when artwork is received. The magazine is usually printed the second week of the month of publication, so that changes to copy must be in the preceding week.

TERMS

Payment must accompany bookings unless an account has been established. Discounts are offered for multiple insertions when advance payment is made.

Members may advertise at half rate, but member payment must accompany ads (Classified ads not exceeding three lines are run free of charge. More than three lines attract a minimum charge of \$5.)

FORMAT

The magazine is A4 size, offset printed and saddle stitched. More than 2300 copies are printed of each issue and distributed throughout Australia and overseas. Artwork should be full size, paper bromide, film (right-reading emulsion down) or laser print. Postscript print or EPS files can be accepted by arrangement via modem. Brisbug does not typeset ads other than classifieds.

Text only ads 1/6 or 1/12 page can be FAXED. The layout for these must be at the editor's discretion and are accepted without proofs. All sizes are given as height x width in mm. Artwork must not exceed stated sizes.

Editorial

A Question of Usefulness.

Ron Lewis

Last year, the membership of Brisbug increased by only 200, our lowest total increase since about 1987, and probably our lowest percentage increase ever. This prompts the question, has Brisbug, in its present form, outlived its usefulness.

Despite economic strictures, there is little doubt that the ranks of new computer owners continued to grow in 1993, creating a "market" for our services of computer education and mutual self-help. One has to ask two questions:

How well did we make ourselves known to potential members?

How relevant were our services to the needs of computer users?

A third question:

How well did we go retaining our existing members, and why did those who left, go?

also is currently unanswered.

(There was one notable exception to the flat-liner year... the Junior Group. Under Les's guidance, and with assistance from a number of people whose names would probably be unfamiliar to the majority of members, the Junior Group has prospered to the point where one-third of members at the December meeting were, at one time, in the JG meeting. The lessons from this have not been lost on the management team)

There is no doubt 1993 was a challenging year for Brisbug management...tight economic times, a loss of our long-time "home" at Bardon, and a number of changes on committee to unsettle the management team. That does not excuse the team, particularly those whose duties were relevant to these questions, from criticism for failure to institute investigations to provide the answers, and take remedial action.

But why is growth important... or is it even necessary? Any organisation with a steady (or decreasing) membership is surely stagnating. Even if a conscious decision has been taken not to grow, it is, in my opinion, a sign of malaise, an admission of an inability, or unwillingness, to confront the challenges of managing a healthy growing "infant".

I know the current president shares my philosophical view that I call the "P&C syndrome". Many volunteer organisations draw their funding from a narrow base, and keep flogging that base till it eventually dries up. My view is that if you need more funds, then you should go outside your membership and flog a much more affluent "horse". The problem is that to do this, you have to be able to convince the owners of that horse that you are a worthwhile investment... there is no such thing as charity in business, and in any case, it's demeaning to beg!

So what we have to be able to offer potential supporters and sponsors is a lively, credible audience for the messages they are trying to propagate.

Also, if we are to represent the opinions of our members to "outside" organisations such as suppliers and governments, then size is a major element in being listened to (to politicians, numbers are god). So too is a healthy growth pattern, since business equates growth with good management. To the volunteers who manage Brisbug, being responsible for (or should that be "to be to blame for") a vibrant, successful, organisation is the major reward.

Size also gives us the financial muscle to hire good facilities (and utilise them efficiently) and attract quality speakers for our meetings. Meeting Coordinator Graeme will confirm that significant players in the PC industry are



**Deadlines are an editor's
worst nightmare**

very interested when informed we can offer them a live audience of about 350.

But eventually, growth success comes back to offering individual members services sufficient, in their own particular context, to justify to them their cost of membership. We need to recognise that, as members' experience and knowledge of PC's increases, their needs and wants from their computer club will change. At the moment, we have no method, other than informal discussions, anecdote, and individual perceptions, of establishing what members want.

With the newly elected Development Director having the management skills and willingness to put in the effort, the question of members' requirements will be shortly the subject of detailed investigation. Every member will be invited to participate, and we hope to be able to offer some material inducements (read "prizes") for those who make the effort to help. I hope you will all get involved in determining the near-term and longer term directions of Brisbug.

The Rewards Scheme

Brisbug would not function without the selfless service of a number of members who work in areas like the Library and Software Shop. President Lloyd has instituted a Rewards scheme, using software donated to Brisbug as "thank-yous" for those nominated for outstanding contributions.

Full details of the scheme, and how you can nominate your favourite worker for recognition, are on page 56



Some of the Library crew are pictured at the December meeting

ADVERTISING DETAILS (cont'd)

FULL PAGE SIZE DETAILS

Normal article text (3 col)
260x178
Page trim
295x208
Max assured print area
280x190
Optional bleed extent
300x215

RATES

Color covers	\$600
Doublepage spreads ..	\$500
Colour page	\$450
Colour 1/2 page	\$250
Colour 1 column	\$110
Colour 1/12 page	\$50
Centrefold spread	\$525
Full page	\$275
2/3 page	\$175
1/2 page	\$160
1 column	\$110
1/4 page	\$70
1/6 page	\$50
1/12 page	\$25

Special positions:

Full page RH side,	
1st 20 pages	\$285
Inside covers,	
B&W.....	\$350

INSERTS

Inserts are subject to prior arrangement.

The charge is 1.5 time the full page rate. The inserts may be color and double-sided and may be in foldout or booklet form, but may not exceed A4 size.

To meet Post Office requirements, they must have been printed in Australia or New Zealand.

The required quantity of printed inserts are to be delivered to Significant Bits.

Quantity, delivery and other details will be advised on request.

Advertisers may contact Ron Lewis (07)273-8946, FAX (07)273-8954.

***We welcome your
decision to support your
club by advertising in
the magazine.***

BBS News

Paul Marwick

Disk space is, once again, becoming a problem... with two solutions:

1) Automated file management

2) Removal of duplicates.

Disk space is, once again, becoming a problem. While a gigabyte of hard drive space seemed like a lot of disk space a few months ago, it is beginning to require a fair bit of checking to ensure that sufficient space remains for processing purposes.

While it would be nice to be able to go out and add some more disk space, there are other things which, in my opinion, are more important at present (such as getting the Brisbug machine networked to my machine, as well as upgrading some of the modems being used on the systems). As a result, it is now becoming necessary to start keeping a close track on files that are on the systems.

Automated file management

I have two approaches to this problem. First, there is a new, automated file management tool being run on the systems. This is FileMinder (a 32-bit OS/2 application written by Graham Stair from 3M in Sydney). FM keeps track of downloads, and can be set to remove files which have not been downloaded over a set period. I've been beta testing FM for a number of months. Now that it has sufficient history built up, I have started using it to remove files which have not been downloaded over a period of 90 days or more. This should help substantially when it comes to preserving disk space.

In the past, I've had to prune files on the basis of how old they are. While download counters give some indication of how popular a file is, they don't provide any real indication of whether that popularity is current or historic. There is no real way of telling, even if a file has been downloaded many times, whether those downloads took place in the recent past or whether they took place shortly after the file became available. FM provides a method of tracking current popularity of files, and allows much better control of file area sizes without the problem of removing a file simply because it is more than 12 months old.

My plan is to have FM move files to a holding area, where they can then be backed up to tapes for possible inclusion in the Software Library. How long this may take is anyone's guess, since the Library has more than enough work to do anyway, and there is currently no easy way to get files to the Library

once they're on tape. This problem is under examination at the moment. For the moment at least, I'll provide the Library with a list of the files that have been removed from the system, so that they can pick out any items that they need.

Manual removal of duplicates

The second line of attack aimed at preserving adequate levels of disk space is going to require some outside help. At the last meeting, I asked for volunteers to do some work on the BBS for me. So far, I've had a number of responses. However, I'm still looking for a few more people to help in this area, so I'll reproduce the sheet that I gave to volunteers at the meeting here. If you are interested in helping, please leave a message on the system, or ring me on 871-0611 during business hours.

The job that needs to be done is to help remove duplicate files, make sure that multiple versions of files are not on the system and help ensure that files are in the appropriate areas.

Duties:

Download (preferably at least once a week) the master file listings from one physical system or the other. Go through those listings looking for

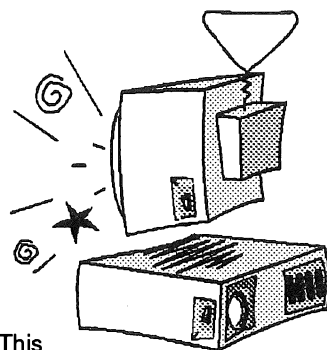
- 1 Duplicate files,
- 2 Multiple versions of the same program
- 3 Files which are in inappropriate areas.

Upload listings of files found in the search above to the same physical system that they came from, with the following information:

In the case of multiple versions of the same file, the versions found, file dates, and the areas that they were found in.

In the case of duplicates, filenames, file dates and the areas that they were found in.

In the case of files in inappropriate areas, the filename and area that the file was found in, plus the area that YOU think they should be in. In some instances, this may involve downloading the file to check that the description with the file is correct.



Suggestions for NEW file areas ??

In addition, I am interested in getting suggestions for new file areas. As the nature of files coming onto the system changes, there is obviously a need to change the areas in which they are kept. Apart from files which have accidentally gone into the wrong areas, there are also probably a number of files which are in inappropriate areas simply because appropriate areas don't exist for them.

Any final decisions on new file areas rest with me, but I'm interested in suggestions as to new areas which might be useful.

There are a number of areas where duplication of files currently exists. In particular, there is quite a bit of duplication of files between the two BBS machines. Until the network goes in, a good deal of duplication will have to remain. However, there are also a number of unintentional duplications, where I've accidentally moved files to the wrong area, or where later versions have arrived and I've not removed the older versions. I'm interested in being able to weed out this type of duplication in an effort to make more useful disk space available.

Rewards:

Lots of hard work, with very little thanks. This job requires people who are prepared to go through a repetitive and generally boring process, and to do so methodically. I have little to offer in the way of rewards for this hard work.

What I can offer (and it will have to be up to the individual's judgement as to whether this is a reward or not...) is extended access to the BBS systems. Unfortunately, I have no easy way of giving workers easier access to the systems - you will still have to take pot luck as to when you can get onto the systems.

Thanks, Peter Hunt

I'd like to thank Peter Hunt, who has already made a very good start on the job. With people like him helping out, the job shouldn't take too long to get well under way.

PROTEUS TECHNOLOGY

OS/2 Software Price List.

Lotus 1-2-3 /2 ver 2.0	520
AMI PRO/2 ver 3.0	520
Arcadia WorkPlace Companion	75
BackMaster - System Backups	139
BackupWiz for OS/2	205
Borland C++/2 ver 1.0	300
BenchTech for OS/2	155
Bocasoftware System Sounds	99
Bocasoftware WipeOut	99
CA-Realizer - V B Tool for OS/2	180
CPU Monitor Plus	200
CS-EDIt/2 - Config.sys Editor	55
CSet/2 Ver 2.0	700
Describe ver 4.0	290
DeskMan/2 - Tools to manage WPS	99
FreeLance Graphics/2	520
GammaTech Utilities for OS/2 2.X	199
Golden Compass - for Compuserve	150
Link Right - Laplink like program	180
ObjectVision/2	290
OS/2 for Windows	55
OS/2 Upgrades	From 115
Performance 2.1 -optimize your system	60
PM-Comm ver 2.10 - WPS Coms	149
Personal REXX for OS/2 and DOS	244
REXX Library to make REXX more flexible	81
REXX Term - REXX Terminal Package	158
Use HP ScanJet IIp/ IIc with any SCSI adaptor	145
Lotus SmartSuit for OS/2 - Ami, 123, Freelance, CC:Mail	850
Window Washer ver 2.0	70
Norton Commander for OS/2	180
Multiscope Debugger for OS/2	500
Zortech OS/2 C compiler ver 3. 1	550

All prices are subject ot change without notice.

We Also deal in OS/2 capable hardware

TEL (07) 344-6013
FAX (07) 344-6013
BBS (07)344-6012

Proteus/2 - Joe McKinnon

★ Upgrade to 486 Power! ★

INCREDIBLE! Upgrade your 386 to 486 muscle p-o-w-e-r! ... from just \$369!!
Don't get left behind! Now is the right time to move from 386 to 486 technology.
Special deals available (to selected customers).
Move up to 486 power. FROM JUST \$369. Ring now!



Top Computers!.. from \$1,350

➤ Try this one for size:

- 486SX-33 VL Bus
- 4Mb RAM
- 210Mb hard-drive
- 1.44Mb floppy-drive
- SVGA .28mm monitor with 1Mb card
- 2S/1P ports
- 101-key keyboard, Mini-tower case
- PLUS some special FREE extras!

Full details, price, ring NOW!

Sound Blaster!

Wow!! Brilliant sound on your PC! Great for those new games ... prices start at just \$129!!

MULTIMEDIA (CD-ROM and Sound Card): the fastest growing area in computers today.

Can you afford to miss out?
Order your Multimedia Upgrade Kit today.

Ph: (07) 808 9441 after 10am

R & O E

Lindsay & Nettie Bates

civilcad

version 4.4 & 5

Enrollments are now being taken for instruction in civilcad.

Course details are available from Bruce Laker on 801-1586 ah or Carol Wilson at Mt Gravatt TAFE on 215-1350 bh. Limited places are still available.

SIG NEWS



*The Prepared-for-Melbourne-
Weather SIG*

Dulcie Haydon - SIG Coordinator

WINDOWS SIG

Firstly I would like to thank all of those regular members for their participation in the SIG during the past year. Some members have worked particularly hard for the SIG over the year, and their contribution has been significant in the success the SIG has had during the year. As the Windows SIG Co-ordinator, I wish you all the best for 1994, and I hope that it will prove to be the best computing year yet.

In January we started out having a look at customising Word and Excel, with the aim of Bernard Speight and myself doing the presentation. As it turned out, the presentation expanded into an inter-active question and answer session on Word, and we never got to see Bernard's expertise or see Excel. So for February, and at the group's request, we will be expanding further on this subject.

The March meeting is scheduled to see a presentation on the new Norton Desktop Version 3.0 presented by Mic Collis, as well as either, the continuation of Word/Excel customisation, or a Q & A session.

Later in the year we have plans for reviews of Quicken and Money, an update on the new Publisher version 2 and other new programs as they are available.

Also, the November meeting with the major software supplier Micrografx, proved to be the biggest SIG drawcard for last year. So, we will be investigating the possibilities of inviting other major forces, such as Microsoft, Borland, Lotus, Wordperfect, etc. to present special events to the SIG, but with a different emphasis from the presentations that they would do for the Main Event. Basically, we are planning for 1994 to be the biggest and best yet for the Windows SIG, so keep an eye out for details of our future event announcements.

See you at the next meeting, *Belas Bow-Strider*.

Gold Coast SIG

Next meeting Wednesday, 1st March, 7:00pm at the Merrimac High School, Block B, corner of Rio Vista Blvd and Dunlop Crt, Mermaid Waters

Contact: Jo-anne Ellis - (075) 710-113

Accounting SIG.

Last month was the first meeting of newly reformed Accounting SIG. It was attended by seven interested members, whose initial discussion centred on the relevance of the SIG name. It was decided that the name for the SIG was too limiting for the diverse interests of those present, and it gave the impression that we were only interested in accounting.

Topics of interest for those present included Investment, Finance, Bookkeeping, Accounting, Taxation, Management, and General Business. From this it was agreed that the name of the SIG should be changed to Business & Finance SIG.

The emphasis of the SIG will be on the benefit which can be provided to a business by the use of computers and specific software packages. One area of concentration will be the early provision management information through-out the continued growth of a business.

The next meeting of the SIG will be at the February Club meeting at 3 pm. The anticipated format for future meetings will be:

- a 15 minute discussion on topics of interest,
- a product review by a group member - 30 to 45 minutes, and
- further discussion and a decision on the next product to be reviewed.

The presentation for the February meeting will be on 'How to give a Presentation', (requested at the first meeting). Any interested persons should contact Graeme Gardener on 354 3237 a/h or turn up on the day.

Genealogy SIG

Next outing: February 26th

Venue: Family Historical group, Seventh day Adventist Church, Nambour.

Time: 3pm to 6pm - staying open especially for Brisbug, meals available.

MARCH: There will be a rescheduled Toowong Library visit.

Regular meeting: Brisbug Sunday, QUT, 3pm

SIG DIRECTOR'S COMMENTS

It has been enlightening to meet our SIG convenors this month. These volunteers give of a very precious ingredient - their time. I am grateful for their participation and wish them heaps of support for 1994.

WEEKDAY SIG

This SIG is made available to anyone for any topic.

My interest at this time is DTP; hopefully my registered vision of EnVision Publisher will arrive this week. The shareware EVP has given me a good introduction with its easily understood tutorial. More on this one later.

Hopefully in 1994, I will see Windows running on my 288/AT (as written up in Sigbits Sept '92). Also, I would love to try out a scanner (has it arrived from America, yet, Rex!!) (*yes ... friendly computer dealer*)

Next meeting: Wed. 23rd February, 1pm.

10 Lamond Close, Calamvale.

If not a suitable time, please ring.

Dulcie Haydon: 273 7373

SOUTHSIDE SIG

The venue has been at Rex Ramsey's home at Forestdale. This location may be too far to travel for some members. That is why this SIG meeting is in need of another venue. Anyone with a solution (a hall maybe) please contact Rex or Qulcie. New members are quite welcome to participate.

Contact: Rex Ramsey: (07) 800 4827

Pascal SIG

Meets Brisbug Sundays, QUT, Kelvin Grove

Contact: Steve Cann - (07) 245 4453

OS/2 SIG

Meets Brisbug Sundays at QUT, Kelvin Grove, 3pm for relative newcomers to OS/2.

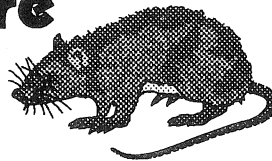
Also meets the Wednesday after the meeting (next Feb 23rd) for more advanced users. Check with Paul Marwick for venue for the Wed meeting

**Watch this space for news
of new SIGs and revival of the
popular Environmental Sensing
SIG**

Cunningware

Ph (07) 841 4623

Fax (07) 841 3120



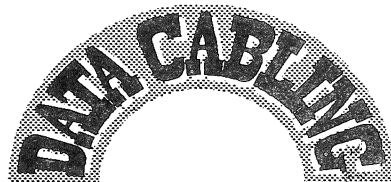
It's 1994 and Ratty has embarked on a frenzy of research and development. Somewhere on Brisbane's outskirts in his makeshift laboratory under a compost heap he is designing a product which will change computing forever. In the tradition of Microsoft's Chicago, Ratty has codenamed this project "Willawong".

He needs funds urgently so he is selling stock at extraordinarily low prices !!

Corel Draw 4.0 with free CD-ROM	\$ 550
DOS 6.2 Stepup	\$ 20
DOS 6.0 Upgrade	\$ 70
"Just Grandma and Me" - Kid's CD-ROM	\$ 99
MS Dinosaurs CD-ROM	\$ 93
MS Encarta 1994 CD-ROM	\$ 189
MS Flight Simulator V 5.0	\$ 74
MS Golf CD-ROM	\$ 76
Norton Desktop for Windows V 2.2	\$ 150
Works for Windows V 3.0	\$ 135

Phone Ratty NOW for the best prices on software, peripherals, academic requirements and quality systems !!

Watch this space closely for further news on "Willawong".
(No...don't watch now...next issue of Sig Bits I mean !)



DATA COMMUNICATIONS CABLING

Networking LANs, MANs, WANs.

Ethernet and Token Ring Cabling.

No job too small.

All types of cable installed including Fibre Optics.

AUSTEL Licence holder.

Licensed Electrical Contractor since 1978.

BrisBug Member

GREENBOROUGH PTY. LTD.

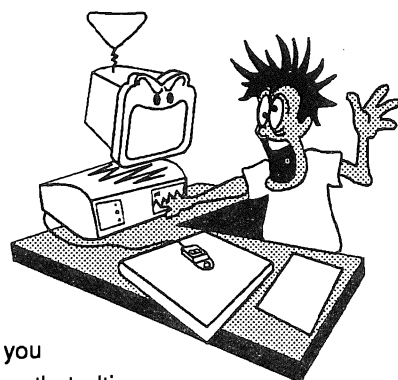
Contact Steve Cann

PH. 018 732 335

A/H 245 4453

EDUCACHEON

Mark Mullins - Education Director



Sunglasses

on..."I am ready !!" you shout as you achieve that ultimate feeling of self fulfilment. The stereo speakers go 'beep' once and a strange, but somehow lonely letter C appears on your otherwise black, barren monitor. Oh...*#@!!

The time is now 4 am in the morning and the only response you have received from the grey box and screen is 'Bad command or file name'. You have been muttering "interactive my ..." since 1 am. You lamely turn the b....y thing off and stick it on the mantle-piece next to the hood ornament off your Leyland P76 and the fluorescent golf balls.

Has anything akin to this ever happened to you? Do you ever say "Oh, I'm too old to learn about that stuff now but my kid is a real whizz" or "That's not my job, I'm the boss around here and I make decisions not play with those things!" or "Hey man, I just be cool dude...get down and get funky but don't give me no computer junkie !". I think that even the most fanatical 'Flat Earth Society' member realises that computers are here to stay...so if you can't beat 'em.....!

Well I'm pleased to announce that there is already help at hand and it's getting better. Brisbug has been educating new users since its inception. In 1994, the Committee and I as Education Director, plan to focus more on the specific needs of the new user whilst still catering for those more experienced folk.

The classes which are currently run at most times of the year in computing languages and operating systems will continue. Do not despair if you are half way through C++ ! It is however proposed that more "introductory" courses will be held which will be designed to explain the various topics from the very "grass roots" upwards. One such example of this is a program in "Introductory Communications" to be conducted by your esteemed vice-president, Graeme Darroch, which will commence in March. John Tacey is already running an award winning "Introduction to DOS". There is also the "New Users Course" which is run in the afternoon by Chris Raisin where general topics are discussed.

It is anticipated that Brisbug will also run intensive one and two day courses on a par, (or should I

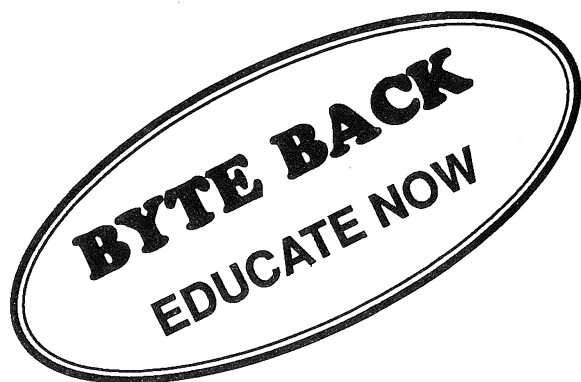
Yep...you've finally done the ultimate new age thing and gone and bought one of those grey boxes with a TV screen and a keyboard with more keys than a top of the range Hammond organ. What a bargain! You as the ultimate discerning shopper have even managed to wrangle a nicer looking grey box that has lots of lights and green numbers on the front which change when you switch on the turbo charger thingy!

Maybe you've even met a smart salesperson who sold you a thing with 'multi-media'. Won't it be great to be able to pick up cable television as soon as it's operational!

In fact you begin to fantasise about all of the things the guy from that computer showroom said you could do with a computer. Just imagine chatting to people in the USA, editing whole newspapers at home, drawing professional images and writing sound tracks for your home movie that will sound better than the theme from 'Rocky'...Hold on!!...did he say 'this' computer or 'a' computer could do these things?

You suddenly feel a surge of panic. Beads of nervous perspiration roll off your quivering lip as you quickly stuff the Visa card slip in your sock drawer. You quickly assemble the machine and throw away all those surplus cables. Just in case it doesn't do all the things the bloke in the shop said it would do you announce to your partner and kids that "technology as big as this should only be turned on when the temperature and humidity is low" which as you well know will be soon after everybody goes to bed.

It's 11.30 pm and you've finally got the kids off to sleep after threatening that you could talk to the Easter Bunny with this new thingy and you would be sure to tell the rabbit to just hop right on past. You plug in the box. A feeling of relief manifested by an untwining of your intestines sweeps over you as the green numbers come on and lights flash. The monitor starts to show numbers and things about 'checking memory'. "Come on old feller" you mutter as you grip the keyboard and things continue to happen. You go looking for your sunglasses when you realise that any moment now the room will literally blaze with colour, strobes of blinding light and deafening stereo sound will soon assault your senses just as the store computer did!!



say above par), with those run by other institutions at great expense. Brisbug intends to charge only as much as is needed to cover expenses. The classes will be 'hands on' and I hope to persuade the committee to give some form of certificate of achievement on successful completion. Further details on this subject will appear in subsequent issues of Significant Bits.

Please don't think that because you know very little you may be ignored. In fact if you know nothing whatsoever about computers you should make a point to be the first person in the door. The lecturers will go to great lengths to ensure that all of your questions are answered or will direct you to someone who knows the answer you seek.

The normal monthly courses will be run over a set period of sessions. I would envision that after a short period of organisation, most would not run over more than six Sunday meetings and will then recommence. This will enable those interested to attend the lecture of their choice without fear of missing another course which they may also wish to sit in on.

It is also envisioned that some classes will be reduced to one and one-half hours duration and that these classes will commence at 9am rather than 10 am as is currently the case. This has yet to be discussed at full committee level however it seems to be a more cost-effective approach as the rooms are booked and paid for from 9 am. QUT offers no alternative but to book from this time and the committee is always careful to conserve your funds where possible.

To ensure that new user educational needs are catered for in the best possible way the committee needs to know what you would like to have provided in this respect. Suggestions should preferably be in writing and directed to me at P.O. Box 100, Rochedale South 4123. I may also be contacted by telephone during business hours on (07) 841 4623. If you have experience in a particular facet of computing and have the necessary communication skills, offers to conduct courses would also be very welcome.

Should you have friends or acquaintances who wish to learn a little computing talk them into to coming along as a visitor. I believe that they would be

New Class in February

OS/2 - Paul Marwick

Commencing in March

Introductory Communications

Graeme Darroch

Starts at 9 am

C++ with Geoff Baker

most impressed with what Brisbug has to offer for so little.

I look forward this year to meeting all member's needs where possible in the area of education and I will show by my actions that I am fully committed to making people comfortable, productive and satisfied with computing.

**GET UP EARLIER FOR THE
MARCH MEETING ! - SOME CLASSES
ARE TO COMMENCE AT 9.00 AM**

Six reasons to switch to Microsoft FoxPro 2.5 #1: dBASE Compatibility.



For Microsoft® Windows™ users, FoxPro 2.5 is a true Windows-based database that lets you use your dBASE knowledge, data and applications.

Microsoft
Making it easier

Minutes - General Meeting - Sunday 16/1/94

Chris Raisin (Secretary)

It was 1-02 pm (Eastern Standard "Normal" time) and Lloyd Smith was once more opening a meeting of the BRISBUG fraternity. Everyone was biting at the bit (or biting at the byte) for the AGM to start - and so Lloyd started things rolling quickly.

First some very sad news - Kirk McPherson, (Gold Coast SIG Treasurer), son of well known member, Neil McPherson, was killed in an accident on Wednesday 12th January. Lloyd expressed the sympathies we all felt for the McPherson family and advised the members that he would be representing Brisbug at the funeral at Nerang on the Monday following this meeting.

The PC shows this year

The coming year will see your computer club participating in TWO major PC events - "PC 94" on May 17-19 at the Brisbane Entertainment Center (the biggest show in Aussie this year!) and the Computer Expo at the Exhibition Buildings during September. If

you plan to come to PC 94 please be aware that children will not be admitted.

Visit to Gladstone

On the 12th March the President (plus any other keen members wanting to go...HEY! Does this mean you??) will visit our friends at Gladstone for a show to be "put on" by Microsoft and the Corel Draw people. Please, think about having a "different" couple of days and "come on down!" (up?). Contact Lloyd and advise him that you are coming!

The new Accounting SIG

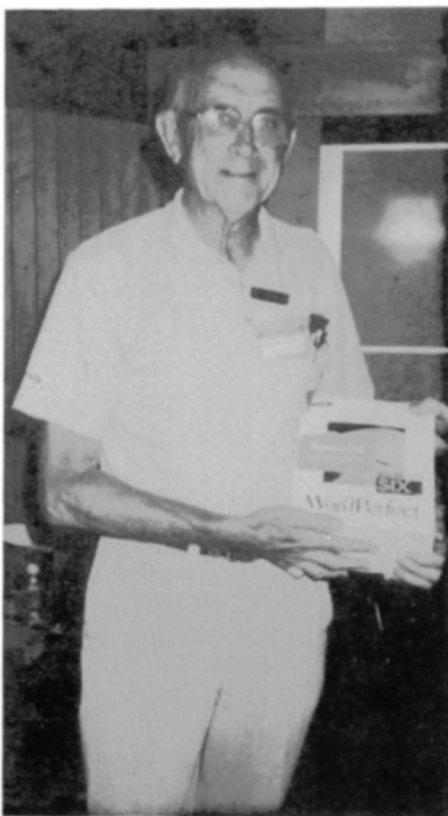
The Accounting SIG is reforming. Lloyd advised any interested people to loiter outside after the AGM and help to resuscitate (spell check working overtime) the group. Thoughts on a different name - "Business and Accounting SIG", "Cross the T's and dot the eyes SIG"(!?)

Out, out, damn magazine...

Brian Sanbourne can't fit in his house! There are hundreds of old Significant Bit magazines flowing out the front door (actually in several neat piles). If you want a particular mag prior to 1993, they are going cheap at \$1-00 each. He still has plenty of 1993 issues under the bed - and they are going at \$3-00.

Rewards sub-committee

Lloyd advised the still fidgety (can't wait to vote at the AGM) group that the Rewards Committee By-Laws have been formally adopted by the Management of Brisbug. This month there are two recipients! Paul Marwick (of BBS Sysop fame) and John Tacey (of teaching and much patience fame). Both Paul and John gladly



Below: Brian Sanbourne and Terry Tuttle accept their software as part of the Rewards Scheme at the Xmas meeting

accepted software packages to their liking (I think Paul received Wordperfect for OS/2 and John received Q&A). Nice to see deserving members getting recognition from the club.

The management BBS

Report time! (Graeme Darroch (Vice-President) advised that the MIS-BBS ("SIBBI") [Management Information System?] is going ".... for leather" at the new and improved speed of 14,400 baud on telephone number (07) 209-4980. The board is part of the FidoNet with a node number of 640/829. There are some Echo areas to peruse or in which to leave messages. The board is designed mainly for messages (not files!) and is a means of communication between members - mainly leaving things such as these minutes or other articles for publication and administrative matters.

Treasurer's report

Max Kunzelmann then took to the stage, promising his Treasurer's report would not to take as long as Graeme's, and refusing to take the mike with the words "if they can understand Mr Darroch they can understand anything!" (continuing resentments from the Swiss/Scottish War of 1153). Briefly (and he wasn't):

End Nov.	\$ 7,945
Inc.Dec.	\$15,850
Exp.Dec.	\$15,598
End Dec.	\$ 8,186

The bumper December issue of the magazine cost \$9,456 to produce with postage of \$1,278. Rent for the rooms at QUT was \$1,630 for the month and the Christmas party came to \$1,840.

Max resumed his seat and Lloyd reappeared (magic!). The President apologized for the caterers "no-show" today. They forgot!

Farewell to Bernard Speight

A few tummy rumbles followed and then Bernard Speight gave his final SIG report for the year (plus quite a bit). Bernard has recently retired and being a glutton for punishment, is setting up his own business from home. Not being able to devote as much time as he would like to the job of SIG big-stick, he has decided to "not stand" at the AGM. He IS (thankfully) still available to help any members who have queries regarding Windows (get him on the "Help Line"). Bernard thanked the members for allowing him to work in the SIG area and "thanks to all the SIG conveners who made the job such a breeze!". Much applause.....a very appreciative audience who valued Bernard work as SIG Coordinator during 1993.

Magazine

Ron Lewis briefly spoke about the magazine....The deadline for articles, ads etc. for the next issue is 21/1/93 and the March or April issue will be a theme issue on "NEW USERS" (so start writing, contributors!)

BBS

Paul Marwick wrecked by macro I use for the BBS report...you know the one "The board is still there.....", etc.... It IS still there (I hope) but Paul has introduced a new innovation. A "Big Brother" going by the name of "File Minder" is constantly looking for files which have not been downloaded in the previous 90 days.....as soon as it finds one...ZAP! Paul then reminded us all that he is still looking for volunteers to do some BBS-related jobs for him. If interested please leave him a message on the board .

Library

The final report before theAGM was that of the Library.

Lloyd quickly mentioned (since time was running out) that there are two great new games available: BLAKESTONE (9162/3) and DOOM (9164-9166) (I know the numbers because I bought them straight after the AGM....Secretary) A word of warningthey are ADDICTIVE. If you have ever played WOLFENSTEIN you would LOVE them. ■

Six reasons to switch to Microsoft FoxPro 2.5
#2: Speed.



No PC database has the speed of FoxPro 2.5. On average, it's 30 times faster than dBASE IV 1.5! (Micro Endeavours Inc., Nov 92).

Microsoft
Making it easier

The Workers' Xmas Party

Staff Reporter



Just before Christmas, some of the Workers from Brisbug got together with presenters and supporters at Trawlers Restaurant to celebrate another successful year.

In all some 60 people turned out, including guests Craig Spender of Microsoft, Brian Adams and Catherine of Electroboard, Hi Lee (of multimedia fame), John Massey (Windows Users Group), Rob Neary (Ramware), Greg Marsh Abtec Sound and Vision Hire.

Many members were accompanied by their "Leaders of the Opposition", who are more used to suffering silently in the background.

Excellent seafood and a few festive drinks combined to re-inforce what Brisbug is all about - a social club of people who like computers and enjoy each other's company.

Voted a success, it is likely to become an annual "institution", following as it does last years outing to the "Gabba" dogs.



Above Left. *Registration Desk* regulars, Sarah (left) and Pauline Ausburn came along with parents Mal and Jan

Left. *Membership Secretary*, Jan Ausburn, "better half", Mal, *Treasurer* Max Kunzelmann and "boss", Kate, enjoyed seats with a view, and a Christmas champagne



Left. A group of likely lads, Mark Hayes (theatre crowd control), Hi Lee (MultiMedia and morphing presenter), Rob Neary (Ramware) and Graeme Darroch (VP) smile for the camera.

at Trawlers Restaurant

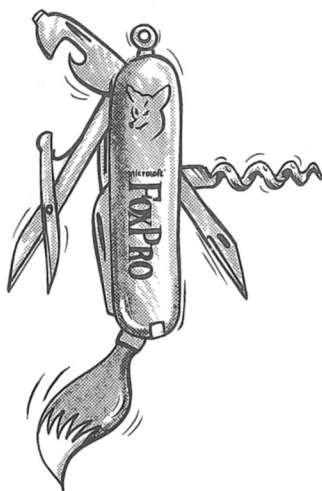
Above Right: Newly appointed Development Director, Carl Planting was accompanied by wife Louise. Carl was founder and president of the Gold Coast SIG before moving to Brisbane.

Right: Sysop Paul Marwick, President of the Windows Users Group, John Massey, and Microsoft's Craig Spender wait for the next course.

Below: The "Lady in Blue", Lyn Harding, wife of ex-Treasurer, Peter, prepares to attack a lobster thermidor. Due to Peter's well-known photogenicity (or lack of it), we edited him out of this shot—Ed



Six reasons to switch to Microsoft FoxPro 2.5
#3: Tools.



Better tools (and tools for new tasks) help you get more done in less time. Plus, full mouse support will make you even more productive.

Microsoft
Making it easier

Brisbug's Xmas Party

The Christmas party following the main presentation at the December meeting is a very pleasant tradition at Brisbug. This year was our first party at QUT.

Among the more unusual duties of the Meeting Co-ordinator is the organisation of the Christmas party, which traditionally follows the last main presentation of the year.

Despite the fact that QUT had already finished its fourth semester and closed for the festive season, the Refectory staff turned up to provide some suitable Christmas fare.



Treasurer, Max Kunzelmann, encouraged by the hordes from the Junior Group, prepares to deliver the coup-de-grace to the specially decorated Xmas cake.

Speeches were banned... Lloyd's "Merry Xmas" being the closest approach to formality.

Treasurer Max was appointed Chief Carver of the Cake, a duty which the anxious members of the Junior Group reckoned was taking far too long. Eventually, an Inner Cabinet committee of President, Vice-President and Treasurer accomplished this difficult task with a minimum of fuss. What was Max doing with his calculator... working out the price of a slice of Xmas cake?

Graeme did not, however, manage to convince any of the committee members to dress as Father Xmas, maybe partly due to his observation that a number of them would need minimum padding to be the right shape (was he merely trying to discourage the consumption of Xmas cake?).



Having abandoned the Registration desk, Kate Kunzelmann assists Max to feed the Senior Club



An Executive Committee attacks the Xmas cake. Note the weird angle of cutting, guaranteed to produce crumbly slices.

continued from page 2

From the Engine Room

Volunteering your services means you are prepared to put yourself out for the benefit of others. It means that when you are allocated a job, you do it and when you have finished you come back to ask for more. Each of us have some individual talents. Maybe you cannot get up in front of a group and lecture, because your nerves could not stand it, but you could still sit at a desk in the membership area and check off names or you could spend some time in the library and learn about what goes on. If you volunteer to evaluate software from the BBS or Library, do what you promised, just don't get the software and then have the Sysop or the Librarian chase you to return the disks after a number of months.

Education expectatations

Many new members join Brisbug assuming that we will teach them all they need to know about their computer and how to use it. They become very disappointed in a short while because we do not hold their hand through each operation and often complain because the lectures at classes are "over their heads". They tend to drift away from our meetings and finally loose interest altogether.

Hopefully, this year we will overcome this problem with an expanded education program to deal with the wishes of very new users. This objective will only succeed if we have volunteers to assist and participation by members to attend the classes.

For Brisbug to continue to grow and expand we need more involvement from individual members. Come to the monthly Sunday meetings and participate, just don't sit at home and watch sport or whatever on the "Box". We have provided you with a outlet for your interest in computers, so use it.

Lloyd Smith

Member's Private Sale

PRO AUDIO SPECTRUM 16 STEREO SOUND CARD

\$ 180.00

Peter Scopes (07) 267-7512

Borland C++ Version 4

Needs Windows 3.0 or better

Original Disks and Manuals

\$ 260.00

Call Peter (07) 205 3772

Christmas Raffle Winner



Lucky winner of the Xmas raffle, a copy of CorelDRAW V4, was Ken Dunne, member no 1135, of Sunnybank Hills, seen here accepting the prize from VP Graeme Darroch

Six reasons to switch to Microsoft FoxPro 2.5

#4: Language Power.



FoxPro 2.5 is packed with over 100 new language features, which means you spend a lot less time writing code. Magic for developers!

Microsoft
Making it easier

Microsoft® MS-DOS® 6.2 -

Copyright Microsoft Corp - August 1993

Microsoft Corp publishes "help" files for reviewers to help them evaluate the features of new products. This Evaluation Guide for MS-DOS 6.2 is reproduced, with permission, from the November 1993 TechNet, as it will help members in their review of this important update - Ed

MS-DOS 6 Recap

By all measures, MS-DOS 6 has been an extremely successful product:

- More than 5 million MS-DOS 6 Upgrades were shipped in the first 90 days after its release; this figure does not include an estimated 6 million OEM shipments
- Customer satisfaction with the MS-DOS 6 Upgrade is over 90 percent, placing it among the leaders in customer satisfaction in the software industry
- Validating the support for the Windows™ operating system, 82 percent of MS-DOS 6 Upgrade customers use Windows
- Usage of the key features - DoubleSpace and MemMaker - is very high at 62 and 54 percent respectively
- The installed base of DoubleSpace users is more than 3 million and growing rapidly - making it the leader in compression technology

Nevertheless, concerns about MS-DOS 6 and DoubleSpace have been raised. Our reason for releasing MS-DOS 6.2 is to achieve as close to 100 percent satisfaction as possible.

What We Learned About Compression

Customers told us they wanted disk compression "built in" as part of MS-DOS. So we included compression in MS-DOS 6 and highlighted it as the key feature. This decision turned out well: the MS-DOS 6 Upgrade sold in record numbers, and our market research indicated that DoubleSpace was the main reason people purchased the product.

Over the course of millions of DoubleSpace installations, we learned a great deal. Distilling down

reams of data and conversations with tens of thousands of customers on our product support lines, the key facts are:

- An extremely small but clearly important number of DoubleSpace users have had data corruption problems
- We have found no major bugs to fix which would explain any of these serious problems
- There are external conditions that explain most but not all of these serious problems; by "external conditions" we mean conditions outside DoubleSpace's control like defective hardware or errant software
- Many customers have not reached the same level of comfort or expertise with disk compression as part of MS-DOS as they have established with the FAT file system and MS-DOS in general over the years

The fact that any customer has had data corruption problems, regardless of the reason, is a very serious concern for us. It's not surprising we didn't discover any serious bugs to fix given the vast amount of DoubleSpace testing we performed with MS-DOS 6. The external conditions that can cause corruption on a DoubleSpace drive are rare and quite difficult to reproduce; otherwise, we would have caught them in our beta test of over 10,000 sites. DoubleSpace in MS-DOS 6 already handles certain external conditions, such as the loss of power in the middle of compressing a drive, but not other less frequent conditions. For example, most often DoubleSpace can manage a slightly malfunctioning hard disk, but given a specific set of conditions, a slightly bad disk can cause severe corruption.

MS-DOS 6.2 Vision

Not surprisingly, the phrase on users' lips is "more safety." Therefore, the overriding objective of MS-DOS 6.2 is to provide new data protection technology without lessening the functionality provided by MS-DOS 6. Our approach for providing added data protection is to address both errant hardware and software on people's systems. We want to help any way we possibly can because when the extremely rare problems do surface, it does not matter to the

Reviewer's Guide

customer who is responsible. By way of analogy, MS-DOS 6 provided a driver's side air bag and anti-lock brakes to help make compression safer and easier. MS-DOS 6.2 extends this protection by providing a passenger-side airbag. We hope this new technology will not only provide extra protection for our customers' data, but also increase customer's comfort in dealing with disk compression.

With this new technology in MS-DOS 6.2, we think we have really pushed the bounds of protection for data compression. But there is an important caveat: *Notwithstanding our enhancements in MS-DOS 6.2, we cannot guard against everything. Given an installed base of over 100 million systems and the peripheral devices, drivers and applications used in connection with these systems, the combinations for testing are innumerable.* Consequently, we encourage customers to use regularly the backup and anti-virus tools included in MS-DOS or utilities similar to these provided by third-party vendors.

In addition to new data protection technology, we have added some new features based on feedback we have received from customers. We have elaborated on these items in the "Improvements in MS-DOS 6.2" section.

How to Compare MS-DOS 6.2

Users have a choice among real mode, desktop operating systems. In comparing MS-DOS to the other choices, there are a number of overarching user concerns one should consider.

Compatibility is of utmost importance

For all users, the decision to change operating systems is high-risk and low-benefit. If an operating system prevents them from getting their work done, then they will be dissatisfied regardless of how many new, compelling features it contains.

The key product components must work

In MS-DOS 5 and 6 we focused narrowly on getting the key features to work and work right. The developers on the MS-DOS team have always spent their time getting a few features right as opposed to developing many semi-functional features. For example, much time was spent getting *Setup* and

MemMaker to work seamlessly on systems running *Stacker* or *Superstor*, and yet this work appeared in very few feature checkbox charts.

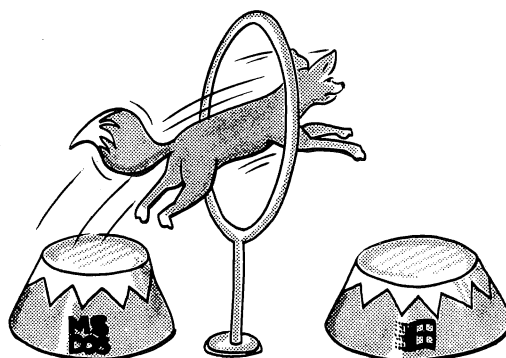
Our customer research validated our choice to focus narrowly: If a user had anything less than a positive experience with any one of the key components in MS-DOS 6 - specifically: kernel compatibility, *Setup*, *DoubleSpace*, *MemMaker/EMM386* or *SmartDrive* - they were dissatisfied with the entire product.

Users dislike differences

People invest a lot of time getting comfortable with an operating system. A body of knowledge - user experience, books, in-house helpdesks, and so on - accumulates over time on how to use and manage the operating system. The more an operating system differs from the common standard, MS-DOS in the case of PCs, the more negatively it is viewed as yet another product to be learned and supported. Users look disapprovingly at differences unless there are extremely compelling reasons to justify them.

"But there is an important caveat: Notwithstanding our enhancements in MS-DOS 6.2, we cannot guard against everything."

Six reasons to switch to Microsoft FoxPro 2.5 #5: Transportability.



Available for MS-DOS® & Microsoft® Windows™, the cross-platform capability of FoxPro 2.5 lets you transport applications between them.

Microsoft®
Making it easier

Enhancements in MS-DOS 6.2

The following summarizes the key enhancements in MS-DOS 6.2.

DoubleSpace protection enhancements

DoubleSpace in MS-DOS 6.2 includes important new technology designed to protect user data:

- **DoubleGuard.** Data corruption can result if an errant program or TSR corrupts the in-memory buffers used by DoubleSpace to hold its critical data structures. To protect against this possibility, DoubleSpace now incorporates technology known as DoubleGuard that calculates a checksum every time it modifies its buffers, and then verifies the checksum before writing the buffers to disk. If the verification fails, DoubleGuard pops up an error message and halts the system to limit any corruption that may occur. In addition, DoubleGuard periodically verifies that DoubleSpace's own in-memory code has not been corrupted. DoubleGuard penalizes performance about 2 percent, and can be turned off by the user.
- **Surface scan on installation.** Corruption can occur on both uncompressed and compressed drives if disk data structures are written onto an unmarked bad sector. To avoid the possibility of writing its data structures onto unmarked bad sectors during installation, DoubleSpace now surface scans the entire disk before compressing it. If DoubleSpace finds any unreliable sectors, it recommends the user run ScanDisk (discussed below) and then re-run DoubleSpace.

Other DoubleSpace enhancements

We made a number of other enhancements to DoubleSpace in response to common customer requests:

- **Uncompress.** DoubleSpace now provides an option that lets users easily uncompress a DoubleSpace drive (assuming they have enough disk space). After uncompressing the last DoubleSpace drive on the user's system, DoubleSpace will be uninstalled from memory.
- **Smaller memory footprint.** Part of DoubleSpace now resides in the HMA, and its footprint has shrunk from 43K to 33K with automounting off, and to 37K with automounting on.
- **Automounting.** Compressed floppy disks

and other compressed removable media now mount automatically under MS-DOS and Windows. Automounting increases DoubleSpace's resident size by 4K, but can be turned off by the user.

- **Error message improvements.** We have replaced cryptic error messages such as "Error 105" and "The CVF is damaged" with clear messages that tell the user what corrective steps to take.

ScanDisk - Disk scanning and repair tool

ScanDisk diagnoses and repairs errors on both DoubleSpace and uncompressed drives. Intended as a replacement for both *CHKDSK* and *DoubleSpace /CHKDSK*, its features include:

- **Automatic crosslink repair.** *CHKDSK* detects but does not fix crosslinks. *ScanDisk* does both by automatically resolving crosslinks. *ScanDisk* also detects and fixes crosslinked clusters within a compressed volume file (CVF). Also, like *CHKDSK*, *ScanDisk* detects and fixes lost clusters.
- **Repair of damaged CVFs.** Using a number of different checks, *ScanDisk* can regenerate and repair certain damaged portions of a CVF, and recover all data in many cases.
- **Surface analysis.** *ScanDisk* will scan an entire disk, and if it encounters any unreliable sectors, mark them as bad and "hotfix" the disk by moving data from the bad sector to a good sector.
- **Undo.** *ScanDisk* lets the user save a record of any changes *ScanDisk* makes to a floppy disk, and can subsequently undo any changes it makes to the hard disk.

SmartDrive

The enhancements to *SmartDrive* are:

- **CD-ROM caching.** *SmartDrive* now caches CD-ROM drives with performance comparable to or better than other CD-ROM cache products available.
- **Write-caching disabled by default.** A new switch, */X*, disables write-caching on all drives and Setup now installs *SmartDrive* by default with write-caching disabled. If the Upgrade is installed on a system that already has write-behind caching on it will leave it on.
- **Flush to disk before returning to the C: prompt.** If write-caching is enabled, *SmartDrive* flushes its cache to the disk after

all commands before returning the user to the C: prompt. Flushing to disk can be disabled for faster batch file performance, if desired.

System Startup

New system startup features include:

- **Interactive execution of AUTOEXEC.BAT.** Interactive start, *F8*, now lets users selectively execute commands in *AUTOEXEC.BAT* as well as *CONFIG.SYS*.
- **Interactive batch file execution.** As a by-product of the above feature, users can execute now batch files interactively by typing "*COMMAND /Y FOO.BAT*" at the C: prompt.
- **Clean start without DoubleSpace.** The *Ctrl-F5* combination lets users clean boot without loading *DoubleSpace*, which may be necessary for certain troubleshooting procedures.

Other utility enhancements

Enhancements include:

- **Commas.** *DIR*, *MEM*, *CHKDSK* and *FORMAT* now display all numbers greater than one-thousand with commas, as in

57 file(s) 1,081,654 bytes
43,753,472 bytes free
- **No-swap DISKCOPY.** By using the hard disk as scratch space, *DISKCOPY* now makes floppy-to-floppy copies without requiring multiple disk swaps.
- **Copy Overwrite protection.** Before copying one file over another with the same name, *MOVE*, *COPY* and *XCOPY* now all warn the user first.
- **Higher capacity DEFRAG.** By using *XMS*, *DEFRAG* can now defragment disks with approximately twice as many files as previously. The limit is approximately 20,000 files, but can be higher or lower depending on disk configuration.
- **Windows Undelete name-checking.** Windows Undelete no longer lets users create invalid file names.

Finally, we have removed *DOSSHELL* from MS-DOS 6.2, and placed it on the MS-DOS 6.2 Supplemental Disk. MS-DOS cost-of-goods is of utmost concern to both Microsoft and our PC manufacturer licensees, and to prevent MS-DOS 6.2 from requiring an additional disk we had to move some functionality

onto the supplemental disk. We chose *DOSSHELL* as its usage among MS-DOS 6 users is nearly zero because of the explosion in Windows adoption.

Beyond MS-DOS 6.2 -The Future of MS-DOS

Concurrent with the development of MS-DOS 6.2, a leap-frog team is working on the version of MS-DOS beyond MS-DOS 6.2. Although the next version of Windows, code-named "Chicago," will not require MS-DOS, we will release a standalone version of MS-DOS because people work differently, and some prefer a non-graphical operating system.

This future version of MS-DOS will be based on Chicago technology, and will release at approximately the same time. Like Chicago and Windows 3.1 today, it will include key features such as the ability to multitask MS-DOS-based applications as well as support for high-performance device drivers that run in protect mode and have no conventional memory footprint. The consistency in the device driver model between Chicago and MS-DOS will lead to a huge selection of robust drivers and thus make it easier for customers to add peripheral devices.

In addition, like all major releases of MS-DOS in recent memory, this version will be compatible with existing applications and device drivers, and will not provide any new sets of APIs to support new classes of MS-DOS-based applications.

Microsoft and MS-DOS are registered trademarks and Windows is a trademark of Microsoft Corporation.

Six reasons to switch to Microsoft FoxPro 2.5 #6: Leadership.



Microsoft® has become the world's leading supplier of PC software by developing superior, rigorously tested products like FoxPro 2.5. For more information please call the Microsoft Sales Information Centre on (02) 870 2100.



Microsoft
Making it easier

Dan's OS/2 Tips

Dan Bridges

I found the changeover to OS/2 rather difficult. I still find the command prompt (whether 4OS2 under OS/2 or 4DOS in a DOS session) a more interesting place than the Workplace Shell with its objects but I've been working at adopting a more object-oriented outlook.

Once you've been using OS/2 & the Workplace Shell for a while you will be looking for easier and more efficient means of doing things. At this stage you can appreciate the tips provided by others who have already trodden the road you're on.

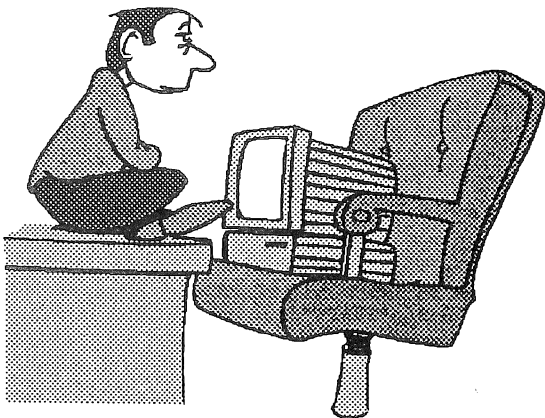
Sources of practical tips

I've been reading a number of national & international echomail OS/2 conferences for some time now. Many interesting tips have appeared there. Also some excellent sources of tips can be found in .INF files, available from BBSs, such as Tim Sipples' *FAQ21x.xxx* (Frequently Asked Questions) and M. Woo's *TRICKSx.xxx* (Silly Tricks).

A good, cheap book of tips is "*Your OS/2 2.1 Consultant*" by Herb Tyson (SAMS, 1993, 618 pages, \$37.95 r.r.p. from BCF - a further 10% discount applies to Brisbug members). This book is very well organised. When I first saw this book I thought that its Question & Answer format would limit its usefulness. However Tyson appears to have put a lot of work into this and the questions are well chosen. You end it reading this book sitting in front of a computer.

Another book that appears excellent is "*OS/2 2.1 Unleashed*" (David Maskowitz & David Kerr et al, SAMS, 1993, 1136 pages). Although I've not

seen it in Australian bookstores yet, an imported copy I briefly perused looked very interesting. It has received much favourable comment in the international OS/2 echoes.



Gee, I'm glad you suggested that!

Here is a tip/trick that I've found useful. Part of this is mentioned in Tyson's book but I've also seen it mentioned a few times in OS/2 echoes.

Adding your most-used programs to the desk-top pop-up menu

Ever wanted to open a OS/2 window or some other program showing on the Workplace Shell but had the icon obscured by multiple windows in front of it?

When you click on an empty part of the Desktop with the right mouse button a popup menu appropriate for that particular object (i.e.. the Desktop) appears. It is possible to add your own programs to this menu. Then you will easily be able to access them from just about anywhere.

Steps:

1. Right click on an empty portion of the Desktop.
2. Click on the arrow to the right of "Open" and select "Settings".
3. In the Settings Notebook click on the "Menu" tab.
4. In the "Available menus:" box ensure that the "Primary pop-up menu" is highlighted.
5. Click on "Create Another..." in the "Actions on menu: Primary pop-up menu" section.

6. You now enter the name you want to appear. In this example we'll provide an OS/2 Window item. To make it easy to select we'll also give it a hotkey. The other items on the Popup menu use letters but that makes it more difficult both to remember and select a letter that hasn't been used for another hotkey. So instead use the numerals 0-9. The hotkey character is signified by a preceding tilde "~".

Enter the title: ~0 OS/2 Window.

7. In the "Program Name:" section click on "Find Program..."
8. In the "Find" window select "Locate..."

9. We don't need to search the whole Desktop structure to find the OS/2 Window object since we

✓ Sources of tips

✓ Setting display parameters

✓ Adding desk-top pop-up menus

know it's in the "Drive Prompts" subfolder in the "OS/2 System" Folder. So click on "Related", click on the "+" in the "OS/2 System" item to open it, and then click on the "Command Prompts" folder. Once this is selected click on "OK" to end the "Locate Folder" operation.

10. Now the full "pathname" to this folder will appear in the "Find Folder:" box. Select the "Search just this folder" button. (It won't hurt if you don't do this as there shouldn't be any subfolders off "Command Prompts". Now click on "Find" to execute the search.

11. Select the "OS/2 Window" (or whatever it's called) object and then click on "OK".

12. Finally, click on "OK" in the "Menu Item Settings" and then close the "Desktop - Settings" notebook by double clicking on the desktop icon in the top left-hand corner.

13. Test by right clicking on an empty section of the Desktop and pressing "O".

This takes a lot of space to describe but is easy to do, particularly if you can give a straight filename rather than the extra steps required to search a folder for an object. (Well, it seems that way to me with my poor grasp of the object-oriented metaphor.)

Setting display parameters

Before we discuss using filenames I'd like to focus on the setting of the OS/2 Window object itself. Since I operate in 800 x 600 mode I prefer to operate in 43-line mode. Others may prefer some other value between 25 & 60 lines on a screen. (I like to leave the minimised icons at the bottom of the screen unobscured so I use 43-lines with a 10 x 8 font.)

Paul Marwick showed me a simple CMD file to set screen heights. While it appears overly simple it does come in handy. V.CMD has a single line:

```
@C:\OS2\MODE C080,%1
```

To set the screen height to 43-line mode after

you've opened a OS/2 window you type "V 43", assuming you have the directory for your CMD files in your path.

C: drive on my system is a 45 MB partition for the operating system and its swapfile so when I start a new OS/2 session I don't want to end up on this drive.

Here are Set-

tings for my OS/2 Window object:

Path and file name: *

Parameters: V 43

Working Directory: D:\

Because I ran a number of OS/2 programs that adjust themselves to the current screen height (LIST, QEdit, File Commando) I want to set the screen height and start-up drive/directory when I run one of these programs from the Desktop pop-up menu. Since the "Program Name:" box in Step 7 does not allow multiple filenames or parameters it is necessary to run most menu items via CMD files.

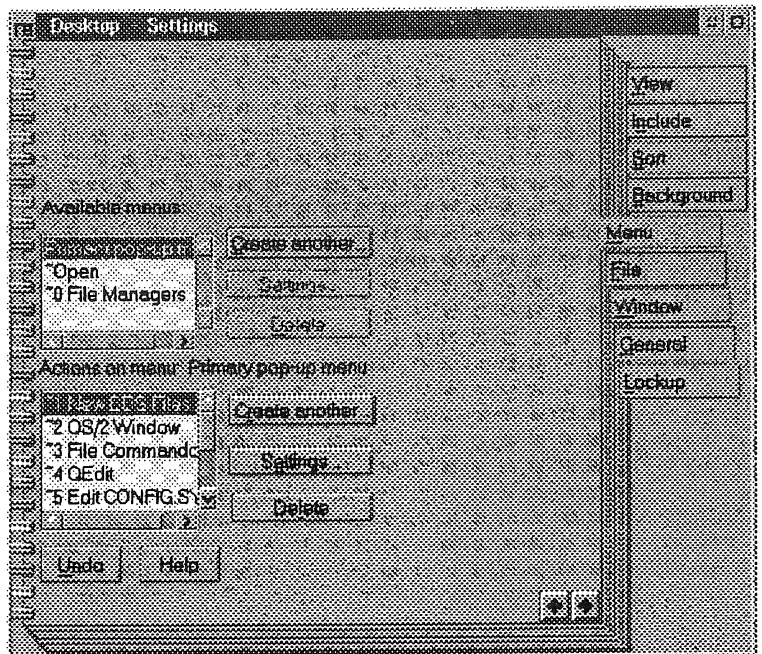


Figure 1. Desktop Settings notebook showing the first five menu items off the main pop-up menu. Also notice the File Managers alternate menu

Here is one to run File Commando v2.0 in 46-line mode on D: drive. *STARTFC.CMD*:

```
@ECHO OFF
C:\OS2\MODE C080,46
D:
D:\PROG\FC
```

If you want to use V.CMD rather than imbedding the equivalent MODE command as I've done here remember that you'll need to CALL it if you want execution to return to the original CMD file (as with DOS batchfiles) so the second line would be:

```
CALL V 46
```

Figure 2 (below) shows the items I have on my Desktop pop-up menu, and a sub-menu off the *File Managers* menu item:

There appears to be no way to alter the order of menu items. They remain in creation order. So if you want a better organised menu than mine put some thought in to it first before commencing.

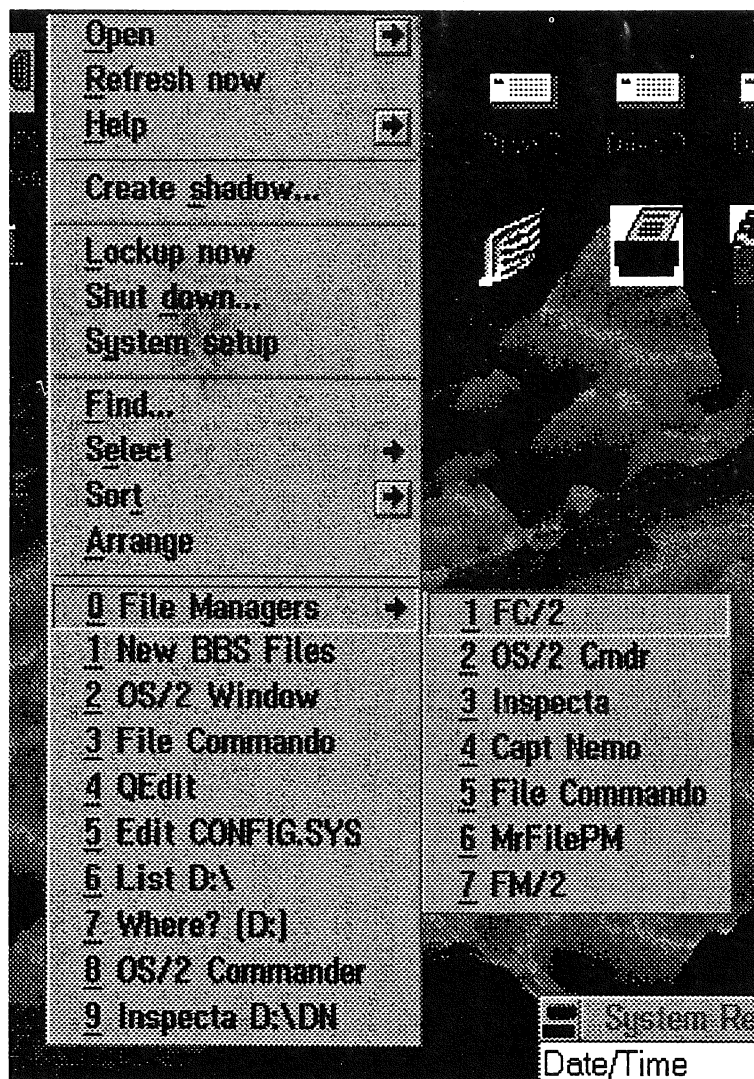


Figure 2. Partial screen dump of the pop-up menu with sub-menu ready for selection

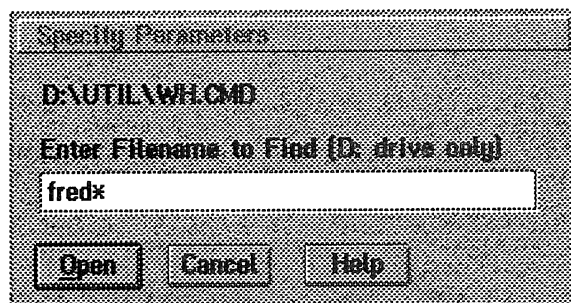


Figure 3. An example of prompted input from a custom menu item.

A more complex example

The seventh menu item is an example of how to prompt for input in a menu. It invokes *WH.CMD* which is part of *BLKOS* (a shareware package) and is a *REXX* file (*RE*structured *eX*tended *eX*ecutor - a command/macro language developed originally for IBM VM mainframes but now found on many platforms). The menu item runs "*WH*" which is an object that was found in the *D:\PROG* directory (as in Step 9). However the settings of the actual *WH* object deserve closer attention. The program filename is straightforward: "*D:\UTIL\WH.CMD*".

The Parameters setting:

```
D:[Enter Filename to Find (D:
drive only)] & ECHO. & ECHO.
& PAUSE Press a key to close
this window... %
```

The `[]` brackets cause a prompt box to appear with the text inside the brackets displayed. Say you enter "*FRED*". See Figure 3 (above). The first command becomes "*WH D:FRED*". The ampersand characters "&" allow multiple commands on the same line. They execute, in turn, after *WH* has finished. Here they result in two blank lines and then a "*Press a key*" etc. message follows. This enables the user to see the contents of the final *Where* screen (the *REXX* program has pausing for intermediate screens built-in) before closing the box.

The *PAUSE* message does not appear to be configureable under *OS/2*'s *CMD.EXE* but I'm using *4OS2.EXE* instead which does allow this.

The final percent sign is necessary. Without it the prompt message appears as:

```
Press a key to close this
window... C:\desktop
```

Here the real name of the Desktop is being passed as an addition to the rest of the parameters. (*CMD.EXE*'s *PAUSE* won't show this, but it's still there.) This is due to the object-orientated approach to working in the Workplace Shell. Say you have an icon of an editor "*E.EXE*". You can drag the icon of a text

object like "D:\PROG\READ.ME" on to the editor's icon to start-up the editor with the file loaded. In effect you are issuing the following command :

E.EXE D:\PROG\READ.ME

In the case of our menu item we don't want the *WH* object to accept the name of the Desktop as a parameter so a single percent sign is place at the end of the parameter setting to thwart this. This will also stuff up the ability to "drag & drop" anything else on to the *WH* object but for a file-finding program this is not a mode of operation that would be used anyhow.

Creating a sub-menu off another menu

I've got three file managers on my current menu because I like to use different ones for different purposes. It is possible to replace these on the initial menu with a "File Managers" item and then present the three of them on a submenu. Here is how you could do that:

1-3. Open the Desktop Settings notebook and click on the Menu tab (as before)

4. We are going to create a new menu item in the "Available menus:" section. Select the "Create another..." for this section.

5. In the "Menu name:" box of the "Menu Settings" page enter, assuming "O" was the required hotkey:

~O File Managers

6. Select "Conditional cascade" and then select "OK"

7. Select "~O File Managers" from the available menu box and then use the "Create another..." of the "Actions on menu: ~O File Managers" to create your submenu items as you would for the Primary pop-up menu.

On the main pop-up menu the "O File Managers" will have a right-pointing arrow (like the one "Open" has) that leads to the submenu.

Again it's usually better to run *CMD* files rather than the program directly. Otherwise the program will be passed "C:\Desktop" as a parameter. You can't use a "%" in the program name field. So "D:\PROG\FM2.EXE %" is not allowed here.

Also, it may not be a good idea to disable the "drag & drop" receptivity of a file manager's icon as discussed earlier. The reason is you may want to "drag & drop" on to a file manger's icon because some file managers can take accept a parameter to nominate their start-up directory. For example: *MrFilePM* v4.5. You can open your Drives Folder, select a directory and then drag it (by holding down the right mouse button) on *MrFilePM*'s icon.

By running your programs in your custom menus & submenus via *CMD* file you can avoid any parameter passing problems.

To clarify this let's return to *V.CMD* mentioned earlier. It consisted of just:

@C:\OS2\MODE C080,%1

If we were to use this in the parameter field of a menu item that opened an OS/2 window, as in "V 43", it will be passed "C:\Desktop" but this it is the second parameter position (%2) and is not used by *V.CMD*. To see that this is so, temporarily alter *V.CMD* to:

@C:\OS2\MODE C080,%1
@ECHO %1 %2

Conclusion

I think you'll find this tip particularly useful. I use my custom menu all the time when I'm not at the command prompt.

Sometime in the future I'd like to look at various boot disk setups and the boot process in general.

COMPUTER AUCTION AND SALE

SATURDAY FEBRUARY 26

CNR NEMIES RD AND BRANDON STREETS

RUNCORN (Look for the signs)

Open for inspection	9-00 am
Auction starts	10:30 am

Working computers

Peripherals

Large Quantity of parts

Some office equipment

Hundreds of items

Catalog available

Phone 848 0433

Microsoft "Access" -

Microsoft Corp

Microsoft Access provides a wide range of options for managing the security of your applications. If you aren't concerned about security, you can give users free access to all your application's objects. However, if you want to use the security features of Microsoft Access, you can implement those features in a variety of ways.

For example, you can:

- Assign and lock the permissions of objects you want to protect, such as the modules containing your Access Basic code.
- Assign default permissions for selected objects, and then enable system administrators at your distribution sites to manage permissions for those objects.
- Ensure that objects are secure between distribution sites.

This article describes:

- The Microsoft Access security model.
- Examples of several common security strategies.

It assumes you are already familiar with the basic concepts of Microsoft Access security described in online Help and in Chapter 25, "Administering a Database System" of the Microsoft Access User's Guide.

The Microsoft Access Security Model

With the security features of Microsoft Access, you have both control and flexibility in how you choose to protect your application, its objects, and your data. When you distribute your applications, you can restrict access to some objects yet enable a site administrator to manage security at each site. You can provide free access to some or all of your application's objects.

You can implement security for the application you distribute for the run-time environment by managing:

- The workgroups used by your development and distribution sites.

- The accounts with which objects and databases are created.
- The permissions assigned to objects.

As you consider security issues for your application, it's important to keep in mind how Microsoft Access keeps track of security information.

Workgroups and Accounts

Microsoft Access stores all user and group account information, as well as encrypted password information, in the unique system database (SYSTEM.MDA) that is created automatically when Microsoft Access is installed. Users who share the same system database belong to the same workgroup. In fact, this system database is what defines a Microsoft Access workgroup, which is sometimes also referred to as a Microsoft Access system.

Several user and group accounts are created automatically by Microsoft Access.

Within each system database, Microsoft Access creates:

- An **Admin user account** that serves as the system administrator's default account.
- A **Guest user account** that permits users without an assigned user account to log on.
- An **Admins group account** that is reserved for system administrators.
- A **Users group account** comprised of all user accounts.
- A **Guests group account** comprised of all guest accounts.

All other user and group accounts in a workgroup are created by individual users.

Each user and group account is identified in the system database by a unique Security ID (SID). The SID is a binary string combining the user or group name and the Personal ID Number (PIN) supplied when the account is created. For example, if you create a user account called "My Account" and supply a PIN of 1234 in the New User/Group dialog box, Microsoft Access identifies the account by combining "My Account" and 1234.

"Access" was a runaway success when launched by Microsoft in 1993. This article is reprinted from the November 1993 edition of the M/S TechNet CD-ROM

Securing Applications

Note:

Because Microsoft Access creates the Admin account SID using system information instead of a PIN, you can never re-create the original Admin account. You can restore the original Admin account only by reinstalling Microsoft Access or by starting Microsoft Access using the original system database. For this reason, you should always make a back-up copy of your system database before deleting the Admin account.

When a user successfully logs on to a secure system, Microsoft Access retrieves the user's SID from the system database and uses the SID to identify the user for all subsequent operations.

Case-Sensitivity

Account names and passwords differ in their case-sensitivity. When a user logs on to a secure system, the user account name entered in the Logon dialog box isn't case-sensitive. A user can log on as either "My Account" or "my account".

The password, however, is always case-sensitive. Microsoft Access accepts a password only when it is typed with the exact combination of uppercase and lowercase letters the user entered when creating the password.

Note:

Although Microsoft Access doesn't check for case-sensitivity when you enter a user account name in the Logon dialog box, the user account name is actually stored as a case-sensitive string in the system database as part of the SID. If you ever need to re-create a deleted account, you must type the account name exactly as originally entered. Creating a user account by typing "My Account" with a PIN of 1234 produces a different SID than typing "my account" with the same PIN.

Permissions

Microsoft Access stores permission information for an object, such as whether a user has full permissions or no permissions, in the database that contains the object.

For example, if you assign permissions to objects in the *MYAPP.MDB* database, Microsoft Access stores those permission assignments in a system table in the *MYAPP.MDB* database file.

Permissions for an object can be assigned by:

- Any user account that has full permissions for the object.
- Any member of the Admins group of the workgroup in which the object's database was created.
- The owner of the object or its database.

When you create an object, you become the object owner and Microsoft Access stores your SID with the object. A user logged on to Microsoft Access using the owner's account can always assign permissions for the object.

Similarly, when you create a database, you become the database owner. Microsoft Access stores your SID and the SID of your workgroup's Admins group with the database. Users can always assign permissions for objects in the database if they log on to Microsoft Access using either of the following:

- The database owner's account.
 - The account of any member of the Admins group of the workgroup in which the database was created.
-

Note:

Because only user accounts can log on to Microsoft Access, you can't log on using the Admins group account name.

The Implications of Ownership

As you design your application, keep in mind what ownership of an object or database means:

- The owner of an object can always assign permissions for that object and gain access to it, or enable others to gain access to it.
- The owner of a database can always assign permissions for all objects in that database and gain access to them, or enable others to gain access to them.

As a result, a system administrator can't always control access to objects the administrator doesn't own. For example:

- A system administrator can remove all access permissions for an object from all users, but the owner of the object or its database can always reassign those permissions.
- If a system administrator restricts the owner's access to an object, the owner can restore the permissions and regain access to it.

For this reason, you should design your application so that you are the owner of any objects whose access you want to control. Several strategies for managing the ownership of objects are described later in this chapter.

The Admins Group

Because Microsoft Access stores the current workgroup's Admins group SID with a database when you create the database, members of that Admins group always have the ability to assign permissions for the database's objects — but only within that workgroup. For example, members of your workgroup's Admins group, while they are logged on to your workgroup, can always assign permissions for the objects in your application.

However, members of your Admins group can't necessarily assign permissions for those objects while they are logged on to a different workgroup because:

- Microsoft Access creates a unique Admins group account and SID for each workgroup.
- Before letting a user assign permissions for an object, Microsoft Access checks in the current system database to see if that user belongs to any groups whose SIDs match the database owner's Admins group SID.

Although members of your Admins group belong to the database owner's Admins group, Microsoft

Access won't find that Admins group SID in the second workgroup's system database. Admins group members are guaranteed of being able to assign permissions in the second workgroup only if they are logged on as the owner of an object or its database.

Similarly, a member of the Admin group on a different workgroup can't necessarily assign permissions for objects in a database created in your workgroup. For example, system administrators at your distribution sites can't change permissions for your application's objects unless you let them, or unless they can log on using your system database and the account of a member of your Admins group.

Note:

To ensure the security of your application, make sure users don't have access to your system database. Otherwise, they could gain full access to your application's objects.

Changing Ownership

If you are using security in your application, the best approach is to decide the ownership of objects before you create them, then create the objects from the start with the ownership you want.

For example, you can create any objects whose permissions you want to control while logged on using your unique developer's account. You can create objects for which you want users to have free access while logged on using the Admin user account, which has the same SID in any workgroup.

There are often times, however, when you want to change ownership of an object you've created, or to make yourself the owner of an object created or owned by someone else. You can transfer ownership of individual objects or of an entire database.

Note:

Transferring ownership of objects erases any table relationships. Re-creating those relationships is an important part of transferring ownership.

- To transfer ownership of an object

1. Log on using the account to which you're transferring ownership.
2. Import, or copy and paste, the object.
3. Re-create any table relationships.

■ To transfer database ownership

- 1. Log on using the account to which you're transferring ownership.
- 2. Create a new database.
- 3. Import, or copy and paste, all objects from the old database.

It's usually easier and quicker to import or export multiple objects than copying and pasting them.

- 4. Re-create any table relationships.

These operations in effect create a new version of an object, or a database and its objects, with the currently logged on user as owner.

Run With Owner's Permissions Property

To enable users to run queries that use tables or queries for which they may not have permissions, Microsoft Access includes a Run With Owner's Permissions query property. When this property is selected in the Query Properties dialog box:

- Microsoft Access considers only the query owner's permissions when it checks permissions before running the query.
- Only the query owner can save changes to the query.

The owner of the query's database and members of the Admins group of the workgroup in which the query was created can't save changes to the query when this property is selected. However, they can disable the property, and then save changes. Any user with Modify Definitions permissions for the query can set the Run With Owner's Permissions property.

Security Strategies

By managing workgroups, accounts, and permissions, you can implement a variety of security strategies for your application. The remainder of this chapter describes several common security strategies. These examples use several varieties of objects created using different user accounts.

You can create:

- Admin objects to which users have free access on workgroups that aren't secure.
- Protected objects whose permissions you want to assign and lock.
- Site Admin objects whose permissions systems administrators at your distribution sites can manage.

You create these objects using the Admin user account and two user accounts you create: a Developer account and a Site Admin account.

Table 1 (below) summarizes whether different user accounts can always assign permissions for objects at the sites where you distribute your application.

Note that individual users in a secure workgroup or users logged on as the Site Admin account can't necessarily assign permissions for Admin objects because they don't own the objects or their database. Individual users have free access to Admin objects only on workgroups that haven't been secured, where they are automatically logged on using the Admin account.

Important:

Make sure you back up your system database before you implement security for your workgroup. If you want to restore your original workgroup, you must start Microsoft Access using the original system database, or reinstall Microsoft Access. If you've already

User Account	Admin Objects	Protected Objects	Site Admin Objects	User-Created Objects
Admin	Yes (object owner)	No	No	No
Developer	Yes (db owner)	Yes (db and object owner)	Yes (db owner)	Yes (db owner)
Site Admin	No	No	Yes (object owner)	No
Individual user	No	No	No	Yes (object owner)

Table 1. Assignable permissions

created your application, also back up the application before assigning permissions for objects.

The following examples outline common security strategies you may want to use in your application.

Example 1

Enabling Full Permissions for Objects

In some cases, you may want to create an application that lets users have full permissions for objects. For applications that run in a workgroup that isn't secure, you can accomplish this by creating Admin objects using the Admin account. For applications that run in a workgroup that could be either secure or not secure, you can accomplish this by making sure full permissions for objects are assigned to the Users group.

- To enable full access to objects in a workgroup that isn't secure

1. Start standard Microsoft Access in a workgroup that isn't secure, or log on using the Admin account.

In a workgroup that isn't secure, Microsoft Access automatically logs you on using the Admin account without displaying a Logon dialog box.

2. Create your application database.
3. Create your Admin Objects.

The Admin account owns the database and any objects you create while you are logged on using the Admin account. All users logged on using the Admin account, including those logged on automatically in a workgroup that isn't secure, have full permissions for the database and objects because they are logged on as their owner.

- To enable full access to objects in any workgroup

1. Start standard Microsoft Access in a secure workgroup. (For information on securing a workgroup, search Help for "secure system.")
2. Create an account to be the owner of the application and its objects.
3. Exit and restart Microsoft Access.
4. Log on using the designated account.
5. Create your application database and its objects.

Microsoft Access automatically gives full permissions to the Users group for all new objects.

6. Distribute the name and PIN of the account that owns the application and objects to your distribution sites.

All users have full permissions to the application database and its objects because they automatically belong to the Users group, which has full permissions to the database and all its objects. Users assume all permissions associated with the groups to which they belong.

However, because any user can assign permissions for the objects, it's possible that a user could remove permissions for some, or all, users. For example, a user could open a database in standard Microsoft Access and assign or remove permissions by choosing the Permissions command from the Security menu. To restore full permissions for these objects, a system administrator can create an account using the owner's name and PIN you've distributed, log on using that account, and reassign permissions.

Example 2

Protecting Selected Objects

In many cases, you may want to create an application that contains a mixture of protected objects and objects for which you want to assign full permissions. Protected objects could be objects such as macros or modules for which you want to assign and lock permissions.

For example, you may want to assign permissions that enable system administrators at your distribution sites to run selected macros, or to prevent users from viewing the Access Basic code in your modules.

- To create protected objects in your application

1. Using standard Microsoft Access and a secure workgroup, create a Developer account assigned to the Admins group.

Note Make sure you use an account other than the Admin default system administrator's account. If you use the Admin account, any user who logs on to Microsoft Access using the Admin account can change permissions for the objects you create.

1. Save the Developer account name and PIN and store it in a safe place.

The account name and PIN make up the Developer SID. If you need to re-create the account, you'll need to retype the account name and PIN exactly as you entered it originally.

2. Exit and restart Microsoft Access.
3. Log on using the Developer account.
4. Create a new database for your

application, or transfer ownership of the database to the Developer account.

See "Changing Ownership" earlier in this chapter.

5. Create your application's protected objects, or transfer ownership of existing objects to the Developer account.
6. Remove group permissions for the protected objects.

For example, make sure you remove permissions for the objects from the Users and Guests groups. Because Microsoft Access combines a user's permissions with those of any groups to which the user belongs, and because all users belong to the Users group, a user retains the Users group permissions even if the individual user's account permissions have been removed.

7. Assign the permissions you want for the protected objects.

By following these steps, you ensure that users at your distribution sites are prevented from changing permissions for objects unless they create an account with the same case-sensitive account name and PIN as the Developer account, and then log on using that account. If you don't distribute the Developer account name and PIN, the permissions remain locked as you assigned them.

Example 3

Creating Site Admin Objects

In some cases, you may want to create an application that contains objects that a Site Admin at your distribution sites can manage. For example, in a custom order entry application for the Northwind Traders company, you may want to let a Site Admin manage who can view and modify data displayed in the *Orders* and *Sales Totals* forms.

You can use the security features of Microsoft Access to create these Site Admin objects, and then let the Site Admin at your distribution sites manage security for these objects and any objects users create using your application.

- To create Site Admin objects in your application

1. Using standard Microsoft Access and a secure system, create a Site Admin account.
2. Save the Site Admin account name and PIN and store it in a safe place.

The account name and PIN make up the Site Admin SID. If you need to recreate the account, you'll need to retype the account name and PIN exactly as you did originally.

3. Exit and restart Microsoft Access.
4. Log on using the Site Admin account.
5. Create your application's Site Admin objects, or transfer ownership of existing objects to the Site Admin account.
6. Assign any default permissions you want to assign to the objects.

Note that the Site Admin can change these assignments.

You can then distribute your application with a designated Site Admin account to be used for managing the security of Site Admin objects. Because the Site Admin account created and owns the objects, a user who logs on using that account can always assign permissions for the objects and gain access to them.

Note:

Each distribution site must create a Site Admin account for that site using the Site Admin account name and PIN you supply. The account name must be an exact case-sensitive match to your Site Admin account name. If you include Site Admin objects in your application, make sure you include instructions in your application's documentation for creating the Site Admin account.

Although the Site Admin account can manage the security of the designated Site Admin objects, keep in mind as you design your application that system administrators at your distribution sites may have more limited control over other objects. For example:

- Unless you create your application database using the Site Admin account, or unless the Site Admin belongs to your Admins group and is logged on to your workgroup, the Site Admin has limited control over objects created by users of the application.

A user can create an object and, as the owner of the object, remove the Site Admin's permissions for it. Unless the Site Admin account owns the database, or belongs to your Admins group and is logged on to your workgroup, the Site Admin can't reassign permissions for the object. The Site Admin account doesn't own the object or the object's database, and the account is logged on to a different workgroup from the one in which the database was created.

- A member of the Admins group at your distribution site other than the Site Admin has

limited control over the Site Admin objects.

Because the Site Admin account owns these objects, the account will always be able to assign permissions for them. Other members of the Admins group at the distribution site won't always be able to assign permissions for the objects because they belong to a different workgroup than the one in which the database was created. For this reason, you should encourage your distribution sites to protect their Site Admin SID.

Example 4

Securing Objects Between Distribution Sites

In some cases, you may want to create an application that contains selected objects you want a Site Admin to be able to manage, but that must remain secure between distribution sites. For example, you might create a payroll application with sensitive data in tables that one distribution site would want to prevent another site from viewing.

To secure Site Admin objects between distribution sites, you can:

- Ensure that objects are secure before you distribute your application by creating a unique Site Admin SID and objects for each distribution site.
- Instruct Site Admins how to secure the Site Admin objects at their sites after you distribute your application.
- To secure objects between sites before you distribute your application
 1. Using standard Microsoft Access and a secure workgroup, create your application's Site Admin objects and assign any default permissions you want to assign to the objects.
 2. Create a Site Admin account for each distribution site using a unique Site Admin account name or PIN.
 - *This will create a unique Site Admin SID for each site.*
 3. For each site, log on using each site's unique Site Admin account name and password.
 4. For each site, import—or copy and paste—the Site Admin objects to a unique application database.
 5. For each site, distribute a copy of your application with the unique name and PIN of the Site Admin account that owns the site's Site Admin objects.

Each site must create the Site Admin account for that site using the account name and PIN you supply.

- To secure objects between sites after you distribute your application
 1. Instruct each distribution site to create a unique Site Admin account name and PIN for that site
 2. Instruct each site to log on using the Site Admin account they've created.
 3. Instruct each site to import, or copy and paste, the Site Admin objects to the Site Admin account they've created.

This changes ownership of the Site Admin objects to the site's unique Site Admin account. Users at other sites can change permissions for these objects only if they create an account using the exact same account name and PIN, and then log on using that account.

If necessary, the Site Admin can change the permissions of the original Site Admin objects by creating a separate Site Admin account using the Site Admin account name and PIN you supply, and then logging on using that account.

MEMBER'S PRIVATE SALE

Microsoft Excel 4.0 for Windows
Top Spreadsheet. Original disks, manuals.
\$169 ono

Microsoft Access 1.1 for Windows
Rel. Database. Original disks, manuals.
\$169 ono

MS Windows for Workgroups 3.1
Upgrade from W3.1. Upgradeable to 3.11.
\$59

Lindsay Bates (07) 808 9441 after 10am

Members Private Sale

MS VISUAL BASIC V 3.0

Standard Edition for Windows on 3.5" HD disks

PLUS

"VISUAL BASIC GAME PROGRAMMING"

\$ 170 the lot

Max 281 2759

OH SAY! I Can See!



Phyllis O'Fearna

SOMETIMES EYEGLASSES AREN'T ENOUGH - Phyllis reviews *ZoomText*, a screen magnification utility for both DOS and Windows programs

An unfortunate by-product of "increasing visual challenge" (which is what they call dimming eyesight nowadays) is that one day you realize you're trying to fly your computer by the seat of your pants!

Your average PC and its software just aren't user friendly for someone who often misses characters in small batch programs being copied from Significant Bits or other computer magazines, and is stubbornly literal in attempting to interpret garbled commands.

Recently I went along to the 'Low Vision Centre' as the Q.U.T. Optometry Clinic is popularly known, to find out what help is available for people with this problem. Among their bag of tricks are a number of special interest to computer users.

This article is limited to *Zoomtext* which may be described as screen magnification software. It is a TSR program that sits on top of your normal working applications and makes everything bigger. Unlike the 'Zoom' feature in WordPerfect for Windows and WordPerfect Ver.6.0, *Zoomtext* (there are both DOS and Windows versions) causes no distortion of text to spoil your carefully laid-out page format.

An initial menu gives you the choice of types of zoom, from a full page, to a corner, to a single line. Magnification can range from 2X to 16X, depending in part on the type of zoom you choose.

Installation is simply a matter of copy-

ing the program to your hard disk and initializing it by typing 'zoomtext'. The permanent version will modify your *PATH* and *AUTOEXEC.BAT* if you wish, but whether or not you choose to load the program automatically at boot-up, *ZoomText* can still be turned on or off by a keystroke. Documentation includes instructions for using *ZoomText* from either single or double-floppy disk drives if needed.

Other *ZoomText* features include tracking the cursor, mouse pointer or menu bar movements; the ability to scroll in any direction at a speed you can control for reviewing existing data; a colour selection palette for both normal and zoom windows; wordwrap within a zoom window; three fonts to improve 'readability' (an optional choice).

Like many other software programs, using *ZoomText* may take a little perseverance before you are comfortable with it, but if you have travelled the road from single-lens, through bi-focal and tri-focal spectacles, this is no real problem.

Documentation available to me through the local distributor is thoughtfully printed in large easy to read text, with ample illustrations showing how the screen appears at each step in the vary-

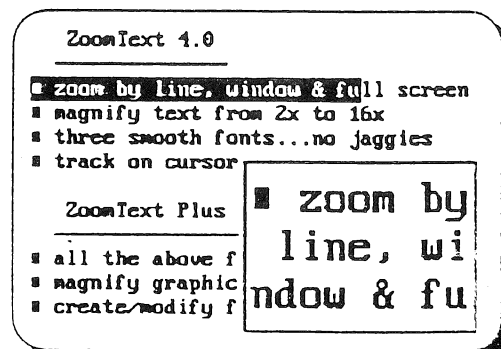
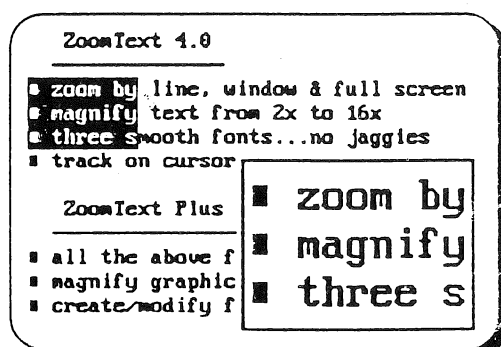
ing usages available. Documentation is provided 'on disk' in ASCII text, which means the font for printing it can be specified by the user.

Like all TSR software, some fine-tuning of configuration may be necessary for satisfactory service in conjunction with some applications. Keyboard configuration is available for various shortcut and hotkey combinations, but I found the program fully useable without modification. (I did not try it in Windows). With *WordPerfect v. 6.0*, *ZoomText* must be loaded before WP60 is started.

The demo (being made available to the Brisbug Software Library) is fully operational, but will cut-off after about 10 minutes, but can be re-started and re-used in endless 10-minute segments.

The program is not cheap, but the individual user will have to determine the worth for his/her particular need.

Local representative is Mike Parr of S8Utilities. His business telephone is (07) 349 9811, After Hours (07) 800 2947. Mike will not only answer your questions and take orders, but will add your name to a periodic newsletter containing information about other equipment and services available to low-vision individuals.



These screen dumps illustrate two of the magnification modes, PORT and WRAP available.

Some OS/2 Ver 2.1

Dan Bridges

OS/2 v2.1 is a sophisticated, powerful and flexible operating system. I switched to it eight months ago after seven years of operation at the DOS prompt. The DOS prompt had been made a comfortable place thanks to using 4DOS instead of COMMAND.COM and I had achieved an acceptable level of multitasking with DESQview. I did not use Windows, after flirting with it in the v2 and v3.0 days.

I'm very glad I went to OS/2. At work, at around the same time, we went to Windows 3.1. OS/2 is much better when it comes to stability. When something crashes under OS/2 (usually due to a programming error) you can close that window without jeopardising the stability of the rest of the system. Crashing an application while multitasking under Windows often requires a reboot.

User responsiveness and power

User-responsiveness under DOS/Windows, while using the floppies, is pathetic. Under OS/2 I can be performing a number of background tasks such as a high-speed comms file transfer (with zero errors occurring at the FTP-to-FTP level), formatting one or two floppies at the same time, archiving up a large number of files, searching through a mountain of files for a particular string and yet still enjoy good user-responsiveness in a word-processor in the foreground.

To prove the point I created a batchfile. Under OS/2 a batchfile has a .CMD extension. See TEST.CMD in Figure 1.

The batchfile:

Formats floppy in A: & B: without intervention

TEST.CMD:

```
START /N FORMAT A: /ONCE /V:TEST

START "Formatting B:" /N FORMAT B: /ONCE /V:TEST

START PMSEEK EF:* COMMAND LINE

START /N ZIP -R TEST D:\QB45
```

then closes the background windows - the second line also shows how a custom title can be assigned to a session's window;

Uses *PMSEEK* (one of the "Productivity" programs that comes with OS/2) to search through all of E: & F: (a total of 4,500 files) for the phrase "COMMAND LINE" (notice with OS/2 how "" is equivalent to "*" - this action is CPU and disk intensive;

Uses the OS/2 freeware *InfoZip* program to create a zipfile that contains 621 files, totaling 5.6 MB, from D:\QB45 and its subdirectories - this action is CPU intensive.

I ran this batchfile from an OS/2 windowed command prompt session after I'd just commenced a 600 KB zipfile V.32bis file transfer session. The transfer was using the LiveWire v2.0 comms program. The average for this Zmodem file transfer was 1,657 cps.

As soon as I'd started the transfer and launched the activities in TEST.CMD I immediately switched back to DeScribe (OS/2 graphical WP program) to continue writing this. The responsiveness of *Describe* was still good. This was achieved without having to fiddle with any task priority options. All up, according to MemSize (OS/2 memory & diskpace monitoring program), there were 15 active tasks (some other programs were also loaded).

Try that under Windows! Something like that might be possible with Windows NT (a product aimed more at the network server market) but the memory requirements are even larger than OS/2's - a NT system with 16 MB of RAM requires a 28 MB swapfile (Byte, Vol 18, No 12, p.86).

Multiple threads of execution

Another aspect of user-responsiveness is the multi-threaded nature of many OS/2 programs. This is a form of internal (to the program) multitasking. For example when you load a DOS/Windows program you have to wait until the load process is finished before starting to use it. When I first start up OS/2, as soon as the Workplace Shell appears, I start selecting programs/objects while the other programs that I've designated as start-up programs are still loading.

Figure 1. Batchfile to exercise OS/2's background multi-tasking.

User Comments

Multi-threading also means that you can save a large data file in a OS/2 app and immediately continue working with the app. This is not the same as delayed-write caching (OS/2 has this as well - it's called "Lazy Writes"). Rather the program has assigned an internal execution thread to finish saving the file (usually as a lower priority task) and has returned its attention to the user's input. As far as the user is concerned the program's actions seem zippier.

Another use of a thread could be performing an auto-save based on time/keystrokes. DeScribe does this by taking a "snapshot" at the first lull in user activity based on a minimum number of characters typed (say 300) and/or time elapsed (say 180 secs) and if a lull does not occur it forces a unobtrusive snapshot before some maximum number of keystrokes (say 500) and/or time span (say 300 secs).

Flexibility

There are an exciting number of ways to operate with OS/2 v2.1:

1. Full-Screen DOS.

Generally the max amount of free memory is about 630 KB (644,864 bytes). You can easily bump this up to 724 KB free memory but it seems pointless - why increase the size of DOS low memory when you can load any large TSRs, like Sidekick, in a separate DOS session?

2. Windowed DOS session.

Font size can be changed. You can switch between the two types of DOS windows with Alt-Home.

3. VMBs (Virtual Machine Boot).

Also referred to as "Native DOS" sessions. Full-screen character-mode. The version of DOS that comes with OS/2 v2.1 is DOS v5. However you can create one or more image files from DOS boot disks from v2.0 to v6.2 if you have these versions and specifically need to boot this DOS. These image files are stored on the HD and boot almost instantaneously and you can still switch between your other OS/2, DOS and Windows sessions. I've got a MS-DOS v6.0 image file but have never needed to use it.

4. Full-Screen character-mode OS/2.

The only immediately apparent difference between this and a full-screen DOS session is the different prompt (they could be set to produce the same prompts but that would be confusing). Most OS/2 commands are the same or are improved (e.g.. you can use "DEL file1 file2 etc." or "DIR file1 file2 etc."). Oh, one other characteristic of any OS/2 session: the 640 KB barrier isn't there anymore.

5. Windowed character-mode OS/2.

Font size can be changed.

6. OS/2 PM program session

(Presentation Manager).

Graphics mode and windowed.

7. The Full-Screen equivalent of Windows v3.1 (WIN-OS/2).

The core code comes from MS (thanks Microsoft!) under the cross-licensing agreement that existed between MS & IBM so Windows compatibility is very good. Comes with Program Manager, File Manager, Control Panel, Write and all your other old favourites(?) except for the PIF Editor (not needed).

8. A single app full-screen WIN-OS/2 session.

9. A single app windowed WIN-OS/2 session amongst other types of sessions on your Workplace Shell desktop. Referred to as "Seamless Windows".

There are a number of variations to how you can run Windows applications:

Standard mode;

Enhanced Mode;

Shared Session (Multiple Win apps in the same WIN-OS/2 session

Pro: only one copy of WIN- OS/2 is loaded -

Con: an aberrant Win app can possibly crash all your other Win apps (just like the real thing! But it won't bring down your other OS/2 and DOS sessions));

Single Session

Pro: Can't bring down other WIN-OS/2 Single and Shared Sessions

Con: Loading separate copies of WIN-OS/2 means extra start time and chews up more memory.

HPFS

The High Performance File System has some obvious advantages:

- * Much quicker performance than the FAT (File Allocation Table) file system on partitions of 60Mb or greater.
- * Fragmentation Resistant.
- * Long Filenames (up to 254 chars) are supported. Filenames can have spaces.
- * DOS & WIN-OS/2 programs can transparently access it if OS/2 is running.
- * Smaller cluster size (512 bytes) so there is less wasted space particularly with a lot of small files. Note that there is also 512 bytes of overhead per file so a 1 byte file consumes 1 KB of HPFS HD space, a 700 byte file consumes 1.5 KB, a 2.4 KB file consumes 3 KB, and so on.

The disadvantages are:

- * HPFS chews up 500 KB of RAM.
- * If you boot up from DOS (say in a Dual Boot or Boot Manager Scenario) you won't see HPFS drives. Note that there are a number of programs that claim to provide the ability to read HPFS after booting from DOS and the ability to write to it is "coming". I haven't tried these yet.

Machinery required

I purchased a machine specifically to run OS/2. My original machine (386DX/25, 8MB, 65MB & 104MB

RLL VC HDs, EGA & Herc) was not a suitable platform. The new machine is a 486DX/50, 16 MB, 2 x 245 MB IDE HDs, 4 MB Teckram DC-680 Local Bus IDE Caching controller, Tseng ET4000 Local Bus SVGA).

This combination has been very stable. I operate in 800 x 600 x 256 video mode and the video card is not fast enough for my liking in windowed OS/2 prompt sessions. I tried a Cirrus Logic 5426 card when the ET4000 failed but, while faster in some areas, the card caused many Trap C's on my system. I tried many variations, reinstalls and APARs (fixes from IBM available from many BBSs) but I could never get stable operation in DOS sessions. (I believe this card works well in many other OS/2 machines.)

Editor's note: Experience and the BBS Tech Echoes suggest that many VESA-standard cards become unstable when used in a 50MHz local buses, even with a wait state thrown in.

I also had a loan for a few days of a MegaEVA Tseng ET4000/W32i Local Bus video card. This card comes with 2MB of video RAM. I used this with beta device drivers for a Hercules Dynamite card (same chipset). These worked very well although there was a small bug in Windows apps (the original background wasn't always restored when a menu was closed). It was easy to avoid this bug (most menu commands have hot-key equivalents) and I rarely use Windows apps anyway.

The W32i card was very quick and reasonable priced at about \$430. It easily coped with 800 x 600 x 256 graphics and if I had a 17" monitor I'd be tempted to use it in 1,024 x 768 x 256 mode. With this card the need for more performance wasn't an issue. See Figure 2 for a comparison of its performance with the ET4000 LB card. (Unfortunately I could not get an ISA ET4000 to compare as well).

The problem with the W32i card was heat. Although it came with a heat sink bounded to the top of the ET4000/W32i chip it was running hot enough to be uncomfortable to touch for more than a few seconds. I did not feel safe running it without supplementary cooling (say an extra fan on it). Paul Marwick tells me that the W32 version runs much cooler and is fast. The only documentation I saw for the difference in performance between the two versions was a sticker on the front of the W32i box claiming it ran 60% faster in Windows applications than the W32.

So I'm back with a ET4000 LB at the moment, but I'm thinking about supplementary cooling...

Advice for someone buying a new machine for OS/2

Only buy from a dealer who has had a lot of experience with OS/2 and makes an effort to get the latest device drivers available from most BBSs specialising in OS/2. I brought from HH & BW.

A cost-effective machine would be 486SX-33 with 8 MB, 245-340 MB HD and ET4000 W32 card.

Test	ET4000	ET4000/W32i	
MS SRCCOPY	6,887	6,896	(1.0)
MS PATCOPY	7,665	24,881	(3.2)
MS PATINVERT	4,817	25,163	(5.2)
Single Horizontal	6,089	5,940	(1.0)
Single Vertical	3,764	5,867	(1.6)
Single Diagonal	1,782	2,236	(1.3)
Poly Mixed	4,568	6,980	(1.5)
POLYGON ALTERN FILL	3,807	16,914	(4.4)
ExtTextOut 16 pt Sys	2,430	10,537	(4.3)
ExtTextOut 21ptTmsRmn	3,086	9,004	(2.9)
Graphics WINMARK	5,349	16,776	(3.1)
Graphics Benchmarks from PC Mag Graphic WinMARK v3.11			
Values = Pixels/Sec x 1K. Figure in brackets is ratio.			
Tests performed under WIN-OS/2.			

Figure 2. The graphic performance of the ET4000 LB & ET4000/W32i video cards.

I bought a DX/50 machine and it is more difficult to get local bus cards that will work at this high speed. The VESA LB standard stops at 33MHz. DX2/66 LB cards work OK because the external (LB) speed is 33MHz.

If you can afford it, budget for more RAM. I use a swap file of 1-2 MB. With 8 MB of RAM installed I'd probably need a 10 MB swap file and I know someone with an 8 MB system whose heavy usage cause the swapfile to regularly exceed 20MB. OS/2 is a virtual-memory system (disk space is considered a transparent part of the memory pool) but accessing RAM is always much faster than accessing a mechanical HD.

I would advise against purchasing a CD-ROM and sound card combination for OS/2 at the moment. OS/2 product integration lags behind Windows 3.1 support. PC Magazine recently compared 45 multimedia systems (Vol 12, No 18) under Windows 3.1 and the level of multimedia performance was judged POOR to FAIR in most cases. It appears that switching to multimedia at the moment may be a mistake. Wait until the technology has matured. If you just want to use a CD-ROM as a data source and not as part of a multimedia system you may be able to get acceptable performance now.

With 14-15" monitors 800 x 600 resolution will probably be the highest usable resolution for most users. The character size with 1,024 x 768 is too small unless you have a large screen. Ask the dealer to set up your OS/2 system for this resolution and carefully inspect the screen quality with the VERY monitor you will be buying before handing over your money. Monitor quality varies greatly so it's important to get one

you'll be happy with.

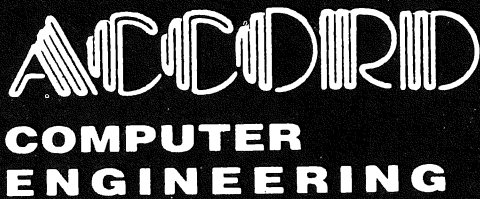
Spend some time using the mouse to see if it works the way you like. Unfortunately most mouse inadequacies only show up after some period of use.

Conclusion

Learning your way around OS/2 v2.1 and the Workplace Shell requires some time. The reward is that you will be amazed at the flexibility available. For example, during the course of this article I used the shared clipboard between WIN-OS2 & PM programs to transfer data to both the DeScribe word processor and to OS/2's *E.EXE* editor. Whether a program's clipboard and DDE (Dynamic Data Exchange) is "public" or "private" -i.e. available to other programs - is individually configurable and is typical of the flexibility of OS/2.

Combining the features of DOS & WINDOWS with the OS/2 prompt (being so DOS-like makes it easy to pick up), the power of 16 & 32-bit OS/2 and PM apps, REXX, HPFS and the ability to adapt to other IFs (Installable File Systems) as they evolve, the potential of working easier using objects in the Workplace Shell and the robust multitasking gives OS/2 some unique advantages over competing systems.

The final word, however, will be left to Bill Gates: "OS/2 is destined to be a very important piece of software. During the next 10 years, millions of programmers and users will utilize this system" (foreword to "Inside OS/2" by Gordon Letwin, Microsoft Press, 1988). How prophetic! Bill's always had a nack for seeing into the future.



ACCORD
COMPUTER
ENGINEERING

12 CRESTVIEW STREET
KENMORE Q4069 AUST.
PHONE: (07) 8784076
FAX: (07) 8784078

SYSTEM REPAIRS UPGRADES FREE EVALUATION 2ND HAND PARTS

SYSTEM: AT 1Mb HDD FDD DOS Col 14" 0.31Mon and S/w...\$599
MONITORS: SCGA 14" 0.31 with card \$179, USED EGA \$200,
HDD: MFM: 20Mb \$159, 40Mb \$239 IDE: 40Mb \$239, 260Mb \$485
M/BOARDS: XT with 640k \$49, 286 frm \$59; 386/486 U/G call
MODEMS: 14.4kbs d/f & SW V42bis Ext: \$499; 2400 data/9600 Fax
& S/ware Int. \$159, Ext.\$229. **MISCELLANEOUS:** CPB80 9 Pin
Printer \$100, Mini Tower Case \$110, 1.44MB Drive \$90 1.2MB
Drive \$110, Keyboard \$49, XT FDD cont 1.2/1.44 \$49, Mouse
\$25, 4xFDD Cont for XT/AT \$89, 3 Com 286 Novell/Ethernet
Workstation (EGA) \$399; **MEMORY:** Simm/Sip 1Mx9 \$99; 8087 \$49,
80287 \$69, 80387x40 \$159
DISKETTES: 5.1/4 360k \$5; 1.2M \$9; 3.1/2 720k \$9, 1.44 \$16
Quantity discount available. All above prices include tax.

UPGRADE AND SAVE ENHANCE YOUR COMPUTER POWER

News from Associated

SUNSHINE COAST COMPUTER USERS GROUP

Clubs

The Sunshine Coast Computer Users Group meets on the 1st Monday night of each month. After the meeting formalities are over, a presentation is conducted on a particular software package or computer topic. Most of which are guest speakers working in the computer industry. SCCUG welcomes any BRISBUG members either, lost, or on holidays, to join us.

Maybe you'll see us at one of your meets, we hope to regularly keep in touch in 1994.

The following history of our club has been compiled by our founding president - Ernie Camilleri.

From the beginning - and for the record:

I guess SCCUG (Sunshine Coast Computer User Group) started in my mind long before I placed that fateful ad in the newspaper back in 1988.

After getting my first DOS based machine from a dealer who shall remain nameless (but we know who you are, don't we?) and experiencing sheer

frustration at not being able to use it with the same ease (*wash your mouth out Ernie*) as I did my ever faithful C64 (that's Commodore 64 - not the car). I decided it was time to talk to somebody/anybody that could/would help me. Now that sounds easy enough doesn't it ?? Well *not on your nelly*; do you know how many people I found out there with the same problem as myself? Zillions - millions - heaps - a lot - quite a few - some - many - at least dozen - Ok, so there was only two of us, but that's beside the point. There honestly were a lot of people out there in the same predicament as I was at not being able to communicate with the stupid machine, let alone with anyone of the human gender, whenever I had a computer - related problem.

I'm off to see the wizard - the wonderful wizard of !!! dah dah dah daaahhh...

In October 1988, I placed an ad in the Sunshine Coast Daily asking anybody that felt the same way as I do/did/does, and was interested in starting a computer club to ring me. That ad generated a lot of interest (especially the bit about the strip show). Our first unofficial meeting was held in one of the rooms at the Caloundra Civic Centre. The centre had an understanding manager back then and we did not get charged for the use of the room. About 13 - 14 people showed up which is pretty good, even by today's standards. We all introduced ourselves and told our own (horror) computer stories and decided that there definitely was a need for a DOS based computer club on the Sunshine Coast. We must have been talking for a while before anybody noticed the time (10pm) and someone said that they would kill for a cup of coffee. Thus came tea, coffee and bikies.

Who want's to be a volunteer??? - I don't.

The first official meeting was also at the Civic Centre on the 5th September 1988. We had a democratic election and as usual nobody wanted to stand

Welcome
to my
nightmare



Regular visitors to Brisbug, SCCUG President, Ernie Camalleri, Secretary, Kerri Pleml, and Sysop, Brad Ainge.

✓ A short history of the Sunshine Coast Computer Users Group

✓ Rockhampton QRI Computer Users Group prospers

for anything (what a surprise) but we all wanted to belong to the club. So yours truly was suckered, eh! sorry, nominated for 'El Presidente' and 'el stupido' (that's also me) said "ok amigos".

We are a band of merry persons.

As far as my memory (heh heh) will let me recollect (which is only about 4mb nowadays) the founding members were myself, Joy Woods - Treasurer (only because she loved to play with money and could manage it better than Scrooge McDuck). Johanna DeMain - Secretary (we have had a few since then) and that was the founding Executive Committee. Joy held that position in the club's interest until last year when she finally decided to retire (on ya Joy we all still luv ya and will always remember you as our 'First Lady'). Later came young Jason Trump who started our Newsletter and Bulletin Board. (I wonder what happened to young Jason?)

You say it's easy, and I say it's Elsa.

So you think getting a club up and running is easy? Think again Leroy, it ain't! Five years ago we set the membership rate at \$20.00 and it has stayed the same to date. Five years ago we designed and printed membership forms, with David Lea's help, we drafted the Club's Constitution, set meeting dates, drew up the meeting format, talked to Caloundra High School about a venue to hold our meetings. (Room C6 was born) Started the Software Library and appointed Al Green as Librarian - a job he set up and carried on until late last year. (thanks Al)

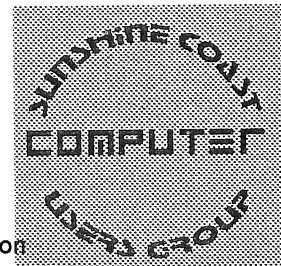
When you gotta go... you gotta go...

After what seemed about a lifetime, (actually it was about two election's worth) unfortunately I had to resign as President due to work pressures, and Daz Picton stepped into the breach for me. If it wasn't for Daz and his committee we would not have a club today. Maybe you can take over again real soon Daz that is after you have a rest.

We've only just begun.

So now you know nearly as much as I do about the history of SCCUG with one exception and that is the founding members in their quest to establish this club/your club/ my club/our club, have experienced and endured every conceivable type of emotion imaginable with the exception of lust. In other words it was bloody hard work, and if it was up to me to do it again I probably would - or would I?

Ernie Camilleri



Rockhampton QRICUG

The Rockhampton QRI Computers Users Group Inc is growing, and has become a Corporate Member of BRISBUG just recently. The group boasts more than 30 members with 7 joining at the last Workshop. Workshops are held every month from 10am to 3pm, and everyone is welcome. After the workshop, a short meeting is held.

The next two workshops will be held on Saturday February 19th and Saturday March 19th, 1994, both 10am - 3pm, at the (QRI) Queensland Railway Institute Hall, corner of Denison and Stanley Streets, Rockhampton.

At the January workshop, I (VK4CNQ), took my Amateur Radio Packet equipment and along with David Christmas (VK4DJC), we provided a demonstration on file transfer via the VK4WIR BBS and keyboard to keyboard communications, without the telephone connected. Between the two stations, we created a deal of interest, so much so that the group would like the demo put on again. Some members found that computers can do more than just play games! Next workshop we hope to demonstrate Amateur TCP/IP.

With some of our local computer companies thinking of joining and Cut Cost Computers and Rockhampton Computer Repairs having joined, the QRI Computers Users Group will expand. Interested computer users can take advantage of workshops, and may be surprised with knowledge gained so easily. From games to power programmes, you'll find someone who will have a go to help you.

Nick Zingales

Minutes of the 1993 Annual General Meeting

held 16th January, 1994

Recorded
by Chris
Raisin -
Secretary

The Annual General Meeting of Brisbug started immediately after the closure of the January 1994 General Meeting of members.

The President, Lloyd Smith opened the proceedings by welcoming everyone, both members and interested on-lookers.

First on the Agenda was the presentation of various reports.

There were two President's reports, one by the immediate past President, Ron Lewis, who was in office from 17/1/93 to 20/6/93, and one by the current President, Lloyd Smith (20/6/93 to 16/1/94).

After these in depth reports were read aloud, the Secretary moved that the minutes of the Annual General Meeting held on 17/1/93 and published on page 43 of the February, 1994 issue of Significant Bits be accepted without amendment. Max Kunzelmann seconded the motion and it was carried without dissent.

The Auditor's report on the Brisbug's Financial Statements for 1992/93 was then delivered verbally by the Treasurer (Max Kunzelmann), and members were advised that a full print of both the financial statements and the auditor's report would appear in the February 1994 issue of our magazine (*see centre lift-out, Ed*). The Treasurer moved a motion that the auditor's report on the financial statements be accepted. The motion was seconded by Paul Marwick and the motion was carried again unanimously (thereby accepting the financial reports).

A motion from Max Kunzelmann to retain D.C. Neilson & Co. as the auditors for BRISBUG was seconded by Ron Kelly and passed by the members.

The last act of the current President for 1993/94 was to call for a vote on a motion put by Graeme Darroch at the December, 1993 General Meeting (and seconded by Chris Raisin on that same day). The motion was "that Member # 8 (the family member Peter and Helen Grimes) be awarded Life Membership to Brisbug for their devotion and hard work for

the Group over many years". The vote was spontaneous and overwhelming -affirmative! There was much applause, and Peter and Helen accepted the inscribed and framed certificate with deep appreciation. Peter spoke briefly and (on behalf of both Helen and himself) thanked the club for the honor and wished it continuing success for many years.

The President then stood down from office, along with the rest of the Management Committee in preparation for the elections for 1994/95.

Bernard Speight (retiring SIG Coordinator) briefly held the reins to ask the Secretary for the names of nominations to the position of President for the coming term. There being only one nomination, Lloyd Smith was duly re-elected un-opposed. Lloyd resumed the role as chairman, thanking Bernard for his help in managing the "in-between" period.

The "new" President then asked the Secretary to announce the nominations for all the other positions on the Management Committee for the coming year. Since there were only 8 other nominations (one for each position!) each person was automatically elected (no voting!). Lloyd introduced each committee member to the meeting:

Vice-President:	Graeme Darroch
Secretary:	Chris Raisin
Treasurer:	Max Kunzelmann
Membership Secretary:	Jan Ausburn
Development Director:	Carl Planting
SIG Director:	Dulcie Haydon
Education Director:	Mark Mullins
Magazine Director:	Ron Lewis

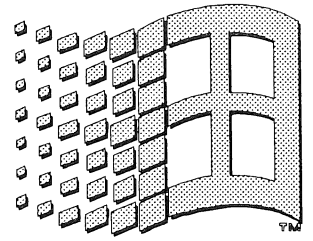
All other positions are appointments made by the Management Committee and will be announced as they are made.

The meeting welcomed back the old faces plus the three new ones with much applause.

And so endeth the AGM for 1993 at 1-58 p.m.

Lloyd Smith then handed over to the Meeting Coordinator to introduce the guest speakers for the afternoon, Applied Micro Systems. ■

Windows Watch



An Occasional Column, compiled by Ralph De Vries

Thought for the Month

As mentioned two months ago, I am a member of Microsoft's *Communiqué* support scheme. For an annual membership fee of \$40.00 I have access to free telephone and fax services, and can also obtain upgrades at reduced prices. As I own several Microsoft products I find this service very beneficial.

Without going into details, I have had dealings with quite a few other local software companies, and have never received the same level of support as that received from Microsoft. Because of that support I tend to favour Microsoft products. As an instance I gave up using two major word processors, because of inadequate support by the local distributors. I now use *Word for Windows*.

In a nutshell, if available, I will choose an *equivalent* Microsoft product, because of the level of support offered by this company, and I know of quite a few Windows users who share my view. Other software distributors please take note. *Disclaimer:* this column is *not* sponsored by Microsoft!

Some New Products

Last December and this month are 'upgrade' months. In my case I have limited myself to the 'update of the upgrade' of CorelDraw, the new Dos 6.2 'stepup' upgrade, and Word 6.0 for Windows.

After a prolonged series of phone calls, letters, and faxes to one of the Corel distributors, I managed to obtain, at long last, the revised version of *CorelDraw* (Version 4.00 B3) on CD Rom. I had previously received this update on disk but, as I wanted to run CorelDraw from the CD, I requested the update on CD-ROM. The update cures some of the most bothersome bugs, such as certain major problems with import- and export filters, but I have found further problems with the *PhotoPaint* and *Trace* modules. If ever there will be a CorelDraw 5, I'll think twice about upgrading; considering the hassles I had with this particular distributor. This is no reflection on the program itself, which is extremely powerful, although I do wonder how many users actually use *all* the modules sup-

plied with CorelDraw. I should imagine that a version containing just the Draw, Paint and Trace modules would be sufficient for 99% of all users.

My *DOS 6.2* 'stepup upgrade' (for Dos 6 users only) installed without any problems at all. It's nice to know that SmartDrive now caches my CD-Rom drive as well. In my humble opinion this is a very worthwhile update. I shall leave it to our DOS experts to describe 6.2 in more detail.

What to say about *Word 6.0 for Windows*? I have used this word processor for a few years now, and have always found that certain aspects of the program are illogical, to say the least. My main gripe is with Headers and Footers and Page Numbering. Logic tells me that every aspect of these functions should be controlled by a single menu item. Yet even in Version 6.0 we find that we have to go to the View menu, The Insert menu, and the Format menu to access these functions. Because of the new menu options these features are now easier to use than in V 2.0, but I find them still inconsistent. Perhaps Version 7.0 will address this problem?

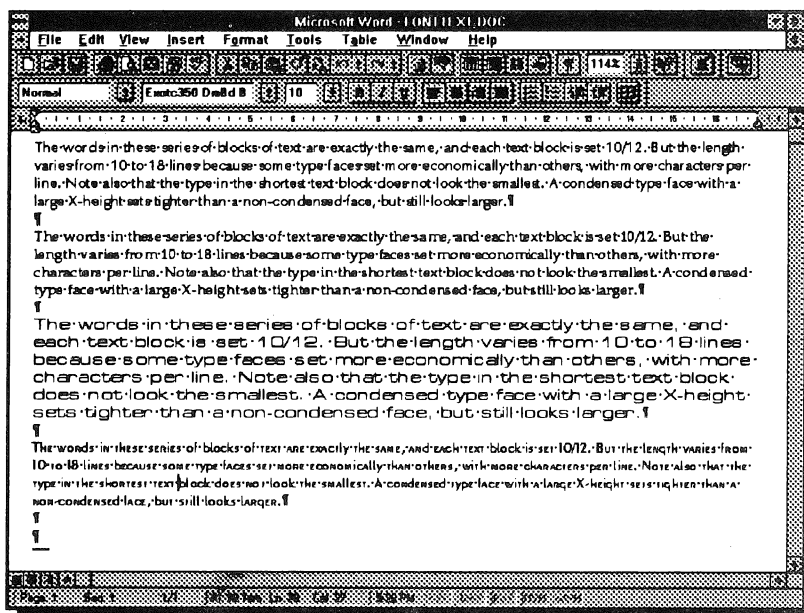
My second gripe, which has not been addressed yet, is graphics, frames and borders. I find the total concept of incorporating graphics in *Word* convoluted, to say the least. Perhaps MS should look at some of their opposition products to pick up some useful ideas.

Last but not least, do we have to have a 'normal view' and a 'page layout view'? The normal mode is far from WYSIWYG - just try it with graphics or the new Drop Capital feature, and you'll see what I mean. Perhaps it's time that MS discards the normal viewing mode.

Now that my gripes are out of the way I have to admit that Word 6.0 is really a very good upgrade! I can thoroughly recommend it to existing *Word* users or those amongst you who are thinking of changing to a more powerful word processor. This is largely due to the expansion of the Help system, which now has features which resemble Cue cards, such as used in *Access* and *Publisher*. We

also have *Wizards*, a form of pre-programmed Macros, which assist in page and form layout.

Improved design means that basic page layout is now controlled by the **File** menu rather than by the **Format** menu, which brings it in line with some other MS products. To activate printing now means pressing the **Control/ P** combination, rather than **Control/ Shift/ F12**, which was strange, to say the least.



The **Edit** menu has acquired a multi-level *undo* option, which I find quite useful.

The **View** menu now offers a Full Screen viewing mode, which allows for fast toggling between full screen and a screen with all the rulers, icons, etc. On the bottom of the page one can now click on an icon to switch between Normal, Page Layout, and Outline views. The Header and Footer option of the View menu now come up with its own miniaturised icon bar.

There are several minor updates to the **Insert** menu, but it's the **Format** menu that offers most new features. The Column option is now more flexible, and allows for columns of different widths on the same page. The Change Case option was and is available by pressing the **Shift/ F3** combination, but can now also be accessed from the Format menu. New is the Drop Cap feature, but this can only be previewed from Page Layout mode. I find the AutoFormat and Style Gallery options quite useful. At times a document written in a hurry can be quite a bit improved in appearance by applying the AutoFormat option, or by previewing the different styles in the style gallery.

Also on the Format menu is the new *Drawing Object*, but why in this menu? This new Drawing module with its own Icon bar is a substantial improvement on the original Draw module, but this is still available if you

access the **Insert** menu! Dear, oh dear, Mr Microsoft, two drawing modules? That's overdoing it a bit, wouldn't you agree?

The **Tools** menu now offers the new AutoCorrect option to correct 'running' spelling errors, which is great if you know what all your regular errors are. A bit of a waste of time if, at each word processing session, you come up with a new series of spelling errors, as it will only correct those that you have 'programmed' into the editor. A WordCount option from the Tools menu is a useful addition.

These are some of the more obvious improvements, all of which make Word an easier program to use. It could be argued that the improvements to this version are mostly cosmetic, rather than real new features, and this would be a valid criticism. However, Word 6.0's ease of use is in itself sufficient 'raison d'être' for its existence.

Some complaints have been heard about this version's speed, or rather the lack of it, compared

with the earlier version. On my 486 DX-50 I haven't noticed any obvious slowing down, but on slower computers this may have to be taken into consideration. (If you are working with 4 Mbytes of memory, increase it to 8 Mb, as this appears to make the most substantial difference in performance, and not only with *Word* either!) More serious are the allegations in *PC Week* of 15th Dec '93 about 'bugs' in this new version. Apparently, both the new *WordPerfect 6.0* and *Word 6.0* will both have new maintenance fixes early in 1994. So what's new?

The Works

Just released is *Works for Windows*, version 3.0. This new version offers quite a few improvements in the word processor, spread sheet and data base modules, and now also has a communications module. All the Microsoft goodies such as *cue cards*, *templates* and *wizards*, are in place to help the new user find his/her way. The word processor has 'imported' several features from *Word for Windows*, and, at long last, now also supports columns. *Works* also contains the *Clip-Art Gallery* from Publisher 2.0 (and the new *Word 6.0*, of course), which is a great way to catalogue and preview your clip art. Of course *WordArt* and *Draw* are also part of the package.

A curious omission from the word processor module is the inability to insert another text file into an existing document. The only way to do this is by opening

Model Number	Model Name	Units	Avg. \$/Unit	Rev. (\$000)	Unit Margin	Total Margin
27	Bomber	890	\$223.30	\$198.92	\$5.20	\$4,628.00
PT3	Swooper	1280	\$130.30	\$192.64	\$5.75	\$7,360.00
P15	Hawk	920	\$298.30	\$274.62	\$3.87	\$3,560.40
B32	Falcon	1380	\$165.30	\$261.49	\$2.90	\$4,382.00
P121	Paraglider	800	\$330.30	\$280.40	\$6.74	\$5,392.00
Total						\$25,522.40

Model Number	Model Name	Units	Avg. \$/Unit	Rev. (\$000)	Unit Margin	Total Margin
27	Bomber	1,068	\$245.85	\$262.37	\$4.68	\$4,998.24
PT3	Swooper	1,336	\$165.35	\$224.28	\$5.18	\$7,948.80
P15	Hawk	1,104	\$328.35	\$362.30	\$3.48	\$3,843.23
B32	Falcon	1,896	\$182.05	\$345.17	\$2.61	\$4,948.56

For a mere \$130.00, this is now the ideal program for newcomers to computing and Windows. After all, at less than \$35 per module, it even makes shareware look expensive! If you find programs such as Word or Excel overkill or too daunting, you can save yourself a lot of money and many hours of study by investing in the Works. It's of course easy enough to say that these modules aren't as versatile or powerful than some of the state-of-the-art stand-alone packages, but this is to ignore the huge difference in

the other document or text file, tile them if need be, and then either cut or copy the required text. This is all the more curious when one realises that one can insert either a data base-, spread sheet- or clip art file into an existing file. I consider this omission the only real serious weakness of the program.

The data base, although still a flat-file database, has had a face-lift and now allows for the incorporation of graphics - great for personnel records or real estate catalogues of houses.

The spread sheet part has also borrowed more from Excel (it offers a total of 76 mathematical functions), and the charting module has as well been expanded, compared with the earlier version of Works.

The new tele communication module could offer serious competition for some of the shareware- and commercial telecommunication programs. It will automatically set the modem's parameters, so no more worries about baud rates, parity and stop bits. While on line, you can capture screen text and send it to a word processor. It supports the standard protocols such as Xmodem, Ymodem and Zmodem, and also emulates several terminal modes such as ANSI, thus covering most modem users' basic requirements. There's also a 'script mode' to facilitate establishing regular modem connections. Make no mistake about it - this module is a lot more powerful than the despised Terminal program, which comes with Windows. If you are only an occasional modem user, this module will suit you very well indeed.

Of course OLE 2 is supported, which means that you can interchange information quite easily between all four modules.

price. And why pay many hundreds of dollars for one of the big-name packages if you are only an occasional user of this type of software? I foresee substantial sales for this new version of the Works.

Resources

Have you noticed how, in software reviews in commercial magazines, they hardly ever mention the resources used by the particular program under review? Here are a few examples of resources used and released by some of the programs which I use:

Program	Used (%)	Returned (%)
Word 6.0	17	15
Quicken	6	6
CorelDraw 4.0	10	9
Corel PhotoPaint	20	20
ProcomPlus/Win	4	4
Publisher 2.0	9	9
Access 1.1	7	7
BeckerTools Shell	7	7
Solitaire	3	3

Notice the wide variation in the use of resources. An item like the BeckerTool shell should, at most, take only a few percent of your available resources. You may find that certain other proprietary shells are also very resource hungry. Note that the above figures are only based on opening the programs in question and not on running the programs. You may be surprised how running a program will decrease your available resources even more. In practice it means that, if you open three or four major programs, you will soon use up all available resources and then you are in real trouble.

It's equally important to find out the percentage of resources available to you when you close an application. In theory all resources should be returned to the user when you close an application, but regrettably, this is not always so.

Note for newcomers to Windows: To find out the percentage of your resources which are available to you, you go to Program Manager, select *Help* and then *About Program Manager* - this will give you the available percentage.

CD-Roms

Microsoft's new *Art Gallery* contains some 2000 colour reproductions of the London National Gallery collection. You will have to take their word for it, as I haven't counted them. This type of multi-media product requires a CD-Rom player (of course), as well as a sound card and a video card which supports 640 x 480 x 256 colours. The last item is a must, as the program will only run full screen in this particular resolution. In my normal working resolution of 800 x 600 x 256 colours the *Art Gallery* sits in the middle of the

well known Van Eyck picture of the Arnolfini Marriage is a typical example of this. Most detail is totally lost. I captured this screen image to the clipboard and then imported it into ZSoft's PhotoFinish, where I managed to 'lighten' the picture quite a bit. As an aside, owners of colour printers can have a ball, printing out these 2000 odd pictures, but most pictures need extensive 'editing' if they are to be printed out on a black and white printer.

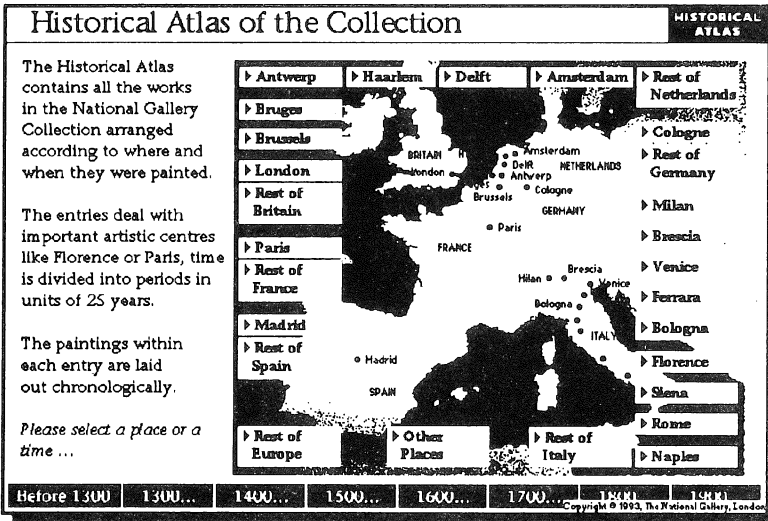
At \$99.00 (\$69.00 for the educational edition) it represents reasonable value, although for this sort of money you may also pick up a good art book on the National Gallery collection - take your pick!

The Chicago Project

They just cannot resist it. I am talking about the American magazines who keep on having little 'peeks' at 'Chicago', which is the project name for the next version of Windows. (At this stage it's not even certain if it's going to be called Windows 4.0.) This new version of our favourite (!?) operating system is still in its early 'alpha' testing stages, which means

that the so-called 'beta' testing phase hasn't even started yet. In practical terms this means that the new version of Windows is still a long way away from release, so it's really a bit premature to write about something which can be changed in a myriad ways.

Having said this, it's still interesting to take a peek at what's round the corner, and the Jan '94 issue of the *US Windows Magazine* has quite a substantial preview. Yes, it does look a lot more like that 'other' operating system, namely OS/2 2.1, or the Mac for that matter, as we now have *fold-*



screen and cannot be re-sized to fill the whole screen. This isn't good enough Microsoft! I expect all your programs to adjust automatically for the preferred screen size, be it 640 x 480, 800 x 600, or 1024 x 768. Yes, I know we are dealing here with memory-consuming graphics, but having to re-boot into another screen resolution is a pain to say the least.

Having got that off my chest, I must say that I think that *Art Gallery* is probably fine for secondary school art appreciation classes, because of the sheer volume of this collection, and the way the different categories are set out on this CD. Regrettably, though, I find that a fairly substantial percentage of the colour reproductions is suspect, to say the least. Often detail is 'lost' (too dark), or the colour is biased towards the yellow & red part of the spectrum. The very

ers on the desktop, which are roughly equivalent to present-day directories. However there are also a certain type of icons to be found on this desktop which represent data files. Let's hope that these will now be automatically created when we save a document or graphic, etc. Yes, there's also now a 'recycle bin' icon, which you may care to call a trashcan or shredder; some users find that they cannot live without one of these things, but I have always found them to be rather superfluous.

DOS has definitely gone. In its place we now have a 32-bit operating system kernel, hence good-bye to extended and expanded memory, etc. etc. - and about time too! Yes, we still have a config.sys and an autoexec.bat file, as these are required to set the path and configure device drivers, but, once that is done, it's back to graphics mode and icons, etc.

I don't think that there's anything more to be gained by listing supposed features of Chicago, which may or may not see the light of day. However one thing is certain: you will probably want to upgrade your computer! For a start 8 Mbytes of Ram will probably be the minimum requirement to run at speed, and the faster your computer's main processor, the better. Speaking for myself, I won't waste too much money on desktop 'enhancements' such as Nortons or PC Tools for Windows (or Dos for that matter), which, at most, will only have a life-span of 12 months or so. In the meantime back to Dos 6.2 and Windows 3.1...

SHAREWARE

Following are the shareware recommendations from the Jan '94 issue of *Windows Magazine*:

ClipMate 2.0: With ClipMate, you can capture items from Windows' Clipboard and save them for future retrieval. A changing title bar lets you access features like PowerPaste, Magnify and ThumbNail View. You can also drag and drop documents into ClipMate without opening applications.

Drag And View 2.0: View the contents of files quickly, without running the programs that created them. Drag And View lets you choose among 24 file formats from popular word processing, database, spreadsheet and graphics programs. You can also open multiple windows and search for text, cells or records.

Invoice-It 2.08: This program lets you generate professional invoices. Invoice-It shows you unpaid invoices, gives you the total outstanding amount and lets you mark them when paid. Save invoices as ASCII-delimited or dBASE-compatible files; print them using any installed font.

More Control 2.0a: Customize Windows with this Control Panel add-on. More Control gives you access to many settings in WIN.INI and SYSTEM.INI that are not found in the Control Panel dialogs. Among the settings you can change are icon title fonts the color of help file text and the alignment of drop-down menus.

SecureGroup 1.0: Protect your Program Manager groups with passwords and set restrictions to Program Manager's functions with SecureGroup. This utility lets you choose which groups you want to protect and gives access rights to only those users and user groups you specify.

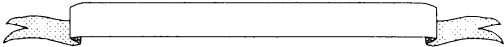
Voodoo/Assassin a.01: This utility helps you share resources by temporarily swapping out one application (such as a fax program that runs continuously) and starting a second application (such as an e-mail package), with the option of resuming the first application when you exit the second.

Windows UnArchive 2.22: Windows UnArchive extracts and decompresses files from ZIP and ARJ format and archives 60 to 90 percent faster than Windows UnZIP (which has been discontinued). With this utility, you can try out programs before downloading them and even multitask while unarchiving.

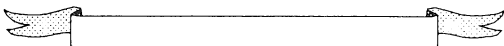
WinMatch 1.01: Compare old and new versions of text files with this MDI (Multiple Document Interface) application. Arrange files vertically or horizontally and view them with synchronized scrolling. Toolbar buttons help you jump back and forth. Choose split or composite viewmg, and full or abbreviated listings.

WinSince 3.3: Searching for files is easier than ever with this customizable file-processing utility and program launcher that helps you find files by date, time, size or name. You can search in one directory, in subdirectories or across multiple drives. WinSince works with Windows and DOS programs.

WizManager 1.1: WizManager adds color and ease to File Manager. A color, scrollable button bar has 56 buttons and a command-line box to start programs, open files and enter DOS commands. Buttons include Print Directory, Control Panel, Associate, Select Drive, and Lock and Restore.



Next month
we hope to
take a look at
Encarta and
Windows for
Workgroups 3.11



The OS/2 Column

Paul Marwick

First, a couple of new OS/2 products (well, new as of the time I'm starting to prepare this, anyway). OS/2 with Stacker and OS/2 for Windows

New products for OS/2

The first of these products is a bundle - the standard OS/2 2.1 upgrade, plus Stacker for OS/2 in a single package. It offers the advantage of a considerable price reduction for anyone who might otherwise have to buy both products separately. Other than that, there's nothing terribly remarkable about it.

The second item is remarkable. If only for strange naming that IBM have used. I'm not sure whether it's one of their best marketing ploys, or one of their worst.

OS/2 for Windows

OS/2 for Windows is a stripped down version of OS/2. It includes all the normal OS/2 support, as well as DOS support, but does not include any of the normal Windows support that comes with the full OS/2 product. It is designed to allow users who already have Windows to use the original Microsoft Windows under OS/2.

Its main advantage is a considerable reduction in price compared to buying the full OS/2 product. As such, it offers users who might otherwise find the price

of OS/2 excessive, a chance to purchase it cheaply. So far as I can see, the ability to use native Windows under it is purely coincidental. Naming it OS/2 for Windows strikes me as one of the biggest blunders that IBM marketing has ever made. Still, at least it means that they get a useful product out at a very good cost.

I would expect OS/2 for Windows to appeal to those who have no need for Windows far more than for anyone else. I don't run Windows, and would have welcomed the opportunity to purchase a copy of OS/2 which did not include the Windows code. Others, who have a similar disinclination to run Windows software should find this a very useful alternative. Those purists who don't run DOS should also find it a good alternative - while it does still include DOS support, it's both smaller and cheaper than any other alternative, which should make it a good bet for people who have no need for DOS support.

Either way, if you don't have Windows and don't need it, or if you do have Windows already, OS/2 for Windows offers a substantially cheaper way of getting OS/2 than any other alternative at present. Especially since there is an introductory special price on it.

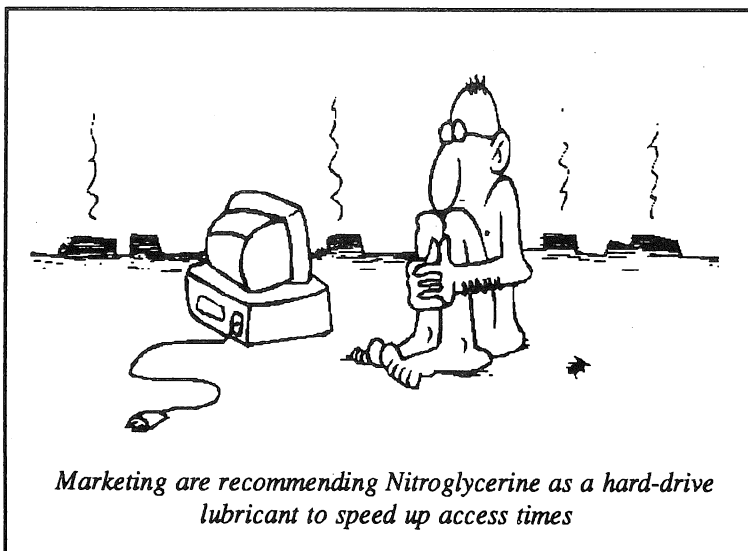
I have a copy of OS/2 for Windows, and will be installing it shortly (on a machine which already has Windows loaded). It should be interesting to see how well it runs native Windows.

QEdit for OS/2

Another new product which is worthy of mention is *Qedit 3* for OS/2. I've just received my upgrade from Semware, and so far, I'm impressed. The new version adds several important features to an already good product.

First, *Qedit* now supports the HPFS file system. This means that long file names and Extended Attributes are properly handled by *Qedit* (which was a major problem with the earlier version, since it did not understand long file names at all, and did not handle EA's at all (as I discovered when I accidentally edited an OS/2 batch file which was being used as a program object with backups turned on in *Qedit* - *Qedit* saved the file without transferring the EA's, and as a result, the next time I tried to launch that program

OS/2 for Windows is a stripped down version of OS/2.



Marketing are recommending Nitroglycerine as a hard-drive lubricant to speed up access times

- ✓ **OS/2 + Stacker**
- ✓ **OS/2-4-WIN**
- ✓ **Q-Edit V3**

NEW

object, OS/2 tried to execute the .BAK file instead of the modified .CMD file).

One interesting aspect of the EA support provided by the new *Qedit* is the fact that it can be configured to prompt you for Type EA's when saving a file. I've never been entirely sure what purpose the type EA's served, but *Qedit* can now support them, should that be needed. This feature can also be turned off, which may be even more useful. The only other OS/2 application that I'm aware of which supports type EA's is *E.EXE*, the system editor provided with OS/2.

I disliked the earlier version of *Qedit* for OS/2 mainly because it exhibited cursor run-on problems when run in an OS/2 text mode window (these problems were not in evidence when it was run full-screen). While version 3 still shows some traces of this problem, it is very much improved in this area, making it much more usable than it was in the past.

Other new items are similar to the features in the DOS version of *Qedit 3* (which, as of the time I'm preparing this, has not yet appeared as a shareware product). It adds the ability to list the contents of multiple scrap buffers, some new options in sorting, the ability to change tab settings and types on the fly, and an integrated spell checker. All of these are useful features. As in the past, there is no need to have anything other than *Q.EXE* to run *Qedit*. The spell checker consists of a compressed dictionary and a user expendable dictionary file, but neither are required to run *Qedit* itself. It remains quite small enough to carry about on a floppy disk, and is ideal for those emergency fixes. The OS/2 executable is around 70K, which makes it easy to fit on an OS/2 boot disk.

The new version seems a good deal quicker in operation than the old version did. The spell checker is quick and easy to use (pity about the US dictionary, but I guess that's fairly inevitable...). The product is accompanied by a good manual (which I may read sometime...). And, like earlier versions of *Qedit*, you can transfer settings from an older copy to the new using *QUUPDATE*.

The upgrade was quite acceptably priced, and seems well worth that price.

So far, my only gripe concerns HPFS support. While it certainly does handle both long file names and EA's, it does have one annoyance - it does not preserve case in filenames on an HPFS partition. So, if you edit a file called "Letter.Tx", when *Qedit* saves it, you'll end up with a file called "letter.tx". Probably not of any vital importance, but annoying that they got so close to full HPFS support and didn't quite make it...

The price of the *Qedit 3.0* for OS/2 also includes *Qedit Advanced* for DOS. I can't say that I've really tried the DOS version to any great degree yet (I seldom run DOS programs on my own machine, and use an unregistered shareware version of *Qedit* when I work on other people's machines), but I expect that the improvements in the OS/2 version will show just as much in the DOS version as they do in the OS/2 version.

***TSHELL* for marginal machines**

At the last Brisbug meeting, I demonstrated some alternatives to WPS which may be used. While these alternatives are generally likely to be of limited interest, they do serve to show just how flexible OS/2 really is.

One that may be of interest to people who have machines with insufficient memory to run OS/2 is *TSHELL* (recently renamed from *CSHELL*). This is a text-mode task switcher which completely replaces the WPS and PM. It is very limited in one sense - you cannot run any OS/2 PM programs at all. However, if you have a machine which is marginal in terms of its capability to run OS/2, it offers some interesting potential.

TSHELL was produced by an IBM employee and has been distributed quite widely. Using it, you can not only reduce the RAM requirements of running OS/2 substantially, you can also reduce the storage requirements of running OS/2 by quite a bit.

When installed, *TSHELL* replaces the normal graphic background with a full-screen text mode interface. This interface is split into two windows. The left window provides a menu of startable programs, while the right window provides a list of running programs.

Programs run from *TSHELL* will all run in full-screen mode, and only text mode OS/2 applications can be run (although it is quite possible to run Win-OS/2 in its own full-screen graphics mode). This limits the number of applications that can be run under *TSHELL* (specially since so many of the newer OS/2 applications are PM graphics applications). However, it does offer some substantial benefits to people who either have machines with too little memory to run OS/2 with WPS or to people who have specialised needs.

While I haven't fully tested its capabilities, *TSHELL*'s author claims that it's possible to run OS/2 with *TSHELL* on a machine with 4 megabytes of memory, with swapping disabled. This is a substantial reduction over any other method of running OS/2, and means that OS/2 should be usable for a number of people who do not currently have the necessary hardware resources to run the full package.

Installation is simple enough. Copy *TSHELL.EXE* into the root directory of the boot drive, then modify *CONFIG.SYS* so that the normal

```
PROTSHELL=C:\OS2\PMSELL.EXE
```

is replaced by

```
PROTSHELL=C:\TSHELL.EXE
```

and it's done. The next time OS/2 boots, it will be running in text mode, and looking a lot like OS/2 1.0 looked. To customise the menu provided by *TSHELL*, copy *PGMSHELL* to somewhere in the path and call it with a *STARTUP.CMD* which points to a REXX procedure with the options you want specified in it. A sample of the necessary REXX procedure is provided in the package.

Modifications to *TSHELL* can be made using REXX procedures. *TSHELL* comes with a program called *PGMSHELL* which allows you to customise the options that the *TSHELL* interface provides, adding programs and modifying settings for programs. *PGMSHELL* gets its settings from a REXX procedure which must be specified on the command line. It must also be run each time OS/2 is started (which means that the easiest way of doing so is to put a call to *PGMSHELL* into a *STARTUP.CMD* which will be run every time OS/2 is booted).

The author also provides a list of necessary files, which should allow you to either produce a customised OS/2 installation, or to go through an existing OS/2 installation and remove unneeded files.

I've been running the Brisbug BBS machine under *TSHELL* for the past couple of weeks, and have found it to be very useful on that machine. It provides greater responsiveness to the BBS lines, and leaves a good deal more free memory on that machine than would otherwise be the case.

TSHELL has one major disadvantage - difficulty starting DOS applications. While it is quite possible to launch a DOS application from the menu (left window, called the "Start Group"), trying to start a DOS session using the "start /dos" command does not work. Nor does the normal OS/2 method of starting a DOS session when a DOS executable is specified from the command line or from a batch file. However, the same author has provided a solution to this problem in the form of *STARTDOS.EXE*. *STARTDOS* allows a DOS session to be started from the OS/2 command line, and also allows each individual DOS session to have specific DOS settings set for its execution. DOS sessions can also be programmed to start in background or foreground, and to run concurrently, or to suspend the OS/2 session that launched them while they are running.

STARTDOS expects to have the name of a REXX procedure as its first command argument. In this REXX procedure, defaults for the DOS session to be started are specified. These include memory settings, video modes, etc (in fact, all the settings that would normally be available from the WPS settings notebook for a DOS program object). In this way, each DOS session can be customised to suit the application. In fact, in environments where DOS applications may be started automatically by OS/2 batch files, using *STARTDOS* instead of simply allowing OS/2 to start the application has the benefit of allowing session settings to be tuned, which would not be the case if OS/2 is simply allowed to start the session with system wide defaults as it normally does.

Beyond the reduction in memory usage produced by not loading *PMSHELL*, it is possible to reduce memory requirements a bit further (and also potentially to reduce storage requirements at the same time). *TSHELL* will initialise dynamic link libraries used by PM, even though it cannot load them. By moving (or removing) the .DLL files associated with PM, it is possible to further reduce the memory required to run OS/2. A very quick check in the directory where OS/2 system .dll files are stored shows something in the region of 3 megabytes of PM .dll files. So there's a fair bit of disk saving to be had as well. Not to mention removing or not installing all the PM applications (or applets) that are provided by OS/2 itself.

The interface provided by *TSHELL* is, to say the least, plain. It does not offer colour, nor does it offer a mouse interface. However, if you want to use the preemptive multitasking capabilities of OS/2 on a

TSHELL has one major disadvantage - difficulty starting DOS applications

machine that would be marginal for the full package, it offers the potential to do that with ease. Or, if you're not interested in the graphic user environment, *TSHELL* can offer you the advantages of robust and effective multi-tasking without the added baggage of the GUI. In some respects, it provides an environment not unlike *DESQview*, but with much more stable multitasking capabilities.

Task switching is provided by two sets of key-strokes - *ALT-ESC* will move between active tasks (the *TSHELL* interface being one of them) and *CTRL-ESC* move directly to the task list provided by *TSHELL*. Moving between the menu window and the task window of the *TSHELL* interface is done either with the tab key or with the cursor keys, and moving between items in either window is done with the cursor keys.

If you have a mouse, any application run from *TSHELL* which uses the mouse will still do so, but there is no need to have a mouse for normal task switching or program selection operations.

I can't see *TSHELL* being widely used. If nothing else, there are now too many good quality PM applications available, none of which would be usable under *TSHELL*. However, the fact that *OS/2* can be very successfully run under something like *TSHELL* demonstrates just how flexible and powerful an operating system it is.

Anyone who has used *OS/2* full-screen much will probably be aware of the lack of the cut and paste facility which *OS/2* provides in either PM or windowed text sessions. In the case of a DOS application or command line window, this is probably not a major problem, since you can change from full-screen to window and back using *ALT-HOME*. However, *OS/2* full-screen applications or command line sessions don't offer the same facility. In addition, some DOS applications will cause video problems when switched between windowed and full-screen operation. If you have to use many full-screen sessions, the lack of cut and paste can be frustrating. Given the *TSHELL* offers only full-screen, one facility that is completely lacking in *TSHELL* is the ability to cut and paste between sessions.

While sorting through some old files, I came across something which may help alleviate if not eliminate this problem. While it was produced for earlier, 16-bit versions of *OS/2*, it seems to work fine with *OS/2 2.xx*. I haven't yet tested it extensively, but so far, it has worked without causing any problems.

The program is *CLIPIT*. It loads in full-screen sessions, much like a TSR is loaded under DOS. Once loaded, pressing the hot-key combination (*CTRL-F8*) will pop up a menu which allows you to cut to its clipboard, to cut to a file, or to uninstall the program. Data placed in its clipboard can then be pasted into

any other full-screen session which also has *CLIPIT* loaded.

If you're going to use *TSHELL*, adding something like *CLIPIT* could be useful. Even if you simply use a number of full-screen applications under *WPS*, *CLIPIT* could prove useful. It seems a pity that IBM hasn't seen fit to include something similar with *OS/2* itself.

I mentioned last month that I was experimenting with increasing the size of the swap file that *OS/2* allocates on boot. These experiments have been generally worthwhile. While I'm still seeing some signs of lost memory over a period of time, they are much reduced, and the systems on which I've tried this experiment have been generally more stable and responsive than they were with the smaller default swapper file size.

I can't claim to understand the mechanism at work here, but it does seem to work quite well, so anyone finding that they are suffering the same memory loss over time might find it worth while to increase the size of the initial swapper file.

Continued from page 55

half of a new hardware technology designed to allow the prototype to design and create future generations of this revolutionary product.

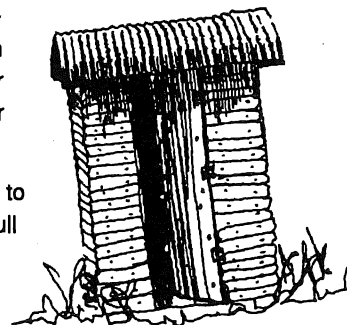
"All that's needed now is some work on another version of the Mason prototype currently in development," said a company spokesperson. "This prototype will have an output device which will double as an I/O when interfaced with the Mason Prototype. It will also provide the access through which the next generation will eventually be uncoupled from its preliminary Mother/Daughter relationship with the other [as-yet unnamed] unit, and slowly weaned to independent function."

We're excited by the prospect," he continued, "but we have a good deal of development to get through before this becomes a reality. And this is definitely NOT something we want to rush to market with. The last thing we need is a process of accidental or spontaneous self-replication before either of the prototypes is fully autonomous and capable of adequately programming the next generation of the Mason prototype."

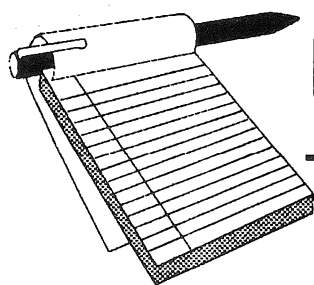
For this reason, developers have programmed a powerful incompatibility algorithm into the mason prototype which will last an approximate 12-14 years. At this point, programmers expect to see this algorithm become latent, to be slowly replaced by increasing compatibility between the two units. Preliminary contacts will not, however, take place through the self-replication I/O devices, but rather through the digital manipulators and later through the sustenance input devices.

A minimum of 25 years are expected to pass before this prototype comes up to full speed.

*Origin: The Crossroads - Chicago (312) 587-8756



Our Theoretical Research Centre is very productive despite its remote location



Consultant's Notepad

Geoff Harrod

Uninstallable software - Setting up working directories - Coping with over-long PATHs - Adding to the PATH - Japanese tutors - AutoCAD LT

Dud Floppies

There seems to be a rash of defective floppy disks in new deliveries of commercial software. The problem in all the cases I have experienced was defective spots on the media surface. If you get some software that gives "Error reading drive A:" messages during installation, it is wise to check that the problem is not due to your disk drive needing a head clean or something before complaining, as it can be quite a long-winded business contacting the supplier. The best way is to run Norton Disk Doctor, if you have it. Other diagnostic programs have an equivalent. A way to fairly quickly check the rest of the disks if you don't have any diagnostic program is to use the command

```
XCOPY A:*. * NUL /S
```

That will make it read right through every file and copy the data to nowhere. If you spell it NULL instead of NUL though, it will copy everything to a new file in the current directory called NULL and thereby waste hard disk space. It is also advisable to try the disks on another computer if possible.

Installing new software

Most software now comes with an automated installation program, and in most cases you have to use it because of the way the data is compressed on the disks. In the case of Windows programs, they also usually set up Program Manager icons and maybe a new Group. It is usually best to accept the default program directory that is offered, although you might want to use some other drive than the usual C drive. Using the maker's default program directory makes it easier to relate to the instructions in the manual, easier to respond to phone help from the suppliers if it should be needed, and easier when the time comes to install an upgrade or bug-fix patch.

Generally, they install programs in a sensibly named directory off the root, often nowadays with a more or less extensive tree of subdirectories within it. You do need to beware of using a directory name that is already used, especially with those programs that use two-letter directory names. Sometimes the install program will have been written brightly enough to warn you if the proposed directory exists or has files in it, but some-

***installation
programs rarely set
up any working
directory separate
from the program
directory***

times not. You want to avoid putting the new software in with something else.

The main point of this note is to alert users to the fact that installation programs rarely set up any working directory separate from the program directory. Usually if you follow all the defaults and go on to use the system, all the data files such as documents that you create get placed in the same directory as the program files. This is highly undesirable! It makes it harder to see all your files neatly and complicates doing backups.

Data Directories

There are many ways of organising your own data files but anything is better than having them in with the program. One way is to set up a work directory within each program directory, for data files created with that program. If you want to categorise the data files, such as by who made them or by various aspects of your work, you can make subdirectories within that data directory.

I prefer to have one \DATA directory off the root which acts as an "umbrella" for a lot of data directories. Those are named either for the program they have to be used with or the category of work or the people they belong to, as appropriate. In my own case, I mix rationale a bit. For instance I have a directory called OFFICE within \DATA that is intended for data file generated with any of the Microsoft Office programs Word, Excel or PowerPoint. However, I also put Word document files in other directories within \DATA if they relate to particular business activities such as MultiCAD articles, SigBits articles, my wife's work-related documents, etc. Those work category directories may also hold data files from other programs such as Corel Draw and Pagemaker, both of which also have their own "unclassified" directories within \DATA.

Having all user-created data files within the \DATA tree makes it very easy to do backups and to see with Xtree or similar what needs backing up. Any collections of clip art or other graphics that I acquire by scanning or from other people or from bought disks I put in directories called TIF, PCX, WMF, etc, so that they can be easily accessed from any program but all kept together. Since they are not working data files constantly subject to change, I don't put them within the \DATA directory tree but in a separate \LIBRARY tree.

Windows Programs

So, when installing Windows programs and the install program has finished and the program works, there are a couple of things to do. You may want to put the program icons in some other existing Program Manager Group rather than in their own Group as most setup programs do, and you really should set up a working data directory for it.

If the new program is a major thing with several program icons then it might be appropriate to leave it in its own new Group, but often it would be better grouped with other things. That is very easily done by just dragging its icons over to the group window you want them in. If that leaves an empty Group window, just press the DEL key while the title bar of the empty Group window is active to delete the Group.

To set up a working directory, use File Manager to create an appropriate directory to suit your own rationale. Then go to Program Manager, click once on the icon for the new program, and then click on the File menu and Properties. In the Properties dialog box that pops up you will see the program name and its directory in the "Command line" entry box, and probably the same thing in the "Working directory" entry box. Click in the "Working directory" entry box and then on the "Browse" button and pick the desired directory from there. Then click OK, and the program will always start with the working directory as your current place to save or open files.

DOS Programs

In the case of DOS programs the same advice applies, but it is impossible to detail how to set up the access arrangements as it will depend on the particular DOS menu system you use. Basically you will need to have your menu system or batch file change to the desired work directory and then run the program. It may be necessary to have the program's directory listed in the PATH statement, but possibly not. Many modern programs can find all their sub-parts automatically and do not have to be listed on the PATH.

Most installation programs want to add their directory to the PATH for you, and sometimes that is needed, but if you have a lot of programs, the PATH statement can become excessively long.

Taming the PATH

There are several ways to cope with excessively long PATH lists. The first thing is to ensure that the PATH as set up in AUTOEXEC.BAT suits the programs

you use most often, and has the most frequently accessed places listed first.

Your DOS files will most likely have been placed in \DOS, and it is a good idea not to have any files there except those that actually came on the DOS disks. Any extra system utility programs that you acquire such as public domain file managers and an editor and any other general-use programs that are not much more than a single EXE or COM file should be placed in a directory reserved for system utilities. This is most commonly given the name \UTIL.

If you operate from the DOS prompt a lot you will probably accumulate a lot of little batch files. If you operate from a DOS menu system, that system will probably have been installed in its own directory. Depending on the number of batch files and the complexity of your menu system, you may want to have a \BAT directory, or you may prefer to keep them and the menu files in \UTIL, which would reduce the number of entries in the PATH. Quite possibly the menu system may not need to be listed on the PATH.

So if you have the above directories, the basic PATH would be

```
C:\DOS;C:\UTIL;C:\BAT;....
```

If you mainly use Windows, put C:\WINDOWS; as the first entry.

There should not be any need to include the root C:\ in the PATH. The only files there should be AUTOEXEC.BAT and CONFIG.SYS, and possibly some drivers that are loaded by those.

If the PATH gets too long, you may have to use a temporary PATH for some programs. This is easy if you run the program from a batch file or a menu system. If the latter it will probably be easier to use a batch file and give the batch file name as the program name in the menu system. In the batch file, use something like this:

```
@ECHO OFF
SET PTH1=%PATH%
PATH ..... (PATH as required)
CD \DATA\.... (change to work directory)
????? (run program)
C:
CD \BAT (or whatever)
SET PATH=%PTH1% (reset normal PATH)
```

That will save the current path, create a new one and run the program. On exit,

it will change back to your "home" directory and restore the normal PATH.

ADDPATH.BAT

Arrising from that, here is a useful little batch file that allows you to add a directory to the path "on the fly".

```
SET PATH=%PATH%;%1
```

You can't use those commands directly by typing at the DOS prompt, so put them in a batch file called, say, ADDPATH.BAT, then you can type as a DOS command

```
ADDPATH C:\WHATZIT
```

and it will be appended to your present PATH.

Power Japanese

There are now quite a lot of programs for learning foreign languages. Most of them, if not all, run in Windows and make use of graphics to good advantage.

The widely advertised *Power Japanese* program claims to teach reading and writing Japanese as well as conversation. In fact it is a very good conversation tutor, but the writing aspect is limited entirely to the Japanese phonetic syllabaries - Katakana and Hiragana.

Knowing just those is of almost no use at all in reading Japanese! They are only used as an adjunct to the Chinese characters, Kanji, which convey almost all the meaning. You need to know at least 300 Kanji or so, preferably a lot more. A Kanji teaching program would be good, but this is not one. *Power Japanese* is a good teacher of the spoken language, but don't buy it thinking you'll learn to read Japanese.

AutoCAD LT

Autodesk have now released their low cost version of AutoCAD, called *AutoCAD LT for Windows*. It sells for around \$850 and provides quite a lot of the full system's capability. They have also stopped development of *Generic CADD* but it will still be available on DOS and Macintosh. I hope to have a full review of LT for next month.



Software Library News

Brisbug Catalogs

Over the last couple of years it has become evident that members do not always take advantage of upgrading their catalogs on a monthly basis. The average member replaces their catalog disks every six months, some forget to upgrade for 12 months or more.

Each month our catalogs continue to expand with new programs. Up till now we have endeavored to produce a new catalog on a monthly basis, adding new disks and program version changes on a regular basis. Upgrading the catalogs disks every month is becoming a problem, both with time taken and the effort required to produce a new set of disks. It has been decided to change the policy of upgrading every month. Commencing from this month, the catalog disks will only be changed on a bi-monthly basis. New listings will continue to be published in the magazine, but the changes to the contents of the catalogs on disk will only be upgraded every two months.

The charge for upgrading your catalog disks will still remain at \$2.00 per set, \$10.00 for a new set of disks. Catalogs are available on 360K - 5 disks, 720K - 2 disks and 1.4M - 1 disk.

Software Library Assistants

The Software Library and Shop is always on the lookout for new talent at meetings. Helpers to pick out disks for orders - copiers - salespeople to attend to your every want. If you would like to learn about the library and how it operates why not have a talk to Terry Tuttle or Brian Sanborn at the next meeting.

Brian Sanborn has indicated that he would like to have a well earned rest from managing the Software Shop at meetings, but is prepared to train his replacement in the intricacies of the job. The one requirement is that the volunteer is dedicated and is able to collect and return the "goods and chattles" from our store room at Sumner Park each meeting. Responsibilities include attending to members wants, becoming familiar with the registered software and kits handling the 'till' and generally overseeing the operation of the software shop. Any Volunteers?

Library Charges

Copies of disks supplied by the Software Library are as follows:

5.25" Disks - \$4.00 each

3.5" Disks - \$5.50 each

High Density Disks (Special Programs only as advertised) \$8.00 each

Postage -	Up to 8 disks	\$3.00
	Over 8 disks	\$5.00

Catalog Disk Exchange

\$2.00 at meetings or when accompanied with an order for other disks

\$5.00 if ordered separately.

There are 5 - 5.25" disks or 2 - 3.5" disks in our catalogs. *Don't forget to allow for these when calculating postage.*

BLANK DISKS are also available from the library, costs as follows:

5.25"	360K MD2D	\$ 8.00 per box
5.25"	1.2M MD2HD	\$15.00 per box
3.5"	720K MF2DD	\$15.00 per box
3.5"	1.4m MF2HD	\$30.00 per box

Postage - \$5.00

Mail - Telephone Orders

Orders can be sent to:

BRISBUG SOFTWARE LIBRARY
95 Station Road
BOOVAL QLD 4304

or by phone to (07) 281 6503 - 9am to 1pm
2 pm to 4 pm Monday to Friday.

Payment

All orders must be prepaid (sorry, no credit facilities are available) by cheque, postal order or by credit card (BankCard, MasterCard or Visa).

CREDIT CARD MINIMUM - \$25.00

PLEASE ALLOW AT LEAST 10 DAYS FOR
PROCESSING ALL ORDERS.

Registered Software

The Software Library has a substantial range of Registered software available. Some of the games and educational programs are held in stock, others can be obtained as required. A list of available software is obtainable from the Library.

STOP PRESS

Watch for the latest Epic Game XARGON available soon!

Minutes - General Meeting - Sunday 12/12/93

Chris Raisin

1-16 post meridian and where was everyone? Obviously a lot away on holidays and not many at the Christmas meeting of Brisbug PC User Group Inc.

Lloyd Smith opened the General Meeting and welcomed the dwindled crowd (plus a few crickets) to the Christmas Meeting. He started by thanking Rob Neary of Ramware for yet another great presentation of his educational software. (Great Christmas pressies which educate and excite at the same time!)

Lloyd advised that a presentation by Microsoft would be made after the General Meeting, and then it will be "the great Christmas Bash" at the refectory.

A reminder that next month will be the AGM (Sunday 16/1/94) and then all meetings would be on the third Sunday of each month (unless advised otherwise). Obviously some members had not read their magazine from the last two months when everyone was advised that THIS Sunday (12/12/93) would see a meeting on the SECOND Sunday of the month. (The planned AND ADVISED non-posting of the magazine until after this meeting also must have caught a few members napping.

Life membership nomination

Graeme Darroch (Vice-President) came forward with a notice of motion (on behalf of the Management Committee) thusly: "THAT Life Membership be granted to Member #8 (family member Peter and Helen Grimes)". This motion was seconded by Chris Raisin and was tabled for consideration and vote at the Annual General Meeting (as per the Constitution).

Rewards committee

The Rewards Committee then made another presentation, this time to two members (a shout from the magazine editor "stall while I get my camera!"). Lloyd Smith (who was making the presentation) reminded everyone that ANYBODY who works for Brisbug can be nominated by a member to receive an award, but the nomination must be in WRITING and must be either sent to the club's PO Box (985, Toowong) or handed or posted to El Presidente Lloyd (the great). There is a limit of two awards per month

(but some months there may only be one). The Management Committee members are NOT eligible in their roles on the committee (but may be for other duties they perform for the club "above and beyond").

Having filled in sufficient time for the picture hungry press, Graeme had "much honor" in presenting awards of software packages to both Brian Sanbourne and Terry Tuttle. (Those two have been helpers for yonks!)

After the applause died down to a din, Graeme Darroch gave a "Vice-President's Report" - that's new! He advised the Management BBS was now underway and, thanks to the generous people at Maestro, the club has acquired a 14,400 baud modem at a more than agreeable price.

Treasurer's report

Lloyd thanked Graeme who then retired (not literally). The President welcomed "Mr Kunzelmann" (the Treasurer) to the stage. "OOH! They call me MR now!"....said the amazed carrier of the purse strings before he dazzled us all with this month's stats.

Continued over



Les Cathcart's Junior Group was a "full house" for much of the day, with attendance topping 90 kids and "oldies"

November started with	\$14,465
Interest added	\$ 35
Deposits from various	\$11,614
Expenses to various	\$ 8,170
November ended with	\$ 7,945

Bernard Speight had it easy this month! There were to be no SIGS (or classes for that matter) after the Christmas General Meeting. Suffice to say that the Gold Coast SIG will be having their next meeting on 4th February, 1994 at which Graeme Darroch will be talking about BBS's and "how they work".

There was no educational report either, since Rex Ramsey was still at classes with his pupils.

Attack dialling the BBS

Paul Marwick gave a fiery BBS report. He stated firstly that he would be on holidays from 23/12/93 to 2/1/94 (that long!?) If the BBS survives, well and good, but if it crashes during that time...stiff luck, there won't be anyone there to fix it!

More serious matters! Paul advised that he has supplied Austel with details of four separate cases of attack dialling on the BBS. Two of the four were Brisbug Members and the other two were visitors. All four are under investigation and will be prosecuted if Austel can establish a case. Members are reminded it is unlawful to continually dial into a telephone line (WHETHER YOU CONNECT OR NOT!) You must not ring a number any more than three times in any one half-hour period and must have a period of at least one minute between each connection attempt.



How many do we need for a quorum, Mr Secretary?

Magazine report

As the audience started realizing they had better check out their telecommunications software at home, Ron Lewis took to the stage to give a magazine report. Lloyd remarked what an excellent job Ron had done on the December magazine (which was either handed out on the day (today) to members present or will be posted to those who could not attend this meeting). There was much agreement from the appreciative members in the crowd.

Ron reminded everyone that **THERE WILL BE NO MAGAZINE FOR JANUARY.** (Remember that as you read these minutes in the February issue!) The club is still look for authors for articles, especially for the planned "Theme Issues" on "New Members" and "Communications" in the New Year.

The net cost of the bumper December issue should be less than two individual month's magazines if they had been printed and distributed as per normal. The cost of production is roughly \$9,000 and postage for non-collected mags will amount to approx. \$1,500.

Lloyd re-took the reins, again thanking Ron for a job of which he can be proud. The President took the opportunity of giving a Library Report (yes, he is still Chief Librarian!) before he closed the meeting.

Library's Xmas break

The Library will be closed from 4.00 p.m. on 20/12/93 and will re-open about three weeks later. The library will close early today (being Christmas Party time) so get in fast!

That said, on behalf of the Management Committee of Brisbug Lloyd wished all members and visitors a very merry Christmas and a safe and happy New Year.

The meeting closed at 1-39 p.m., and Graeme Darroch introduced Craig Spender, a local representative from Microsoft, to the audience for the afternoon's special presentation.



The Ramware team, Rob, Felicity and Emma worked very hard at our Xmas meeting with presentations to both the Junior Group and Senior Club.

THE THINGS YOU LEARN FROM READING ECHOMAIL

From: "David A. Curry" <davy@ecn.purdue.edu>

WORLD WIDE PRODUCT ANNOUNCEMENT

LAFAYETTE, IN — November 9, 1991 — After nine months of intense development, Curry & Curry are proud to announce the newest model in their product line, the Sean Mason.

FEATURES

The Sean Mason represents the current state of the art, including such advanced features as a neural-network-based central processing unit (CPU), short- and long-term on-line data storage (memory), and a self-learning, self-teaching operating system with automatic heuristic development, error detection, and error correction.

The Sean Mason also comes equipped with a variety of peripherals including two five-digit manipulators which can also function as small arithmetic processing units (APUs); an input port that will accept data in liquid formats (solid formats are under development); two output ports for liquid and solid data formats; one variable-volume, variable-pitch audio output device; two audio input devices with 20-20,000 Hz frequency response; two video input devices which may be used independently or combined for stereo vision tasks; and self-propulsion.

The initial operating system shipped with the Sean Mason is primitive, and will require a good deal of instruction from the end user. Fortunately, most end users find this instruction process very self-rewarding. As the neural network becomes more adept at simple tasks, the operating system rapidly becomes capable of self-modification, resulting in a greatly increased rate of development. During this time, the operating system will devise and conduct numerous experiments, some of which may be hazardous or otherwise undesirable. When the unit enters this mode, the TIMEOUT and SPANK debuggers may prove useful for correcting the problem.

DIAGNOSTICS

CRY, an audible alarm indication, is triggered upon input queue underflow or output queue overflow. As the operating system accumulates more data, it eventually develops automatic input and output queue length regulation. SMILE, a visible alarm indication, is triggered upon underflow or overflow rectification, and also as a general sign of the unit's proper functioning. BURP, another audible alarm, indicates successful processing of available input.

OPERATIONAL NOTES

When the video input peripherals are covered, this indicates that the unit is in its idle loop, used for automatic

recharging. Initial recharging periods are short and irregular, but gradually they become regular, lasting for approximately 8 of every 24 hours. Termination of recharging mode may raise the CRY alarm condition.

After initial unpacking, the unit will require input every two to three hours. After input processing has been completed, one or both output devices may be activated. Presence of output may be signalled by the CRY alarm condition.

CAUTION

The appearance of the unit, which reflects the current state of the art in exterior packaging, may cause irrational behaviour in adults. This behaviour is typified by "oohs", "aahs", and incomprehensible utterances commonly referred to as "baby talk".

SPECIFICATIONS

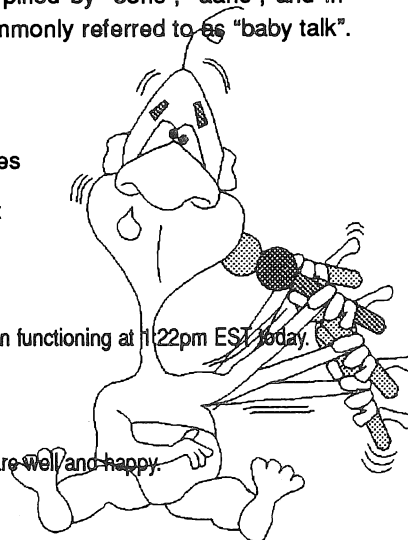
Length:	19.5 inches
Weight:	8 lbs 1 oz

AVAILABILITY

The prototype Sean Mason unit began functioning at 11:22pm EST today.

STATUS

The production staff, although tired, are well and happy.



This prompted the following response

UPDATE — Sean Mason Prototype

Mason to be Self-Replicating!

Designers of the Sean Mason Prototype are enthusiastic about the prospects of this state-of-the-art device to be capable of self-replication in the foreseeable future.

Researchers and Technicians working on the Mason hardware design have tapped into a hitherto unused aspect of one of the primary output devices, and hope to be able to use it as

Continued on page 49

VOLUNTEER REWARDS SCHEME BY-LAWS

Your committee has established a scheme to reward members giving outstanding service to Brisbug. The Rules for this scheme are detailed below

Definitions:

In these By-Laws the following definitions (unless inconsistent with the text) shall apply:

- (a) The word "Brisbug" shall mean Brisbug PC User Group Inc.;
- (b) The word "President" shall mean the President of Brisbug;
- (c) The word "Rewards" shall mean Volunteer Rewards;
- (d) The words "Management Committee" shall mean the Management Committee of Brisbug for the time being;
- (e) The word "member" shall mean a financial member of Brisbug;
- (f) Words implying the masculine gender only shall also infer the feminine gender and vice-versa;
- (g) The word "nominee" shall mean any financial member of Brisbug, recommended or nominated for a Reward under these rules;
- (h) The word "nominator" shall mean any financial member of Brisbug.

Objects:

The purpose of the Rewards Scheme shall be to acknowledge the efforts and work of members of Brisbug who have given of their own time and endeavours for the benefit of Brisbug and its members without receiving any financial remuneration.

Rewards:

1. The Rewards shall comprise commercial software or any other item as shall be acquired by Brisbug and assigned by the President for the purpose of a reward.

Eligibility:

2. All financial members of Brisbug shall be eligible for nomination for consideration of a reward by any other member of Brisbug, subject to the following conditions:

- (a) No member of the Brisbug Management

Committee shall be eligible for a reward for his normal duties as required as a member of the said Management Committee.

(b) A member of Brisbug approved for a Reward for a particular reason, shall not be eligible for a reward for the same or a similar reason for a period of 12 months from the date of the presentation of the Reward.

Method of Nomination:

3. All nominations for rewards:

(a). Must be in writing and must state the name of the nominee, a brief outline of the reasons why such a reward should be considered and signed by the nominator and the nominator must supply his Membership number.

(b). Must be supplied to the President or his appointed nominee either in person or sent to his residential address or placed in the Suggestion Box at the monthly meeting.

Establishment of Rewards Committee:

4. The President shall cause to be established a Rewards Committee comprising at least 3 other members for the purpose of evaluating and determining each and every nomination.

Duties of Rewards Committee:

5. The duties of the Rewards Committee are:

(a) At least once in every calendar month, the President shall supply to the Chairman of the Rewards Committee, all or any nominations so received during the preceding month.

(b) The Rewards Committee shall determine each and every nomination on its individual merits and shall report their recommendations to the President before the next Management Committee meeting,

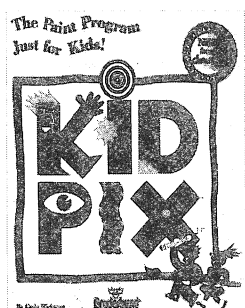
(c) If a nomination is received for any member of the Rewards Committee, he shall refrain from voting on his recommendation, and shall not attempt to influence the other members of the Rewards Committee in any way.

Continued on page 66

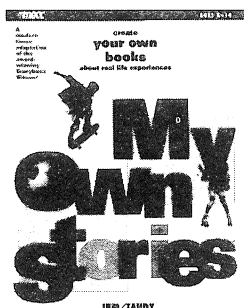
News Flash

Looking for great educational software?
Then look no further.

BRISBUG has the following quality titles for you!
To order contact Lloyd on the meeting days, or see the shop or for
orders - post to BRISBUG



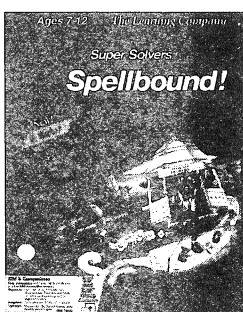
KIDPIX is the ultimate graphics or drawing package for your children. it has magic erasers, music and sound as well as a great range of tools and effects. Requires a mouse and EGA or VGA monitor. Normal RRP \$89.95 BRISBUG Members \$ 85.00



MY OWN STORIES is an excellent program for children interested in writing their own stories and printing them out. The program comes with an easy to use menu system and stunning graphics as well as a range of styles of printing for incorporation into the stories. Children can enlarge and reduce the graphics, change their colour, flip them horizontally, and add sound effects (sound card required) and then print the story in living colour to one of the many colour printers available in the printer setup menu. Black and white is good too! RRP \$79.95 BRISBUG \$75.00

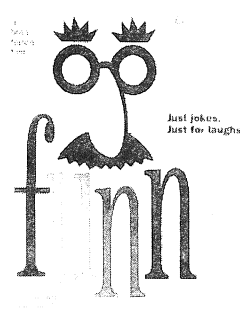
SPELLBOUND! is a the Super Solver series from has a number of games to spelling skills. With a sound say a word from its lists! as well as use the many which highly entertaining game with

RRP \$79.95

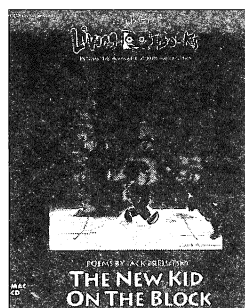


wonderful continuation of the Learning Company and enhance and develop card, the computer will even Parents can create word lists are provided. This is a real educational value.

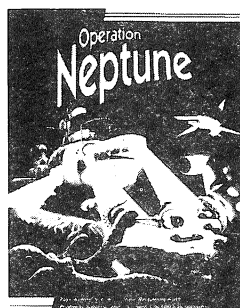
BRISBUG \$75.00



FUNNY is THE CD-ROM! this is just a bit of fun and has a huge number of jokes told by some of the world's best tellers about every conceivable (Ooops!) subject possible. You will split your sides laughing and it's great value at RRP \$79.95 but even better at \$75.00 for BRISBUG

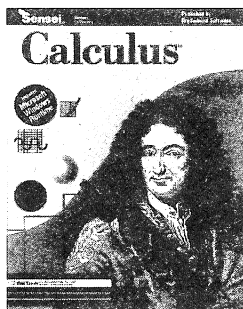


NEW KID ON THE BLOCK is another of those wonderful Living Book series CD-ROMs from Broderbund. This CD-ROM contains a collection of poems suitable for 5 to 15 year olds - and even you will get a laugh and enjoy them! Following in the same tradition as Grandma & Me, New Kid on the Block has two languages - English and Spanish - and you can have the poems in either the READ TO ME or LET ME PLAY mode. Young child will adore the Forty Dancing Banans while older children will love the poem about My Baby Brother. Wonderful value at RRP \$89.95 BRISBUG Value at \$85.00



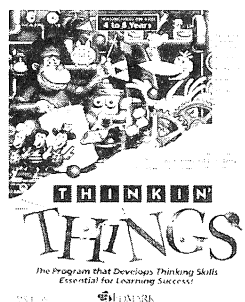
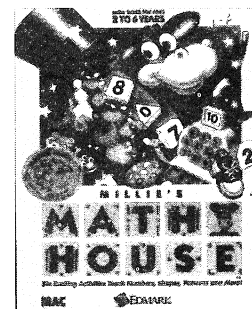
OPERATION NEPTUNE is THE Maths program for Year 5 to 7. It is an exciting sub hunt for pieces of a downed saterllite with math as the means to solve the puzzles for pieces. EGA or VGA, sound card is really a must for the fabulous sound effects. RRP \$79.95 BRISBUG \$75.00

CALCULS is as its name suggests - a course in Calculus. It comes with a runtime version of Windows 2.0! but can be run under Windows 3.x. An excellent product for Year 11 & 12 math students or those wanting to refresh their knowledge. RRP \$149.95 BRISBUG \$135.00



MILLIE'S MATH HOUSE is an absolute joy of a program for the pre-school group and early Year 1s. The program looks at size distinction, patterns, counting, adding and has a parents section to help you maximise the programs benefits with your young children. Children can be set tasks by the computer to test their understanding. You'll need a sound card to get the most from the product as well as a mouse - and you really need VGA

RRP \$89.95 BRISBUG Value at \$84.00



"THINKING THINGS is THE BEST PRODUCT for the early childhood market". That's how Rob Neary of RAMWARE described it and once you've seen it you'll agree. Real thinking challenges for the young user. You'll HAVE TO HAVE A SOUND CARD! because the program uses extensive speech, music and sound clues as part of the challenges and approach to problem solving. VGA is essential too and you need a 386SX or better to run.

RRP \$108.95 BRISBUG Value at just \$89!



MAPS'N'FACTS is the latest version of that old favourite PC Globe. The maps have been enhanced and are now excellent as well as the usual array of comparative geographic data. RRP now only \$69.95. BRISBUG Members only \$65.00!!

New Library Listings

BBUG 3101 WORD SEARCH PUZZLE MAKER

*CLASSIFICATION * Games * Floppy/Hard Disk * Printer*

WORD SEARCH PUZZLE MAKER (WSPM) generates word search puzzles and prints them on your printer. In fact, WSPM can make at least 24 different variations of the popular word search puzzle.

WSPM comes with an editor so you can shape and customize your puzzles. It can also save puzzles in ASCII files so that you can import the puzzles you create into text editors and word processors. This means that you can work puzzles into newsletters and do many other exciting things with them.

The program comes with full documentation that lets you see how to use WSPM to its fullest potential.

BBUG 3102 BDEXX Version 2.0

*CLASSIFICATION * Utilities * Hard Disk*

BDEXX is a hypertext system and search engine. BDEXX has many attractive features:

- Allows up to 65535 files or 65535 screens of text in a single library.

- Hypertext links to other screens, graphics, sound files, and executable programs.

- Uses direct screen writes (for maximum speed) or ANSI control sequences (for maximum compatibility or remote access.)

- Supports skipping forward and backward any number of pages (true random access to any page.)

- Will write pages of text or entire documents to an external file, which can then be imported into another document.

- Has a powerful Boolean search language with wildcarding.

- Will work in either local mode or remote mode. BDEXX uses the normal popup menu interface for ANSI users, and also provides an alternate user interface for remote use by standard ASCII terminals. BDEXX works very well as a "door" program for bulletin board systems.

- Has a "bookmark" feature. When you exit a BDEXX library, your current page number is saved. You'll be returned to the same screen the next time you access that library. In addition, if you've used the search command, your search set will also be saved.

- You can continue examining your search results the next time you use the library.

BBUG 3103 WIN Rx

*CLASSIFICATION * Virus * Windows * Hard Disk*

WIN Rx is a new generation scanning software program. It utilizes "DeepScan" to find all known viruses, including stealth viruses and viruses that modify themselves. Since WIN Rx does much more than simply compare files with known viruses, it offers the best scanning protection available today.

Features and Benefits:

- A True Windows Utility.** This means that you can use other applications while WIN Rx is scanning.

- Combats Known viruses.** WIN Rx can find over 1000 known viruses and strains.

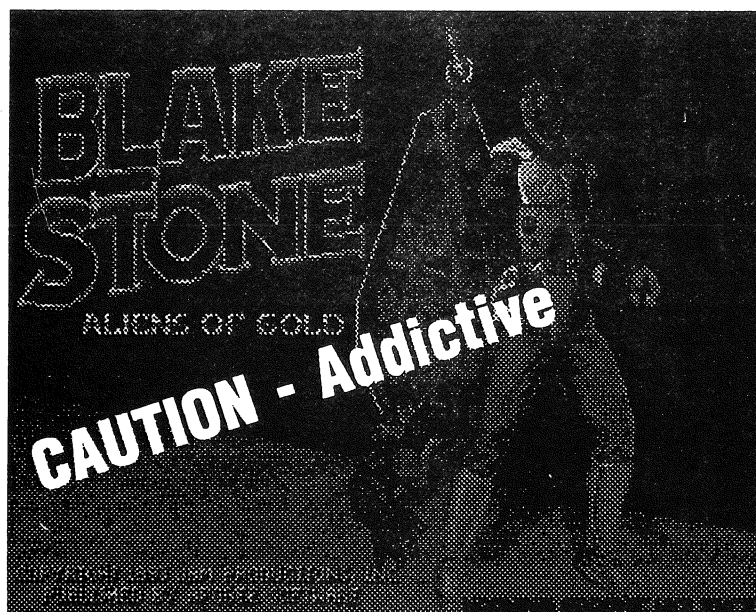
- Combats Stealth Viruses.** WIN Rx's "DeepScan" capability performs a low-level search for malicious instructions that are typical of destructive viruses. Thus, even when a virus modifies itself, WIN Rx can often find it.

- Custom Scanning.** Flexible scanning options allow you to scan a file, directory, disk or all volumes.

- Stop Scan.** Gives you flexibility in scanning.

- Report Application Launch.** If a virus is found, WIN Rx will launch your favourite word processor with the virus report.

- Help Function.** A fully-integrated help utility makes WIN Rx easy to use, even if you are not a computer expert.



Blake Stone is HERE !!!

✓ 2 HUGE NEW Games

✓ Windows-based Anti-Virus

✓ Lots of Business aids

Cleaning Function. A "clean" function removes virus codes from infected files without harming the files.

Convenient Options. Through the Options menu, you can control scanning functions for sub-directories, the boot sector and partition area, and memory.

BBUG 3104 NOVA STRIKE Version 2.0

*CLASSIFICATION * Games * Hard/Floppy Disk * 286/386/486 * Mouse*

NOVA STRIKE is a flight simulation combat game which takes place in space. The object of the game is to develop the strategies and tactics necessary to destroy all the enemy ships. You are given only one ship which has superior performance and weapons to accomplish this.

There are 3 difficulty levels. The levels correspond to the number of enemy ships per base when the game begins. The levels become geometrically harder to win at.

The object of the game is to destroy all the enemy ships. When either your ship or all enemy ships are destroyed the game will end, unless there are missiles in flight. If so, the game will continue only until they detonate. If your ship was destroyed during this time, your keyboard and mouse will be frozen. The game can end in a win, lose or draw.

BBUG 3105 ABOVE AND BEYOND Ver 2.1

*CLASSIFICATION * Business Organiser/Planner * Windows * Hard Disk*

ABOVE and BEYOND is a powerful system for planning, managing and tracking one's active business and personal life. All types of recurring activities need to be entered just once. You can print schedules to take your plans wherever you go. ABOVE and BEYOND also includes a pop-up calculator, alarms, task and event timers, week and month at a glance, contact database, and much more.

With ABOVE and BEYOND, you can plan time for everything you want to do!

ABOVE and BEYOND is also ideal for workgroups. Where workstations are connected via a LAN, managers can balance the work-load of staff members, assign new items, prioritise work, as well as check task completion status without interrupting on-going work.

ABOVE and BEYOND automates the process of arranging meetings for group members, posting meeting notices to all attendee's schedules. Secretaries can post phone messages for calls to be returned and monitor multiple schedules to know who is where when.

ABOVE and BEYOND streamlines work-flow and productivity soars!

BBUG 3106 AQUARIUM Version 1.046

*CLASSIFICATION * Screen Saver * Hard Disk * EGA/ VGA * Mouse (optional)*

AQUARIUM turns your monitor into a eye-catching fish tank. Aquariums are a proven method of relaxing. This realistic aquarium lets you control the number and type of fish, display floating messages in the background, make the fish change direction, and more. Includes both a display and screen save mode of operation.

Also included is a TSR version of AQUARIUM.

BBUG 3107 DESKTOP HELPER

*CLASSIFICATION * Desktop Utilities * Windows * Hard Disk*

DESKTOP HELPER is a Windows Desktop utility that provides capabilities missing from Microsoft's Program Manager while also providing the more important capabilities of the Task Manager.

Features include:

Convenient pop-up menu at the click of a button. Pop-up menu available from any window. Configurable launch list of frequently executed programs. Switch to or terminate a task, even if the task is not currently visible. Display free system resources. Able to exit Windows without being queried about saving Desktop changes. Pop-up file selector browser to choose a file to run. Small memory usage.

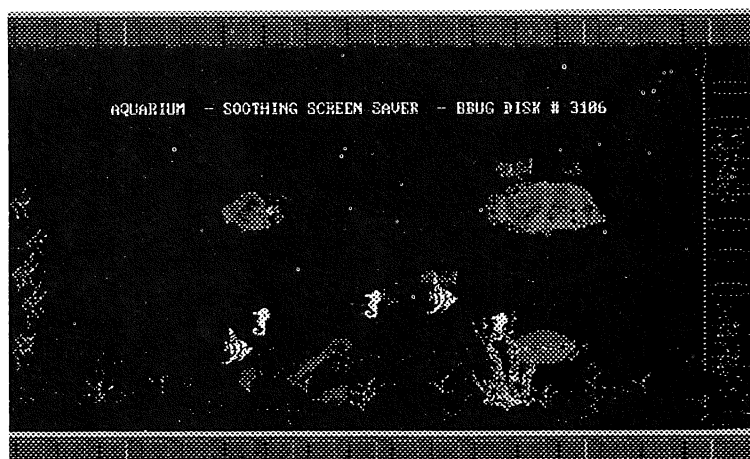
BBUG 3108 TYPING TECHNIQUE

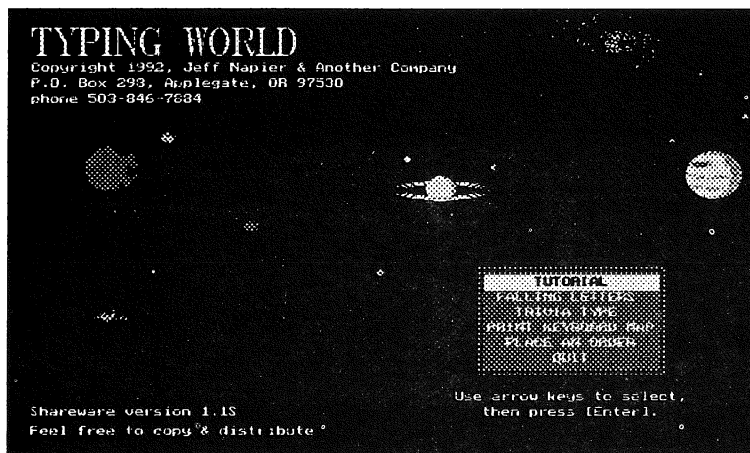
*CLASSIFICATION * Tutor * Floppy Disk * Colour Monitor*

By learning and practicing the standard techniques developed for typing, you'll be able to type faster and more accurately.

TYPING TUTOR will show you which fingers to use for

**BBUG 3106
Aquarium**





BBUG 3108 Typing World

which keys by a simple colour coding method. If you stick to this pattern, you will learn it and always know instantly where every key is and which finger you use to press it. You'll catch on with just a little bit of practice.

BBUG 3109 DATASHOOTER Version 1.00 (Disk 1 of 2, also 3110)

CLASSIFICATION * Utilities * Hard Disk * Mouse

DATASHOOTER is a memory resident utility you can use to automate data entry in any application which runs under MSDOS.

While the DATASHOOTER is working, you can use the mouse or the cursor keys to "point" to a data item. DATASHOOTER will then "shoot" selected fields from the selected item into your DOS application.

For example, you may need to send a letter to one of your sales representatives. You could search through a file or binder for the address and then type it into the letter and the envelope. With DATASHOOTER, you simply hit the "hot key", select the salesperson with your mouse, and "click". DATASHOOTER will type the person's name and address for you -with no typing errors!

You can use DATASHOOTER with ANY of your DOS based programs that run in character mode (accounting packages, wordprocessors, spreadsheets, database programs, etc.). This version is NOT compatible with the WINDOWS graphics based operating system but does work quite well with DESQview windowing system.

BBUG 3110 DATASHOOTER Version 1.00 (Disk 2 of 2, also 3109)

BBUG 3111 OMNIDAY Version 2.27

CLASSIFICATION * Diary * Hard Disk * Printer

OMNIDAY is a computer diary program with many features and toggles. It has over 10000 encryption options for a diary, and can handle up to 10 users at once and even includes a full featured text editor. OMNIDAY works with all major TSR spell-checkers and Thesaurus. All world date formats are handled.

Other program features include: * Optional encryption of data * PassCode entry to protect privacy * Automatic entry of text date line * Modifiable PassCodes & encryption options * Dynamic data file (only as large as entries) * Entries can be from 1 to 5000 lines * The ability to change history (Alter, Entry) * Word Wrap & Scroll toggle on/off * Common word processor commands used * On line Help

OMNIDAY is
a computer
diary
program
with over
10000
encryption
options

available * Reminisce feature allows you to 'thumb' through entries * Data files automatically install * Prints out entire opus or selected dates * Much more!

BBUG 3112 MINDCUBE GAME Version 1.0

CLASSIFICATION * Games * Floppy Disk * EGA/VGA

The MINDCUBE GAME is a Maze Block Game. The object of the game is to complete all 7 screen levels before you lose your 3 men.

Each level consists of a maze of blocks. Within each level there are 10 special green (\$) blocks, which you must pick up (all 10) before you can go on to the next stage. Your man is used to push the other blocks around so that you can reach the 10 special blocks. You must avoid the spy cameras and time limits and delay traps etc... they make it pretty hard to reach the highest level!

BBUG 3113 GOLDHUNT Version 1.0

CLASSIFICATION * Games * Floppy Disk * EGA/VGA

GOLDHUNT is an adventure game. The object of the game is to reach all 10 levels of the adventure. Your man in Blue, is trying to pick up all the Green Gold Pots on each level. There are 12 pots per screen. Once these 12 pots are taken, a special door will appear. Reach that door and you will move onto the next level.

Of course there are things which are trying to prevent you from reaching your destination. You must complete all 10 floors to finish the game. This is rarely done... however, you will soon develop strategies which will help you acquire more points and further levels.

BBUG 3114 MARBLE MAN GAME Ver 1.0

CLASSIFICATION * Games * Floppy Disk * EGA/VGA

MARBLE MAN GAME is very simple. There are two players. You are the Blue man and the computer plays the Red man. At the start of each game, there will be Red balls placed on the grid at the top and an equal number of Blue balls matching this pattern on the bottom.

The objective is for the players to push their balls to the other side of the grid. The blue player tries to push his balls up, and off the top, while the red player pushes his balls down to the bottom. Each ball contains the a value corresponding to its position on the grid.

BBUG 3115 TRIBOLO Version 1.0

CLASSIFICATION * Games * Floppy Disk * EGA/VGA * Mouse

TRIBOLO also know as Three Way OTHELLO is a strategy grid game. The object is to have the majority of your color squares on the board at the end of the game.

In the game of Othello, you play against a single opponent and all your strategies are straight forward. However, in TRIBOLO, not only is the game board always different, but you now have two opponents! This makes all the old othello strategies useless, you'll discover why as you begin to play.

There are three colors; you are Blue and the computer plays your two opponents, Red and Green.

A move consists of outflanking your opponents squares by putting it so that your color is on either side; or diagonally, of your opponents squares (Red or Green). You must be able to flip over one of the opponents to your color, or the move is not valid. The computer checks all valid moves.

BBUG 3116 BOLO BALL Version 1.0

*CLASSIFICATION * Games * Floppy Disk * EGA/VGA*

The objective of BOLO BALL is quite simple. You try to push your 29 balls down a maze so that they reach the bottom row. The farther down you can get them, the higher the score. You can play against the computer or against a friend.

BBUG 3117 LAVA CAP Version 1.0

*CLASSIFICATION * Games * Floppy Disk * EGA/VGA * Mouse*

The objective of LAVA CAP is to create a series of sequential paths to contain the lava flowing out of the erupting volcano. The longer the lava can flow freely without reaching a dead end, the higher the score.

BBUG 3118 OIL CAP Version 5.0

*CLASSIFICATION * Games * Floppy Disk * EGA/VGA * Mouse*

The game OIL CAP pits you against the clock as you try to create links which will allow the oil to flow freely, once it starts to begin oozing from the rocks.

At the start of each level, there is be a starting square from which the oil will begin to flow once the clock timer gets to 0:00. At the bottom of the screen you will see four blocks of links. The object of the game is to place these links in the correct position so that the flow of oil will be directed to the drums.

You can still place links on the game board even while the oil is flowing. Don't let the oil run out of links or that level will end and the score will be totaled.

BBUG 3119 BATTLE FOR ATLANTIS V 2.0

*CLASSIFICATION * Games * Floppy Disk * EGA/VGA*

The object of the BATTLE FOR ATLANTIS is to conquer all eight islands which make up the atoll called 'Atlantis'. You play the army called the Olympians. The computer will play the other three adversaries, the Calydonians, Argonauts, and then Titans.

The game is quite simple to learn and offers different levels of play. The game rules are very similar to the classic game of Risk, however, there are many other elements which you will have to contend with, in order to conquer all 8 islands.

BBUG 3120 TANGLE

*CLASSIFICATION * Games * Floppy Disk * EGA/VGA*

TANGLE is simple to play. Simply Guide your playing line around a maze of your choice, and try to avoid all obstacles. Lay traps for your opponents by entangling them in your line, but don't be too eager, or you'll end up stuck in your own trap.

BBUG 3121 BOOKBANK Version 1.1

*CLASSIFICATION * Database * General * Hard/Floppy Disk*

BOOKBANK is the program to help you manage your book collection. Not a program, THE program... This evaluation version of the program is not limited in any way. It is fully functional and extremely powerful.

Knowing what you have, who you have loaned books to, and what you need will enable you to get the most out of your collection, whether that collection is for enjoyment or investment. You will be amazed at how quick and easy it all is!

BOOKBANK will enable you to spend less time with all the record keeping of book collecting. This will enable you spend more time doing what you really enjoy — collecting books!

BBUG 3122 AUTOMAN

*CLASSIFICATION * Utilities * Hard Disk*

AUTOMAN - Automatic Network Management - software for IBM compatible PC's and the DOS operating environment has the following features :

Automatic file processing: AUTOMAN will automatically process any batch, executable or command file, at any time, on any day or days throughout the year.

Disk space monitoring: AUTOMAN will monitor space on all drives and warn if any disk is filling.

Monitoring of critical data recording activity: AUTOMAN can warn if a critical data recording PC on the network has failed. Applications may be for example, to monitor a Shopfloor data collection or Telephone logging PC.

Integral Batch file editor/De-bugger: The AUTOMAN editor is designed for editing batch files. Standard pull down menu options make use of the editor straight forward.

Context sensitive & DOS help: On-line, Context sensitive help is available on F1 for every DOS command, together with comprehensive help on all aspects of AUTOMAN.

Other features: A customised menu of programs can be created allowing easy access to programs which may relate to AUTOMAN, or to a preferred editor.

**BBUG 3123 ARCHITECT'S HELPER Ver 4.0
(Disk 1 of 2, also 3124)**

*CLASSIFICATION * Business * Hard Disk * Printer * Modem*

ARCHITECT'S HELPER is the program with everything online! A complete manual with 230 pages of documentation, 60 context-sensitive on line Help screens, Fast Search Capability, Rolodex features, Appointment Schedules and Graphics, "Layer-in" ability: 99,999,999 layers of data. And to top it all - all Reports fit into a Standard

BOOKBANK
is the
program to
help you
manage
your book
collection.

**BBUG
3120
Tangle**



IN CONTACT! is a full featured Contact Manager for Windows

Briefcase!

Be in control of your Clients: store up to one BILLION names, phone numbers, or appointments

This program includes: Appointments, Commitments, Callbacks, Statements Revenues/Expenses, Collections, Graphics, Free-form data search, Rolodex [TM] features, Labels management, and Reports!

The labels management menu provides 13 options for you, will recognize 10 different size labels, handles U.S., Canadian, Australian, and British labels.

With a built in intelligent Telephone/Speakerphone Dialing System, that dials all of your phone calls for you and tells you if they are local, local toll, long distance, long distance toll, or international and can output up to 20 follow on codes after dialing long distance. Stores and dials up to one BILLION phone numbers for you.

ARCHITECT'S HELPER contains a built-in proposal and invoice generator, and can time and cost your activities as well as automatically create summary or detail statements to reflect amount owed for activities or consultations.

This program standardizes your contact with clients and converts forgotten verbal commitments into a focused, daily appointments and callback list that nets you extra business!

Retrieve activities by word or phrase, and has built in word processor for every record in the Rolodex [TM] file.

Outputs to dBASE III and to Merge feature in Wordstar, Word, or WordPerfect.

BBUG 3124 ARCHITECT'S HELPER Version 4.0
(Disk 2 of 2, also 3123)

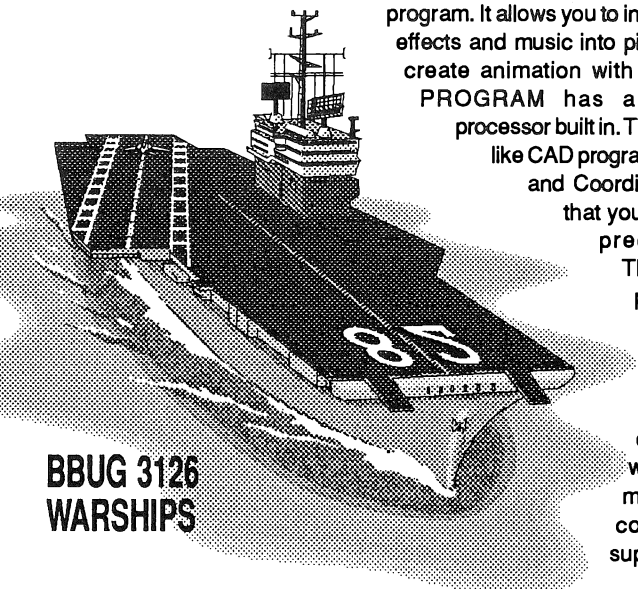
BBUG 3125 ANOTHER PROGRAM Ver 2.0

CLASSIFICATION * Multi-Media * Hard Disk * CGA/EGA/VGA

ANOTHER PROGRAM is a Multimedia Creation Program for anyone who has something to say. Use it to make illustrated catalogs, teaching tutorials and training materials, electronic books, multimedia presentations, retail or shareware products. For teachers, artists and authors, it's powers are obvious. For everyone, you'll find it is easy to create disks that get your ideas to the public.

ANOTHER PROGRAM is simply a drawing program that does a whole lot more than any other drawing program. It allows you to incorporate sound effects and music into pictures. You can create animation with it. ANOTHER PROGRAM has a simple word processor built in. There are features like CAD programs, such as Grid and Coordinate Display so that you can make very precise pictures.

These multimedia pictures can be drawn in Hercules, CGA, EGA or VGA graphics, depending on which video modes your computer can support.



**BBUG 3126
WARSHIPS**

ANOTHER PROGRAM comes with two run-time display engines allowing you to chain your pictures together for sophisticated presentations.

BBUG 3126 WARSHIPS Version 2.1

CLASSIFICATION * Games * Floppy Disk * EGA/VGA * Mouse

WARSHIPS is a computerized version of the "Classic" Battleship game. One player competes with the computer in a race to see which fleet of ships is sunk first.

The player and the PC opponent each have a fleet of five different ships. The object is simply to locate and sink the opponent's fleet while you are still afloat.

BBUG 3127 IN CONTACT! Version 1.0 (Disk 1 of 2, also 3128)

CLASSIFICATION * Business * Windows * Hard Disk

IN CONTACT! is a full featured Contact Manager for Windows. Packed with features for the professional: Work/Home, 6 phone numbers, notes (up to 64k/contact), custom category/status, 8 user-defined "flag" fields, last call/call back & more. Link files from other applications to any contact. Customize the display to suit your needs. Convenient entry: auto-capitalize by word or sentence, calendar browser for date entry, mouse control bar with fast record scroll, great keyboard interface for keyboard users.

IN CONTACT! is extendable: launch most any application from the menu with "smart" calling to allow tight integration. Auto-dial, call tracking, contact selection, form letters, labels, reports and full DDE support round out the features of this aggressive application.

BBUG 3128 IN CONTACT! Ver 1.0 (Disk 2 of 2, also 3127)

BBUG 3129 CALLIOPE MUSIC VISION Version 1.6

CLASSIFICATION * Music * Hard/L/Floppy Disk * CGA/EGA/VGA * Sound Blaster

CALLIOPE MUSIC VISION (CMV) is designed for use with a Sound Blaster sound board. It will play single track Midi compatible music files.

The main features are:

Play up to 1000 songs, start to finish. Play a single song from the command line. Play any number of songs continuously. Execute single or double replays instantly, or delayed. Save your session to a disk file. View the music names in the Queue. Play a "saved" session. Screen Saver option

Included with CALLIOPE is a program ROL2MIDI which allows you to easily convert a .ROL file into a Midi compatible .MDI file.

CALLIOPE IS NOT CRIPPLED IN ANY WAY. NOTE: No "drivers" are required to run CMV.

BBUG 3130 AEROCHART Version 1.00

CLASSIFICATION * Health * Floppy/Hard Disk * EGA/VGA

AEROCHART helps formulate a set of easy to reach exercise goals and attain them. The program graphs and reviews track your daily and monthly progress, and

calculates aerobic points and calories expended from 48 different exercises.

AEROCHART accommodates large families, health organizations, fitness centers, and corporate wellness programs. It insures privacy for personal charts. Incorporates your personal strategies and techniques. And that's just a few of the many features!

BBUG 3131 ME & MY METABOLISM V 1.00

*CLASSIFICATION * Health * Floppy/Hard Disk*

The hot new diet that worked for your neighbor may not even come close to addressing the issues that drive your weight up or down. Because body shape is an individual matter influenced by the interplay of genetics, culture, and personal behavior, notions and feelings, ME & MY METABOLISM focuses on the individual person. There is no generic fat that melts and stays away because you eat fewer calories.

ME & MY METABOLISM examines basal metabolic rate, assesses total energy expenditure and evaluates eating style. Find your answers to questions like ... Why do I eat the way I do? How much effort significantly raises my activity level? Do I need to do something to balance calories eaten with calories burned?

All this and more.

BBUG 3132 MULTILABEL Version 2.5

*CLASSIFICATION * Printing/Labels * Windows * Hard Disk * Laser Printer*

Need a lot of labels? MULTILABEL's your program. Using MULTILABEL with Windows you can create professional-looking labels in just a few minutes. It's far easier to create and print your labels in MULTILABEL than by following the traditional path of using a word processor or desktop publishing program to do the job. Supplies are no problem, since MULTILABEL uses standard Avery Laser Labels...all of them!

Using MULTILABEL, you have complete control over the entire design process. Since you see your label on the screen, as it will appear when printed, you can make as many changes as you like, as often as you like.

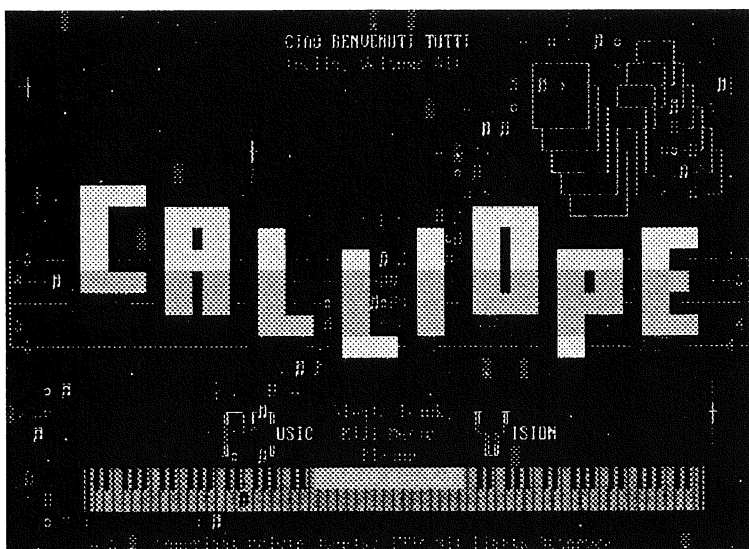
If you're a graphic design professional, or the owner of a small print shop, MULTILABEL's your answer too. Instead of your customers trying to figure out what they want their labels to look like, they can see the design on paper—before you send it to the printer. The result is far fewer costly returns. You have a happy customer and cash in your pocket.

There's even more. Using MULTILABEL's multiple copy printing option, you can print as many sheets of your customer's designs as you need. Being able to offer your clients a quick batch of labels while they wait can mean the difference between a sale and a walk-out.

BBUG 3133 RECAP Version 2.4

*CLASSIFICATION * Database Utilities * dBase III * Floppy/Hard Disk*

RECAP corrects capitalization in data files. It can be very frustrating to find that some of your database records have been entered in all caps when you didn't want them that way, or that some have not been entered in all caps when you did want them that way!



RECAP will go through any dBase III-compatible database file and make the desired adjustment.

BBUG 3134 CAD VANTAGE Version 1.00

*CLASSIFICATION * CAD * Windows * Hard Disk * Printer*

CAD VANTAGE is the first affordable CAD (Computer Aided Design) program for Windows. It provides a wide range of functionality in an easy to use package.

CAD VANTAGE allows you to create drawings of real world objects in two dimensions using their actual measurements. They can then be plotted at any scale you choose on any of the vast number of printers and plotters supported by Windows. The biggest advantage of using a computer to create these drawings over conventional hand methods is the ease with which a computer based drawing can be edited and then replotted at different scales.

CAD is used in many fields including: architecture, cartography, electronics and engineering. It can be used to create house plans, maps of all kinds, printed circuit diagrams, and any kind of graph, chart, diagram or illustration.

This program allows you to create drawings using 5 basic drawing elements. These elements are: lines, arcs, circles, points and text.

Edit options include: select, cut, copy, paste, rotate, scale and undo. Drawing elements include: lines, arcs, circles, points and text. Line properties include: type, width and color. Full text font support. Scaled plots, on-line help, element snaps, zoom, pan and much more.

BBUG 3135 DISK SPOOL II Version 4.05 (Disk 1 of 2, also 3136)

*CLASSIFICATION * Printing Utilities * Hard Disk * Printer*

DISK SPOOL II sets up a print spooling environment where printed output is spooled to disk, rather than to memory.

This version has support for Networks, Expanded (EMS) and Extended (HMA) memory, device driver model, full Windows 3.x, AutoCad. A popup menu supports VGA graphics applications, and it comes with a sophisticated installation program.

Features include: Saving time by printing in the background. Working with virtually all applications; no modifications necessary. A pop-up menu obtainable from within almost any application controls starting and stopping spooling,

**BBUG 3129
CALLIOPE**

**CAD
VANTAGE is
the first
affordable
CAD
(Computer
Aided
Design)
program for
Windows**

**DISK
SPOOL II
printed
output is
spooled to
disk**

starting and stopping printing, displaying the contents of the spool file or files, changing printing ports, and much more. It can be set up to spool data being sent to COM1, COM2, LPT1, or LPT2, and can print the contents of the spool file to COM1, COM2, LPT1, or LPT2 and a great deal more.

BBUG 3136 DISK SPOOL II Ver 4.05 (Disk 2 of 2, also 3135)

BBUG 3137 WINDOWS ARCADE GAMES II

*CLASSIFICATION * Games * Windows * Hard Disk*

This collection of arcade games for Windows includes:

ALIEN FORCE a simple "blast everything that moves" game. **BANGBANG** a game of skill to set up the trajectory of a cannon shell to hit your opponent. **BITMAP** is a Tetris like game. **DALEKS** is a game for Dr. Who fans to destroy the Daleks. In **MISSILE**, you must use your skill to protect the cities in your care. **STARBASE** is a simple game for younger children to destroy oncoming missiles and protect the base.

Requires VBRUN100.DLL.

BUSINESS CARD

DESKTOP PUBLISHING

BBUG 3138 ROCKFORD! Version 2.5

*CLASSIFICATION * Desktop Publishing * Windows * Hard Disk * Laser Printer*

Need a business card? **ROCKFORD!**'s your program. Using **ROCKFORD!** with Windows, you can design professional-looking business cards in just a few minutes. It's far easier to design your cards in **ROCKFORD!** than by following the traditional path of going to your printer and trying to pick out a business card design from a book.

If you hired a graphic designer to create a business card, you'd spend much more than you did for this program, and the results might not be as good. Using **ROCKFORD!**, you have complete control over the entire design process. Since you see your card on the screen, as it will appear when printed, you can make as many changes as you like, as often as you like.

If you're a graphic design professional, or the owner of a small print shop, **ROCKFORD!**'s your answer too. Instead of your customers trying to figure out what they want their cards to look like by looking in your book, they can see the design on paper—before you send it to the printer. The result is far fewer costly returns. You have a happy customer and cash in your pocket.

There's even more. Using **ROCKFORD!**, you can print sheets of your customer's designs, then copy them onto card stock. Just cut the cards and you can offer 1-hour business card service. **ROCKFORD!** doesn't take the place of a true print shop, but being able to offer your clients a quick set of 100 cards while they wait can mean the difference between a sale and a walk-out.

ROCKFORD! isn't limited just to business cards. Clubs can use **ROCKFORD!** to produce membership cards. Used with readily-available pin-back card holders, **ROCKFORD!** can produce ID cards. Many users also use **ROCKFORD!** to create humorous or gag cards. Use your imagination.

BBUG 3139 FONTER AND WINCLIP

*CLASSIFICATION * Utilities * Windows * Hard Disk * Mouse*

Windows lets you use fonts quickly and easily, both on the screen and in your printed documents. Using Windows 3.1's TrueType fonts, or fonts automatically scaled by programs like Adobe Type Manger, Bitstream FaceLift, and others, you can have access to thousands of typefaces, all of which will work in any Windows program.

But there's a problem. It's often difficult to choose just the right font for the job. That's where **FONTER** Version 5.0 comes in. It lets you view any Windows font on the screen, in several ways. Even better, **FONTER** lets you create printed lists of all your fonts, with a text sample of each font. You can also print sample sheets showing your font in all of its variations, and a character set chart which will help you discover just what characters are in every font.

When working with Windows software, it's often easiest to standardize on .BMP files for your clip art needs. Every Windows program can handle these images, and most paint programs, including Windows PaintBrush, included with Windows 3.0, can produce and edit these files.

Unfortunately, it's been impossible to view these files quickly or to print a catalog of your clip art images. Until **WINCLIP** Version 1.2, that is.

WINCLIP allows you to view your .BMP files on screen, and then print a catalog of all your files, or just the ones you select. You can even delete a file you no longer want. **WINCLIP** is so easy to use that you may not need any documentation at all. It uses the standard Windows 3.0 conventions, relying on buttons primarily, rather than menu commands.

As an additional feature, **WINCLIP** allows you to edit your images, using Windows PaintBrush or any other paint program you choose.

BBUG 3140 SPEAKER'S RESOURCE V 1.0

*CLASSIFICATION * Database * Hard Disk * Printer*

SPEAKER'S RESOURCE is for speakers, ministers, teachers and others who want to collect and retrieve stories, quips, jokes and other info. Store textual info then find, view or print by a keyword search. Link PCX graphic to a text record. Many stories included in sample database.

Enter information from keyboard or import from ASCII file. Search, Display and Print entries using keyword or full-text searches that allow multiple AND and OR criteria. Relate text to a PCX graphic or another program. User interface is an easy to learn pull down menu (Windows-Like) interface. Contains example "textbase" containing many "success" and human interest stories.

BBUG 3141 INI-MANAGER Version 2.0

*CLASSIFICATION * Utilities * Windows * Hard Disk*

To handle Windows is much more easier than to work with a DOS shell. But -with the time the Windows user want to know more about the Windows internals. The most

assaulted a superior officer for ordering his soldiers to fire upon civilians. He and his body cast were shipped to Pearl Harbor, while you were transferred to Mars, home of the Union Aerospace Corporation.

The UAC is a multi-planetary conglomerate with radioactive waste facilities on Mars and its two moons, Phobos and Deimos. With no action for fifty million miles, your day consisted of suckin' dust and watchin' restricted flicks in the rec room.

For the last four years the military, UAC's biggest supplier, has used the remote facilities on Phobos and Deimos to conduct various secret projects, including research on inter-dimensional space travel. So far they have been able to open gateways between Phobos and Deimos, throwing a few gadgets into one and watching them come out the other. Recently however, the Gateways have grown dangerously unstable. Military "volunteers" entering them have either disappeared or been stricken with a strange form of insanity—babbling vulgarities, bludgeoning anything that breathes, and finally suffering an untimely death of full-body explosion. Matching heads with torsos to send home to the folks became a full-time job. Latest military reports state that the research is suffering a small set-back, but everything is under control.

A few hours ago, Mars received a garbled message from Phobos. "We require immediate military support. Something fraggin' evil is coming out of the Gateways! Computer systems have gone berserk!" The rest was incoherent.

Soon afterwards, Deimos simply vanished from the sky. Since then, attempts to establish contact with either moon have been unsuccessful.

You and your buddies, the only combat troop for fifty million miles were sent up pronto to Phobos. You were ordered to secure the perimeter of the base while the rest of the team went inside. For several hours, your radio picked up the sounds of combat: guns firing, men yelling orders, screams, bones cracking, then finally, silence. Seems your buddies are dead.

It's Up To You

Things aren't looking too good. You'll never navigate off the planet on your own. Plus, all the heavy weapons have been taken by the assault team leaving you with only a pistol. If only you could get your hands around a plasma rifle or even a shotgun you could take a few down on your way out. Whatever killed your buddies deserves a couple of pellets in the forehead. Securing your helmet, you exit the landing pod. Hopefully you can find more substantial firepower somewhere within the station.

As you walk through the main entrance of the base, you hear animal-like growls echoing throughout the distant corridors. They know you're here. There's no turning back now.

BBUG 9165 DOOM (Disk 2 of 3, also 9164,9166)

BBUG 9166 DOOM (Disk 3 of 3, also 9164,9165)

Continued from page 56

VOLUNTEER REWARDS SCHEME BY-LAWS

(d) No member of the Rewards Committee shall in any way communicate with a nominee to inform him of his nomination.

(e) The Rewards Committee shall present a recommendation for Nominations for a Reward in each month to the President, provided that unsuccessful nominations shall again be eligible for consideration at the next Rewards Committee meeting.

Return of nominations by President:

6. If in the opinion of the President, the nomination of the member has been improperly submitted, or if the President feels further consideration of a nomination should be made, he may return the nomination to the Rewards Committee for further deliberation.

Management Committee Decisions:

7. Final acceptance of a nomination shall be decided by the Management Committee at the monthly committee meeting in the following manner:

(a) The President shall announce to the Management Committee the recommendations of the Rewards Committee and a simple vote of the Management Committee of the Rewards Committee and

a simple vote of the Management Committee shall be taken as to final acceptance of the recommended nomination(s).

(b) The Management Committee shall not approve more than two rewards in any one month. Selection of Reward:

8. The approved nominee(s) shall be advised of their selection to receive a reward by either the President or the Vice President and shall be given the opportunity to personally select his choice of reward from items available.

Presentation of Reward:

9. The reward shall be presented to the successful nominee by the President or the Vice President at the next General Meeting of Brisbug, and shall become the property of the nominee to use or deal with as he thinks fit.

Changes to Rules:

10. These rules may be modified or changed as provided by the By-Laws relating to changes of Brisbug By-Laws. ■

BRISBUG HELP LINES

The following members have generously offered to give telephone assistance on the topics listed. Please be sure to observe the restrictions on times specified by each person. This service is not intended to serve as on-going training or a substitute for reading the manuals, or for

not having manuals. It is for assistance with particular difficulties and for general advice such as when considering becoming involved in that topic.

New offers of help are always welcome, and there are some topics absent from the list.

Subject	Name	Phone	Days & times
4DOS	Chris Raisin	379-1415	Any time
Accounting	Ian Haly	870-1463	After 5:30 & W/Ends
As-Easy-As	Dan Bridges	345-9298	Anytime
	Dan Emerson	288-6070	
AutoCad	Geoff Harrod	378-8534	Evenings, W/E
C++	Geoff Baker	290-0974	6:30-9:00 all week
C language	Danny Thomas	371-7938	Mon-Fri 6pm-9 & W/E
	Ian Haly	870-1463	After 5:30 & W/E
Clarion	Ray Creighton	354-1107	eve & W/E
Clipper	Chris Raisin	379-1415	Evenings
	Don Andersen	881-2432	after 7pm & W/E
	Dan Emerson	288-6070	
	Mike Theocharous	824-1450	Anytime
CodeBase	Ian Haly	870-1463	After 5:30 & W/E
Communications	Ron Lewis	273-8946	8am-8pm
Dataflex	Tony Obermeit	2875534	Mon-Sat A/Hrs & Sun
dBase	Ian Haly	870-1463	After 5:30 & W/E
	Mike Theocharous	824-1450	Anytime
	Sylvia Willie	393-3388	Evenings
	Bob Boon	209-1931	M-F 8am-5pm
	Chris Raisin	379-1415	Any time
	Dan Emerson	288-6070	Evenings
DBXL	Ian Haly	870-1463	After 5:30 & W/E
DisplayWrite 4	Mike Lester	275-1742	(343-5703 a/hrs)
DOS	Ron Lewis	273-8946	8am - 8pm
Forth	Danny Thomas	371-7938	M-F 5-9, W/E
Fortran	Cec Chardon	870-1812	Evenings
	Rob Andamson	266-8353	Evenings
Fox/Fox-Pro	Leon Percy	808-1570	Evenings
Genealogy	Rob Adamson	266-8353	Evenings
	Colin Cunningham	263-3005	9-9 all days
	Bob Gurney	355-4982	Mon-Sat 8-8
Hardware	Chris Ossowski	274-4144	9-9 all days
	Ron Lewis	273-8946	8-8 weekdays
Help!	Dan Bridges	345-9298	Anytime

Meta 5	David Shaw	870-3633	9-9 all days
MS Word	Chris Raisin	379-1415	Any time
Multimate	Frank Mehr	397-3984	Anytime
Multi-user DOS	David Shaw	870-3633	9am-9pm
Novell Netware	Dan Emerson	288-6070	Evenings
Open Access 2	Cec Chardon	870-1812	Evenings
OS/2	Alan Gibson	207-2118	6:30-9:30pm
Paradox 4 Win	Geoff Dancer	294-6976	Evenings
PostScript	Danny Thomas	371-7938	M-F 5-9 & W/E
PowerBase	Mike Lester	275-1742	(343-5703 A/hrs)
Project Manage- ment & planning	Brian Doyle	355-1328	9am - 9pm all days
Quick-BASIC 4.5	Harry Strybos	288-5145	4pm-7pm Weekdays
Quicksilver	Ian Haly	870-1463	M-F after 5:30 & W/E
R-Base	Tony Luck	279-3033	9-9 all days
Spreadsheets	Sylvia Willie	393-3388	Evenings
SQL	Cec Chardon	870-1812	Evenings
System Manager	David Shaw	870-3633	9-9 all days
True-Basic	Bob Gurney	355-4982	Mon-Sat 8-8
Unix	Paul Watts	892-2226	Mon-Sat a/hrs & Sun
Windows	Bernard Speight	349-6677	6pm-9pm
Wordstar (all ver)	Neil McPherson	075-971240	A/hrs
Wordstar-2000/4	Bob Boon	209-1931	Mon-Fri 8-5
Xenix	Paul Watts	892-2226	Mon-Sat a/hrs, Sun
	Mike Lester	275-1742	(343-5703 a/hrs)

MEETINGS

Meetings are held on the 3rd Sunday of every month, except under unusual circumstances, at

QUT KELVINGROVE CAMPUS
Victoria Park Road
Kelvin Grove, Brisbane 10am to 5pm.

Brisbug occupies the main lecture theatre and several other lecture rooms in "B" Block. Please note that other groups are usually using the campus at the same time, and that parking is permitted only in the designated areas. Disabled access is available

Food and refreshments are available 11:30-2:00. Alcohol is not permitted.

Members and visitors must wear an identity badge available from the Membership desk.

Program for Sunday, 20th February, 1994

10:00am CLASSES

Introduction to DOS	John Tacey	R315
BASIC Languages	Rex Ramsey	R309
Hardware	Ron Lewis	Theatre
OS/2	Paul Marwick	R312
DBASE	LeonPercy	R310

10:00 JUNIOR GROUP Les Cathcart R301

12:00 CADDSMAN Demo Theatre

12:15 NEW MEMBERS ORIENTATION R309

1:00 CLUB MEETING Theatre

1:30 COMMUNICATIONS Theatre

3:00 New Users Course Chris Raisin R309

SIGs (Check noticeboard for locations)

URGENT MEMO

From: Computer Hand Holding

To: All Brisbug Members Re: Your Computer Needs.

SYSTEMS

386DX-40 Vesa

212MB Hdd, 4Mb Ram,
1.44Fdd, 512 Vga, Multi I/O,
101 Keyboard, M'Twr,
SVGA Monitor - \$1699

486DX-40 Vesa

212MB Hdd, 4Mb Ram,
1.44Fdd, 512 Vga, Multi I/O,
101 Keyboard, M'Twr,
SVGA Monitor - \$2195

486DX2-66 Vesa

212MB Hdd, 4Mb Ram,
1.44Fdd, 512 Vga, Multi I/O,
101 Keyboard, M'Twr,
SVGA Monitor - \$2585

SPECIALS

MOTHERBOARD UPGRADES

386DX-40V Vesa Local Bus \$250
486DX-40V Vesa Local Bus \$725
486DX2-66V Vesa Local Bus \$1129

CD ROM/SOUND CARDS

P'sonic Dbl Spin & AT I'face \$445
Soung Galaxy BXII Extra \$105
Sound Galaxy NXPro Extra \$195
P'sonic Dbl Spin, NXPro Ext \$581

2nd HAND

150Mb Archive Viper Tape Backup
with Cont, Cable - \$399
Olivetti Laptop 286-16, 40Mb Hdd,
1Mb Ram, Case etc - \$1400

Ph: (07) 3660623

Fax: (07) 3660624

MAESTRO
Modems and
Fax Modems
\$30.00 off!



COMPUTER HAND HOLDING

GO-ON

Pick up your phone
and call us
These specials are
for a limited time only

"SIGNIFICANT BITS" - BACK ISSUES

OUT THEY GO !!!

Brisbug has boxes of old issues of Significant Bits which are taking up much-needed space. I have just spent several happy(?) evenings sorting them out and putting them in order, and for the next 3 months you can order copies of any which are available—after that its off to the recycling bin with the remainder.

Cost

\$1.00 per copy for issues dated before the December 1992/January 1993 issue, and \$3.00 for 1993 issues up to September, 1993.

To Order:

1. Circle the issue(s) you want. If you need more than 1 copy indicate so, e.g. June 26
2. Drop this form in the "Significant Bits" box located in the Software Shop during the November, December, or January meetings, or

Mail the form (no money please!) to me at:

Brian Sanborn
29 Menzies Street
Bethania Q. 4205

3. You may collect and pay for your order at the Software Shop at the next month's meeting.

NOTE: Orders will be filled strictly in the order in which they are received. If stocks of a particular issue run out, that's all there is. The last orders to be accepted must be in my mail box on the Friday before the February meeting. The Monday morning after the February meeting all the remainder will go to the dump.

No phone orders will be accepted.

SIGNIFICANT BITS BACK ISSUES

ORDER FORM

Name.....

(Please Print Clearly)

Number of Copies of Each Issue Held

Please circle any issues you wish to order:

	1993	1992	1991	1990
January	64	56	55	11
February	13	4	6	5
March	15	131	16	5
April	5	106	33	12
May	5	53	40	15
June	-	-	4	49
July	2	1	71	3
August	9	4	27	-
September	19	95	93	35
October	-	66	23	37
November	-	53	59	4
December	-	combined	12	2

Dec92/Jan93 issue:64

No orders will be posted, you must collect and pay for them at the December, January, or February meeting. Any orders remaining to be collected after the February meeting will probably be disposed of 'cause once the Shop stock is loaded in my car for the meetings I seldom have room for anything else.

Ron Lewis Computers

TINY ADS BUT

BIG ON SERVICE

For all your computer needs
ONE STOP SHOPPING

12 Firelight Street,
SUNNYBANK HILLS

PH: (07) 273 8946
FAX: (07) 273 8954

Country enquiries WELCOMED

THE WORLDWIDE STANDARD

"The new speed demon"

—PC Magazine, May 11, 1993

The fastest dBASE ever

Whether you're browsing data, executing queries, creating reports, or running applications, new dBASE IV® version 2.0 gets your job done faster. Everything is 100% compatible with earlier versions of dBASE III PLUS® and dBASE IV, only now it works up to ten times faster. Some tasks are hundreds of times faster—even on networks! It's no wonder that PC Magazine calls new dBASE IV version 2.0 "the new speed demon."

dBASE IV Speed Chart

dBASE IV v2.0

dBASE IV v1.5

dBASE III PLUS

New dBASE IV v2.0 delivers impressive performance gains: It's up to 10 times faster than dBASE IV v1.5 and dBASE III PLUS.

dBASE IV makes it easier

dBASE® is not only fast, it's easy to use. The Control Center organizes and displays all the elements of your database together in one screen.

From there, it's easy to create or use any data table, query, form, report, label, or application.

dBASE IV is built for end users and developers alike.

In fact, a recent usability study* proves that for everyday

tasks, users get their work done 25% faster with dBASE IV v2.0 than with FoxPro v2.5.

New! dBASE Compiler

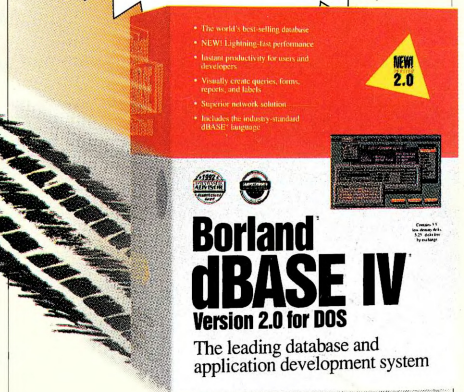
The new dBASE Compiler for DOS† is the only compiler 100% compatible with the industry standard dBASE language. Compile and run your existing dBASE III®, dBASE III PLUS, and dBASE IV applications without modification. And generate high-performance, fully functional .EXEs with no royalty fees or runtime modules.

Catch up with the new speed demons. Get new dBASE IV v2.0 and the dBASE Compiler today!

Upgrade today!

\$195

(From any previous version of dBASE)



Call Borland Customer Service
(02) 911-1033

Borland

Power made easy